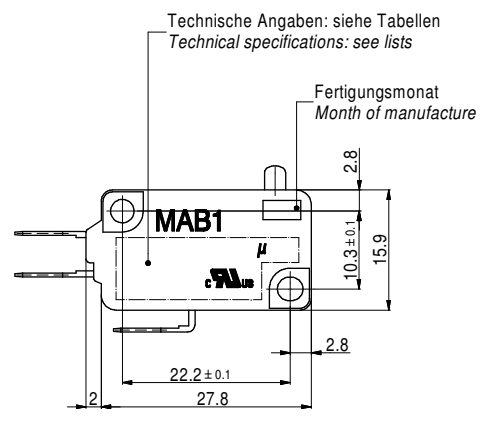
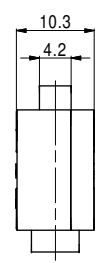
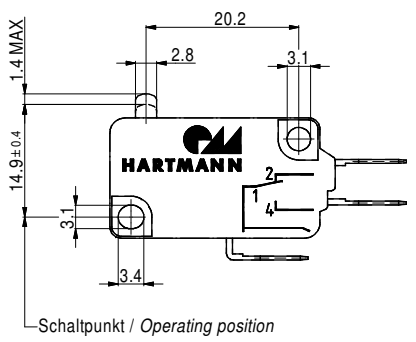
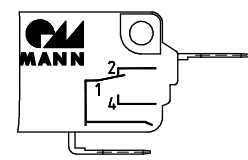


4 3 2 1

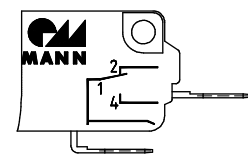


Kontaktanordnung / Contact arrangement

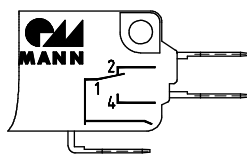
Öffner / Normally closed



Schließer / Normally open

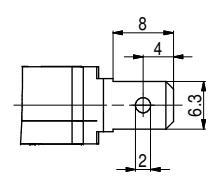
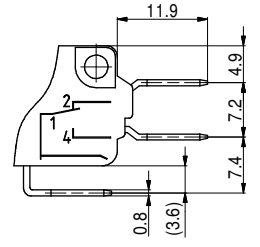


Wechsler / Change over

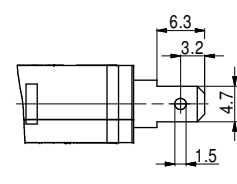
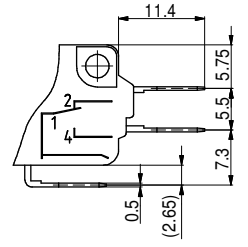


Anschlüsse / Terminals

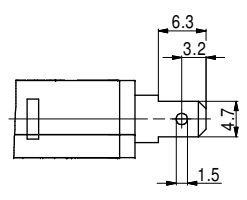
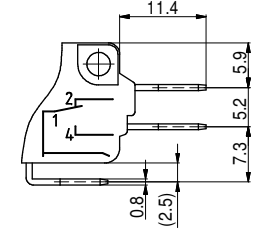
Steckanschluss 0.8x6.3
Plug connection 0.8x6.3



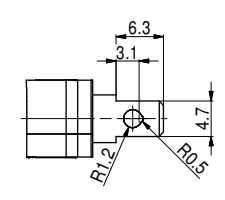
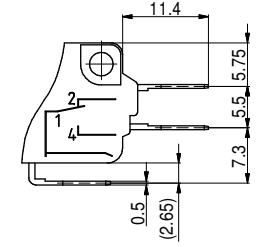
Steckanschluss 0.5x4.7
Plug connection 0.5x4.7



Steckanschluss 0.8x4.7
Plug connection 0.8x4.7



Steck-/Lötanschluss 0.5x4.7
Plug/solder terminal 0.5x4.7

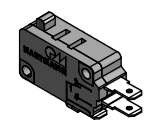


Schaltleistung nach UL 61058-1 / Rating according to UL 61058-1

Schaltleistung Rating	Widerstandslast Resistor load	Leistung hp
1(0.3)A 125/250VAC	---	---
5(2)A 125/250VAC	4A 30VDC	---
10(3)A 125/250VAC	6A 30VDC	---
16(4)A 125/250VAC	10A 30VDC	1/3hp 125VAC
21(4)A 125/250VAC	12A 30VDC	1hp 125VAC / 2hp 250VAC
25(10)A 125/250VAC	25A 125/250V	1hp 125VAC / 2hp 250VAC

Allgemeine technische Daten / General specifications

Mech. Lebensdauer (Schaltungen)	Mechanical lifetime (actuators)	min. 2x10 ⁶
Elektr. Lebensdauer je nach Schaltleistung (Schaltungen)	Electrical lifetime depending on switching power (actuators)	≤ 10T105: min. 50.000 10T125: min. 10.000
Vorlaufweg	Pretravel	max. 1.4mm
Differenzweg	Movement differential	max. 0.4mm
Nachlaufweg	Overtravel	min. 1.0mm
Kontaktöffnungsweite	Contact opening	< 3mm (μ)
Isolationswiderstand	Insulation resistance	≥ 100MQ (500VDC)
Durchgangswiderstand	Contact resistance	max. 50mΩ
Prüfspannung	Test voltage	AC1000V/2000V
Prüfzeichen	Approvals	: MAB1 01..... - MAB1 04.....



Artikel-Nr. Part no.	Bezeichnung Title	Schaltleistung Rating	Betätigungskraft Operating force	Umgebungstemp. Ambient temp.	Kontaktanordnung Contact arrangement	Anschlüsse Terminals	Maße Dimensions	Bemerkung Note
61-263000...	MAB1 04G01C01X01A	16(4)A 250VAC	max. 3.5N	10T105	Wechsler / Change over	Steckanschl. / Plug con.	0.8x6.3	ähnlich / similar to 53-261006
61-263000...	MAB1 04G01B01X01A	16(4)A 250VAC	max. 3.5N	10T105	Schließer / Normally open	Steckanschl. / Plug con.	0.8x6.3	ähnlich / similar to 53-261006
61-263000172	MAB1 01A01B01X03A	1(0.3)A 250VAC	max. 0.8N	10T105	Schließer / Normally open	Steckanschl. / Plug con.	0.8x4.7	
61-263000162	MAB1 06A01C01X01A	1(0.3)A 250VAC	max. 0.8N	10T105	Wechsler / Change over	Steckanschl. / Plug con.	0.8x6.3	vergoldet / gold plated
61-263000128	MAB1 04A01C01X01A	16(4)A 250VAC	max. 0.8N	10T105	Wechsler / Change over	Steckanschl. / Plug con.	0.8x6.3	

Verwendungsbereich/Application Entwurf / Draft	Oberfläche/Surface	Maßstab/Scale 2 : 1	
		Werkstoff Material	Gewicht/Weight
	Datum/Date 16.11.2015	Name Ropinski	Benennung / Title MAB1 mit Stößel und Standard-Gehäuse MAB1 with plunger and standard housing
	gez./Drawn		Zeichnungsnummer / Drawing no. SK 4271 Entwurf / Draft
	gepr./Checked		
Zust. Index	Änderungen/Corrections	Datum/Date	Name
			Blatt Page 1 v. 1
Ers. 1. / repl. 1.			A2

Schutzvermerk nach ISO 16016 beachten / All rights reserved acc. ISO 16016