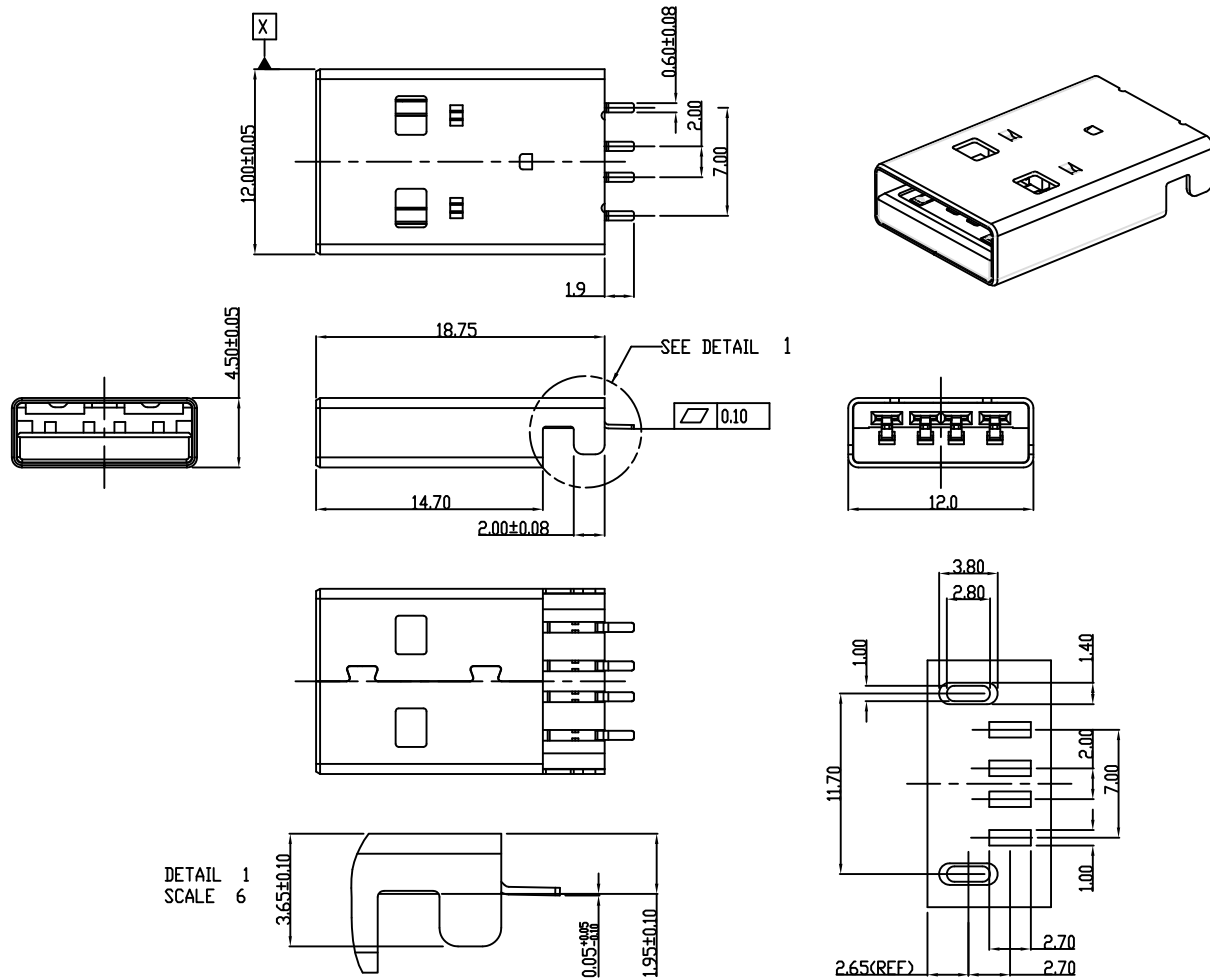


1	2	3	4	5	6	7	8	9	10
SWITCH CIRCUIT			MATERIAL AND FINISH AS BELOW						
WHEN CARD IS EJECTED		WHEN CARD IS INSERTED		A	Housing	LCP UL94V-0 Black	E		
				B	Contact	Brass C2680, Contact Area: 30u" Gold Plating	F		
				C	Shell	SPCC, Nickel Plating	G		
				D			H		



### SPECIFICATION:

#### 1. ELECTRICAL

- 1.1 Current Rating: 1.5A
- 1.2 Voltage Rating: 30VDC
- 1.3 Contact Resistance: 50mΩ
- 1.4 Insulation Resistance: 1000MΩ
- 1.5 Dielectric Withstanding Voltage: 500VAC

#### 2. MECHANICAL

- 2.1 Durability: 5000 cycle
- 2.2 Insertion Force: 35max.
- 2.3 Extraction Force: 10min.

#### 3. ENVIRONMENTAL

- 3.1 Operating temperature range: -40°C~+85°C
- 3.2 Storage temperature range: -40°C~+85°C

#### 4. SOLDER ABILITY

- 4.1 Recommended IR Reflow Temperature: 260°C

P1	P2	P3	P4	P5	P6	P7	P8	P9	P10	P11	P12
----	----	----	----	----	----	----	----	----	-----	-----	-----

#### PIN ASSIGNMENT

205A-SGN0-R08	USB A Plug SMD Type, Contact Area: 30u" Gold Plating
---------------	--

PRODUCT NO.	DESCRIPTION
-------------	-------------

UNLESS OTHERWISE SPECIFIED TOLERANCE

ANGLES	ANG.	±5°
	0.	±0.3
LINEAR	0.0	±0.25
	0.00	±0.20

SCALE AS SHOWN UNIT: mm

DRAWN Willis 2013/08/13

CHECKED Angel 2013/08/13

APPROVED Ken 2013/08/13



www.attend.com.tw

DRAWN NAME: USB A Plug SMD Type

PRODUCT NO. 205A-SGN0-R08

FILE NAME 205A-SGN0-R08\_B\_1

3	Revise:										
3	Revise:										
3	Revise:										
REV.	DESCRIPTION	DATE	REV.	DESCRIPTION	DATE	SIZE	REV.	FILE NAME	DESCRIPTION	DATE	REV.
1						A4	1.0				