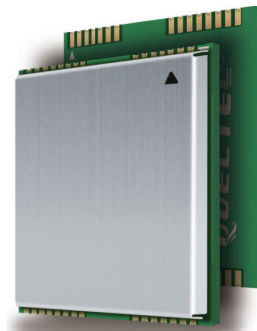


QUECTEL

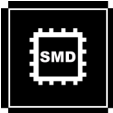
Wireless Module Expert

M75

Dual-Band GSM Module



Dual Band



SMD Type



RoHS Compliant



Serial Port
Multiplexer (GSM0710)



Quectel Enhanced AT
Commands

The M75 is a very simple dual-band GSM module only supporting **SMS**, which is the only module of its type available in the world. Featuring SMD type, full shielding, extremely low power consumption, it brings the benefits of simplicity, robustness and extremely low cost to customer's application.

The M75 is an excellent choice for applications only requesting SMS function. They can be Remote Controlling, Security, Smart Metering and etc.

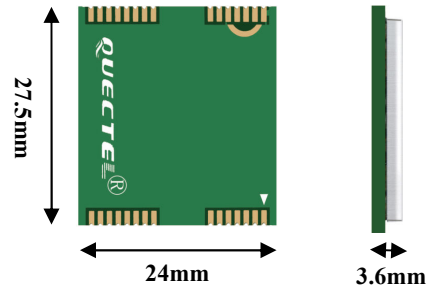
- Dual-band GSM module
- Extremely tiny size 27.5mmx24mmx3.6mm
- SMD type for easy SMT production
- Support SMS service
- Not support analog voice connection

M75

Dual-Band GSM Module

General Features

Dual-Band	900/1800 MHz
Compliant to GSM Phase 2/2+	Class 4 (2W @ 900 MHz) Class 1 (1W @ 1800 MHz)
Supply Voltage Range	3.3~4.6 V 4.0V nominal
Low Power Consumption	0.9mA @ DRX=5 0.7mA @ DRX=9
Operation Temperature	-40 °C to +80°C
Dimensions	27.5mm×24mm×3.6mm
Weight	Approx. 4.5g
Control via AT commands (GSM 07.07, 07.05 and other enhanced AT Commands)	



Specifications for SMS via GSM

Point-to-point MO and MT

SMS Cell Broadcast

Text and PDU Mode

Interfaces

External SIM 3V/ 1.8V

RTC Backup

Serial Port and Debug Port

Antenna Pad

Contact Us

Address Room 501, Building 13, No.99 Tianzhou Road, Shanghai, China

Email info@quectel.com

Tel +86 21 51086236

