



Fanless Panel PC Assembly Guide

8.4"

Contents

Chapter 1 Fanless Panel PC Assembly Steps 1

Chapter 2 Assembly Guide for
Waterproof Gasket of Panel PC 4

Chapter 3 PANEL PC- Panel Mounting Kit 5

Chapter 4 8.4" LCD Panel PC Exploded Drawing 6



Chapter 1 Fanless Panel PC Assembly Steps

8.4" Series (FOR 2.5"HDD)

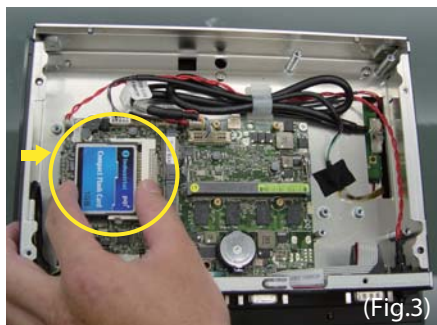


(Fig.1)



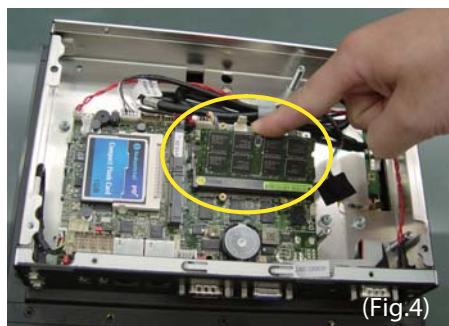
(Fig.2)

1. Unscrew the 8 flat-headed M3*4 screws on the bottom cover of the chassis, and then remove the bottom cover. (Fig.1) (Fig.2)



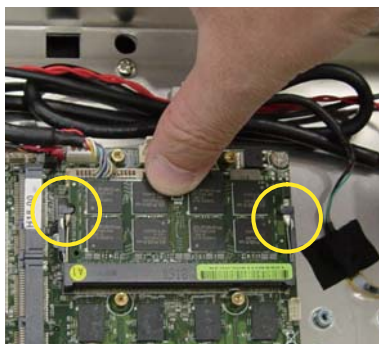
(Fig.3)

2. Install the CF card by pushing it forward from the outside. (Fig.3)



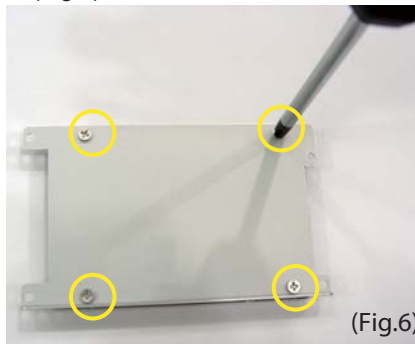
(Fig.4)

3. Install the DDRII SDRAM module into the SODIMM socket from the 45 degree angle. (Fig.4)



(Fig.5)

4. Press the SDRAM module down to be connected with the socket. (Fig.5)



(Fig.6)

5. Screw the HDD to the HDD kit with four flat-headed M3*4 screws meanwhile notice the direction of HDD. (Fig.6)



(Fig.7)

6. Connect the SATA Cable to HDD. (Fig.7)



(Fig.8)

7. Connect the SATA Power Cable to HDD. (Fig.8)



(Fig.9)

8. Plug the SATA Cable into the SATA socket on the Mainboard. (Fig.9)

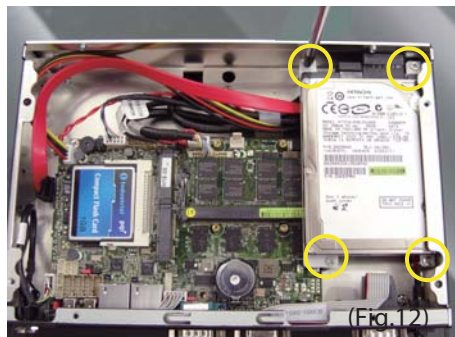


(Fig.10)

9. Plug the SATA Power Cable into the SATA socket on the Mainboard. (Fig.10)



(Fig.11)



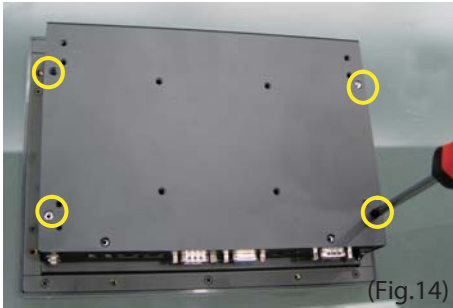
(Fig.12)

10. Screw the HDD Kit to the system with four flat-headed M3*4 screws. (Fig.11) (Fig.12)



(Fig.13)

11. Attach the thermal pad on the HDD and avoid the heat-dissipating holes at the same time. (Fig.13)



(Fig.14)



(Fig.15)

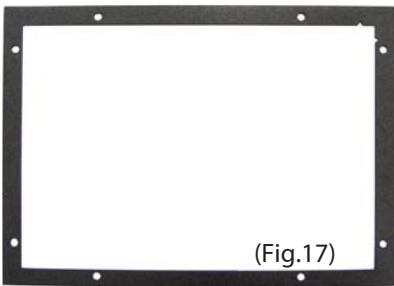
12. Screw the top cover to the system with ten black flat-headed M3*4 screws. (Fig.14) (Fig.15)

Chapter 2 Assembly Guide for Waterproof Gasket of Panel PC



(Fig.16)

1. Turn over the Panel PC to the back as shown in the picture below. (Fig.16)

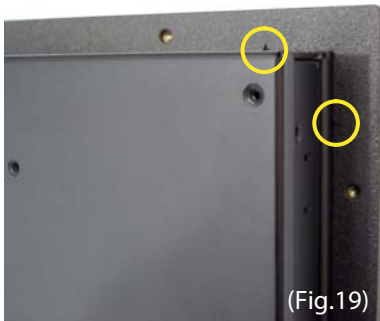


(Fig.17)



(Fig.18)

2. Tear-open the waterproof gasket. (Fig.17) (Fig.18)



(Fig.19)



(Fig.19)

3. Gently apply the gasket to the back of the Panel PC. Be aware of the two triangle shapes (shown in the picture) has to be taped on the upper right side of the Panel PC. (Fig.19)

Chapter 3 PANEL PC- Panel Mounting Kit



(Fig.20)



1. Press the Panel Mounting Kit down to the system screw holes. (Totally four kits) (Fig.20)



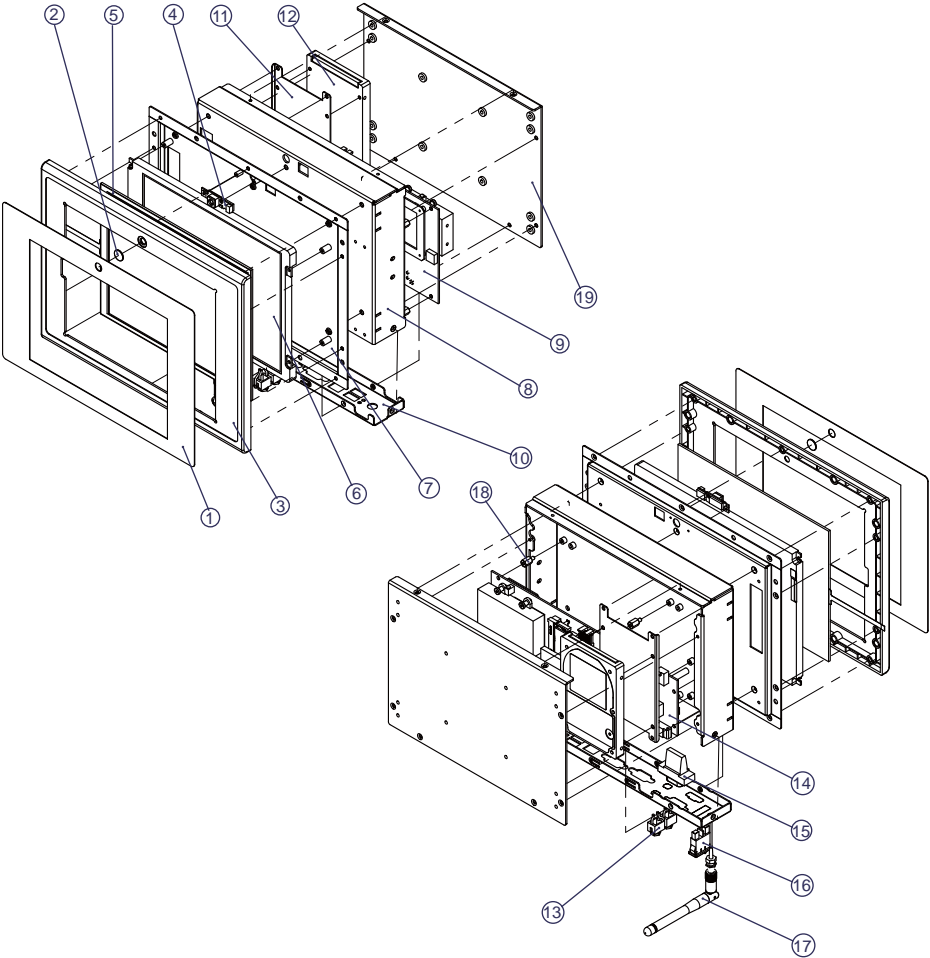
(Fig.20)



(Fig.21)

2. Tightly screw the Panel Mounting Kit screws. (Fig.21)

Chapter 4 8.4 " LED Panel PC Exploded Drawing



- | | | |
|----------------------|-----------------|----------------|
| 1. Nameplate | 8. Chassis Box | 15. COM Port |
| 2. Camera plate | 9. Main Board | 16. Switch |
| 3. 8.4" Front Panel | 10. Back Panel | 17. Antenna |
| 4. Camera | 11. HDD Bracket | 18. Hexagon |
| 5. 8.4" Touch Screen | 12. 2.5"HDD | 19. Back Cover |
| 6. 8.4" LCD Panel | 13. Audio | |
| 7. Chassis | 14. PW010 | |

An 8.4 inch fanless panel PC is shown at an angle, displaying a blue and white abstract graphic on its screen. The device is black with a silver bezel. It is positioned on a blue grid pattern that recedes into the distance.

8.4" Fanless Panel PC Assembly Guide

Release date: JAN.2011

6G8611-2202-0100