

2J7515B-433

433 MHz ISM Screw Mount

Key Features

433 MHz ISM

- 433-435 MHz

Screw Mount

High Performance

Ground Plane Dependent

Customizable Cable and Connector

Dimensions \varnothing 64 x 81.4 mm

Certificates IP67, IP69



1. Antenna and electrical specifications

Parameters	433 MHz ISM Antenna
Standards	ISM
Band (MHz)	433 MHz
Frequency (MHz)	433-435
Return Loss (dB)	~-16.3
VSWR	~1.4:1
Efficiency (%)	~41.9
Peak Gain (dBi)	~1.1
Average Gain (dB)	~-3.8
Impedance (Ohm)	50
Polarisation	Linear
Radiation Pattern	Omni-Directional
Max. Input Power (W)	25
Connector Type	SMA-Male Standard (Other Connectors Available)
Cable Length	300 cm Standard (Any Cable Length Available)
Cable Type	LL100 Standard (Other Cables Available)

Antenna Measurement Conditions:

Mounted on 30 x 30 cm Metal Plate

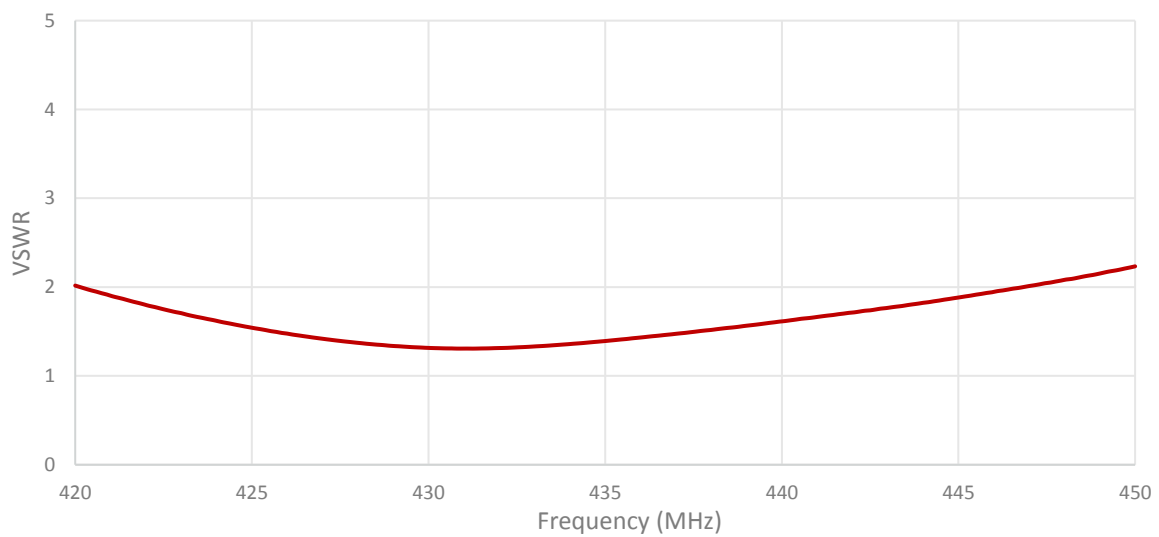
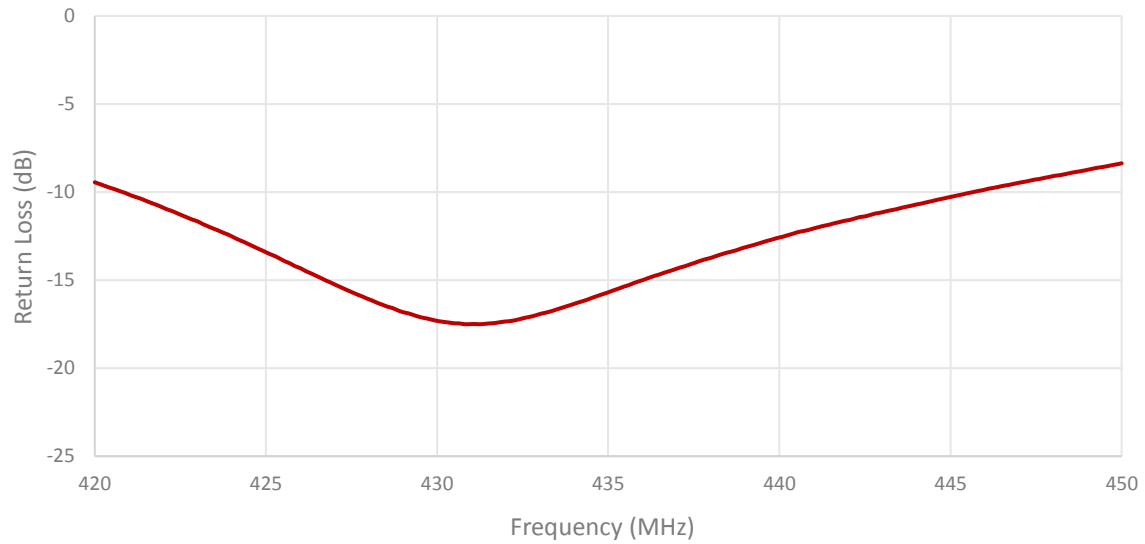
200 cm of LL100

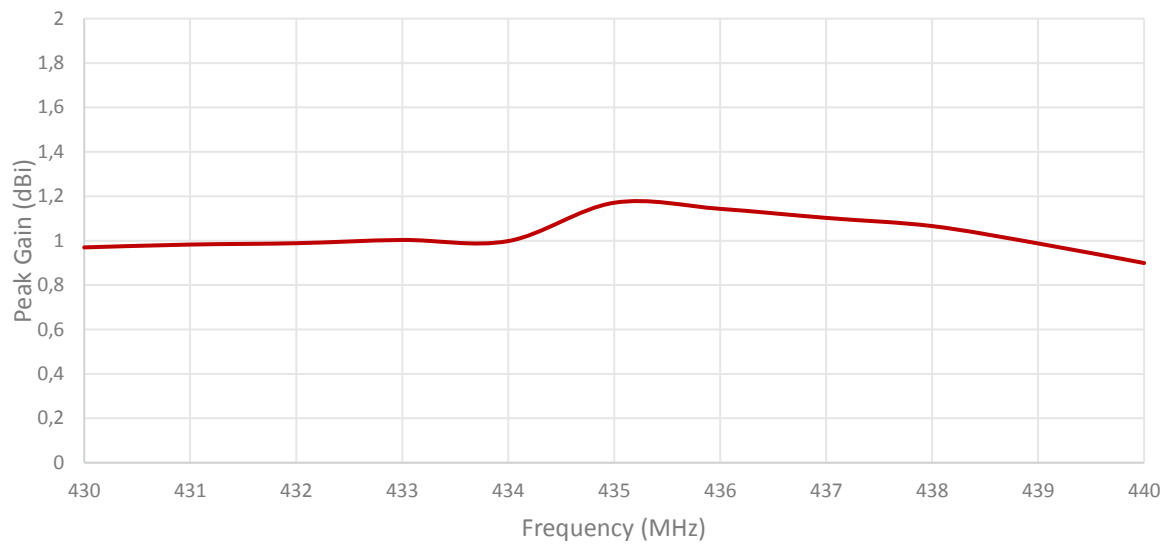
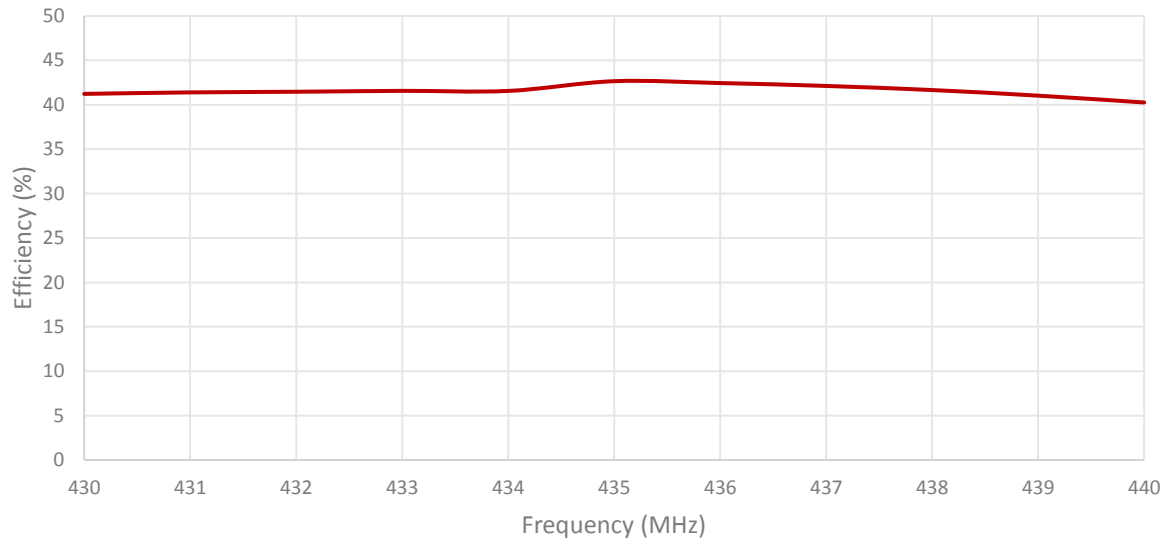
Measured in Certified CTIA 3D Anechoic Chamber

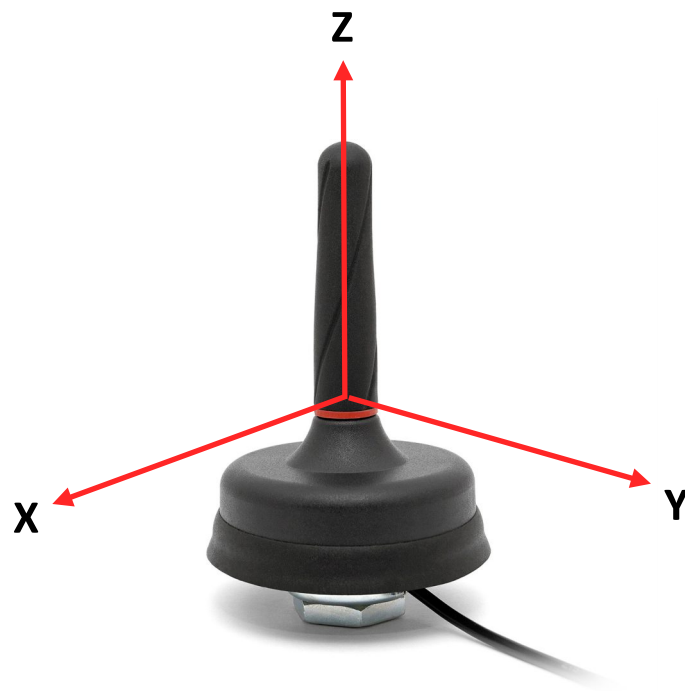
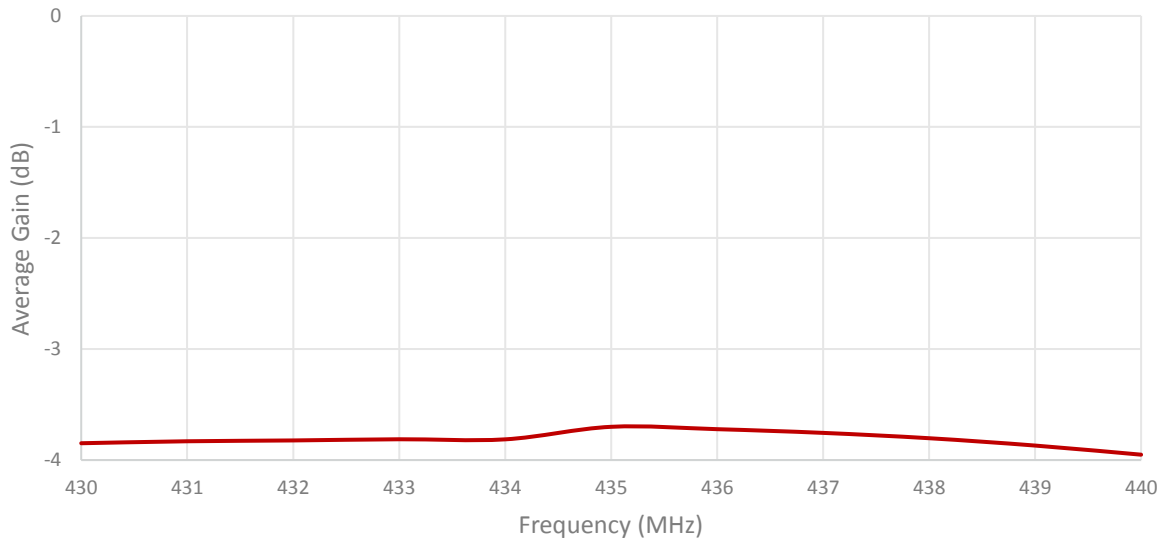
2. Mechanical and environmental specifications

Specifications	2J7515B-433
Mounting Type	Screw Mount
Dimensions (mm)	Ø 64 × 81.4
Rec. Tighten Torque (Nm)	6 Nm
Radome	ASA
Radome color	Black
Antenna Base	Zamak
Gasket	TPE
Operating Temperature (C)	-40 to +85
Storage Temperature (C)	-40 to +85
Substance Compliance	RoHS
Certificates	IP67, IP69

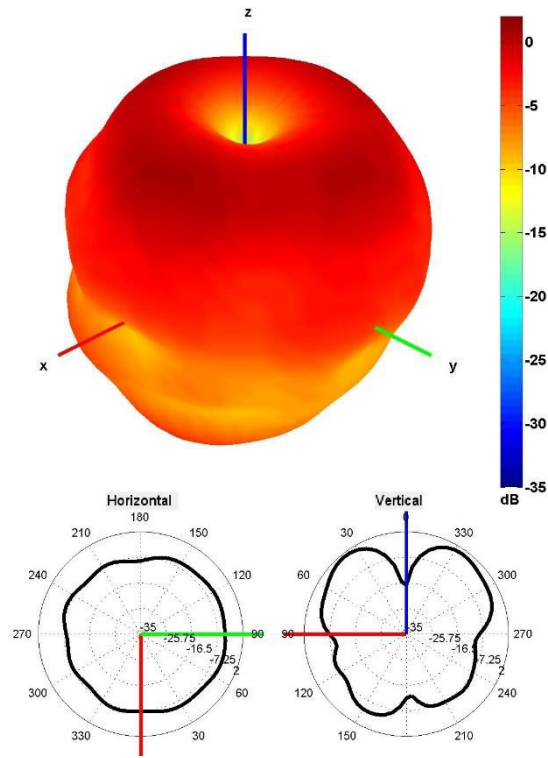
3. Antenna parameters





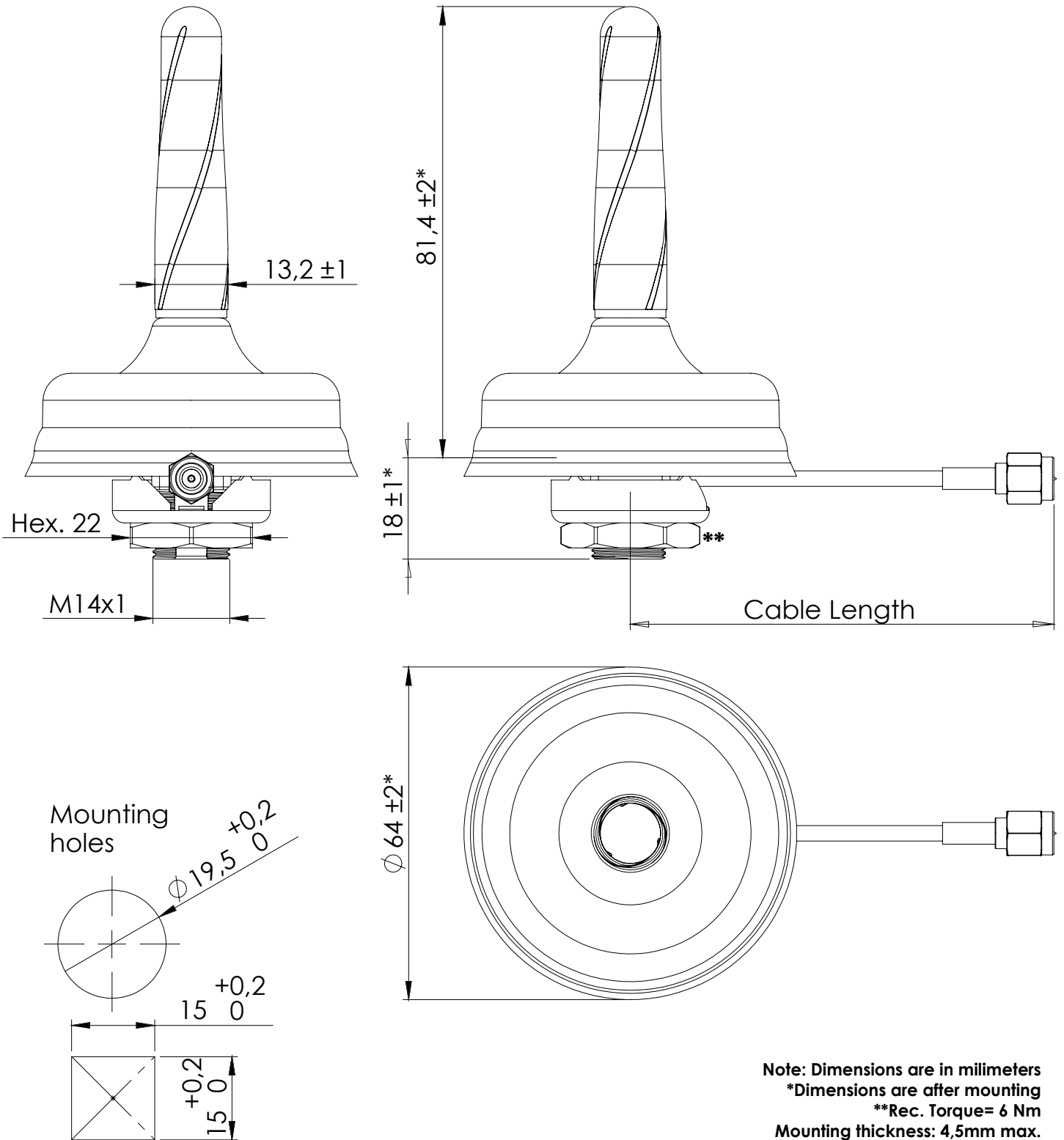


Radiation pattern reference



433 MHz Radiation pattern

4. Antenna drawings



Note: Dimensions are in millimeters
 *Dimensions are after mounting
 **Rec. Torque= 6 Nm
 Mounting thickness: 4,5mm max.
 Wrench size: Hex 22mm

5. Antenna Images

