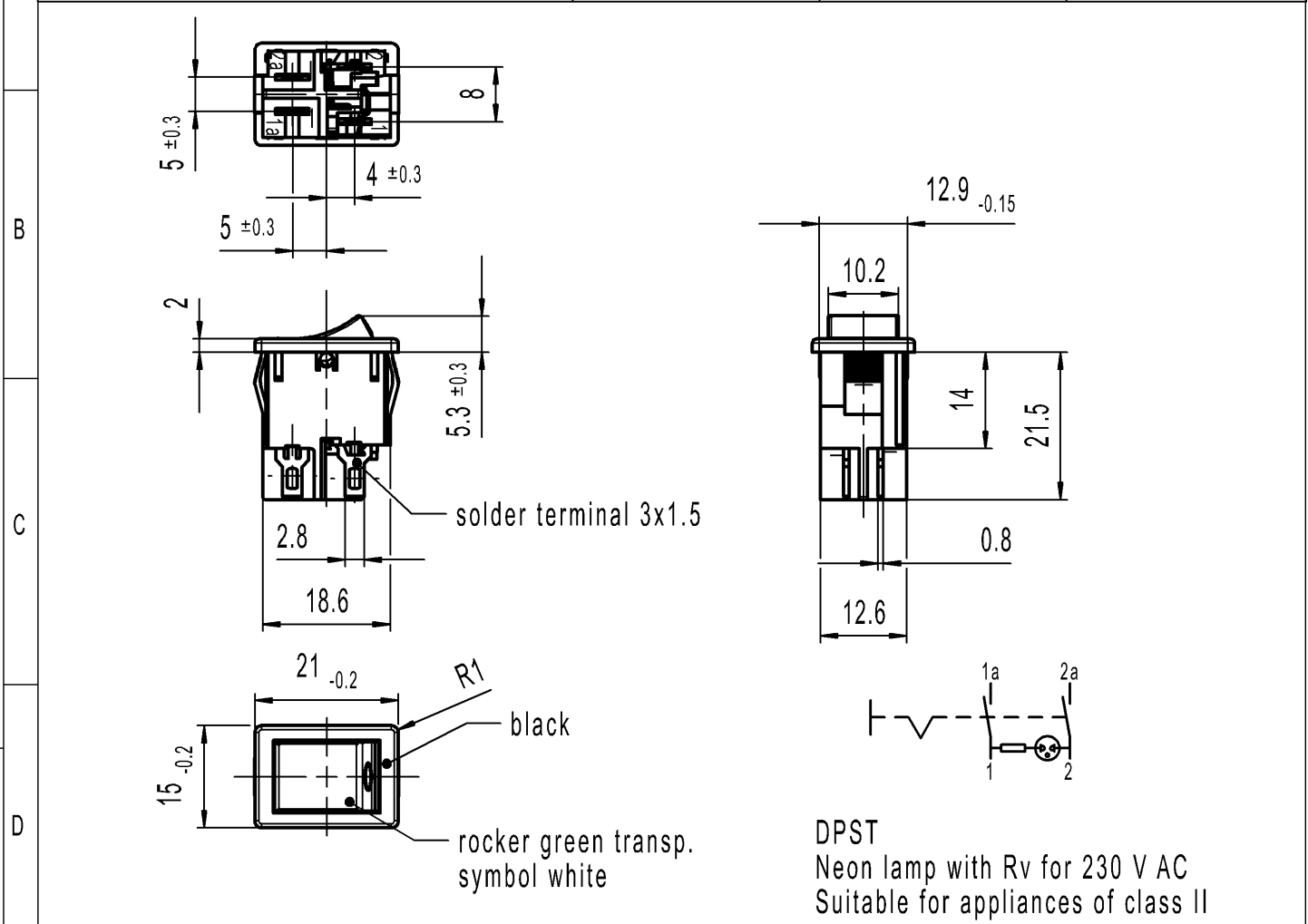


CONFIDENTIAL

VERTRAULICH

THIS DRAWING IS THE EXCLUSIVE PROPERTY OF MARQUARDT. WITHOUT THEIR CONSENT IT MAY NOT BE REPRODUCED OR GIVEN TO THIRD PARTIES.

A	recommended cut-out for snap-in fixing (edge opposite to snap-in direction)	1	2	3	4
			wall thickness	length of cut-out	width of cut-out
			0.75 to 1.25	19.2 -0.1	12.9+0.1
			1.25 to 2	19.4 -0.1	12.9+0.1
		2 to 3	19.8 -0.1	12.9+0.1	



DPST
Neon lamp with Rv for 230 V AC
Suitable for appliances of class II

Marking

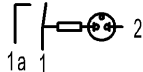


1855.

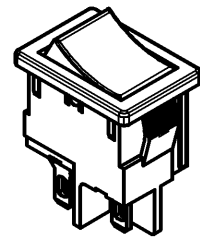
4(1)/250~T85/55

4A 250V AC
1/10 HP

R69



Code of manufacture: place/year/month



Alle Rechte bei Marquardt, auch fuer den Fall von Schutzrechtsanmeldungen. Jede Veruegungsbefugnis, wie Kopier- und Weitergaberecht, bei uns.

-	-	-	1855.0108-XX
Figure	Type	Customer Part No.	Art.No.-PI
Shape and location	Angle ± 2 °	Sheet 01	Ident. K
	Edge tolerance	Format DIN A4	Document number 18550108
	Length	Projection	Index g
	Radii	Scale 1:1	Appliance Switch
		All dimensions are in millimetres	
g	141197	2023-01-03	 MARQUARDT
f	66876	2010-01-20	
e	63303	2009-05-07	
d	27320	2001-02-01	
Index	MEC-No.	Date (YYYY-MM-DD)	
			System NX V1899
			Replacement of
			Zg.gl.Nr.v.29.06.1993