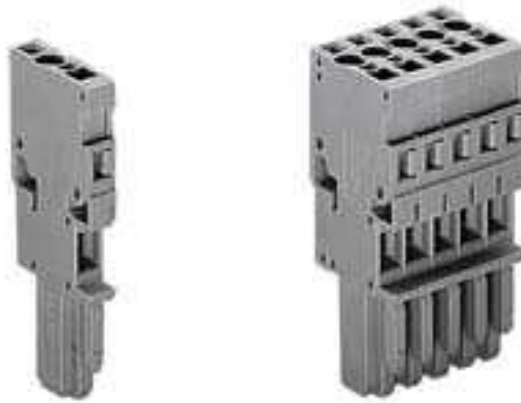


Data sheet

769-108

**1-CONDUCTOR FEMALE PLUG TO BE FIXED ON RECEPTACLE TERMINAL BLOCKS OR MALE CONNECTORS
COMMONING POSSIBILITY WITH MINIATURE ADJACENT JUMPERS WITH CODIG FINGERS CAGE CLAMP CONNECTION**



Technical data

Package size 50 pieces.

| | |
|---------------------------------------|----------------------|
| pole count | 8 |
| Cross section from [mm ²] | 0.08 mm ² |
| Cross section to [mm ²] | 2.5 mm ² |
| Cross section from [AWG] | 28 AWG |
| Cross section to [AWG] | 14 AWG |
| Voltage UL | 300/600 V |
| Voltage CSA | 300 V |
| Current UL | 10/5 A |
| Current CSA | 10 A |
| Cross section from [mm ²] | 0.08 mm ² |
| Cross section to [mm ²] | 4 mm ² |
| Cross section from [AWG] | 28 AWG |
| Cross section to [AWG] | 12 AWG |
| Wiring method | e |
| Measured voltage EN | 500 V |
| Measured shock voltage | 6 kV |
| Pollution degree | 3 |
| Current intensity EN | 16 A |
| Weight | 27.321 g |
| Color | grey |
| Wiring type | Front-entry |
| No. of connection Points | 8 |
| No. of potentials | 8 |

Data sheet**769-108****1-CONDUCTOR FEMALE PLUG TO BE FIXED ON RECEPTACLE TERMINAL
BLOCKS OR MALE CONNECTORS
COMMONING POSSIBILITY WITH MINIATURE ADJACENT JUMPERS WITH CODIG
FINGERS CAGE CLAMP CONNECTION**

| | |
|-------------------|----------|
| Height | 45.2 mm |
| Height | 1.78 in |
| Width | 40 mm |
| Width | 1.575 in |
| Depth | 18.3 mm |
| Depth | 0.72 in |
| Strip length from | 8 mm |
| Strip length to | 9 mm |
| Strip length | 0.33 in |

Data sheet

769-108

**1-CONDUCTOR FEMALE PLUG TO BE FIXED ON RECEPTACLE TERMINAL
BLOCKS OR MALE CONNECTORS
COMMONING POSSIBILITY WITH MINIATURE ADJACENT JUMPERS WITH CODIG
FINGERS CAGE CLAMP CONNECTION**

| Approval | Voltage | Current | Approval number | Notes |
|----------|---------|---------|-----------------|-------|
| BBJ | 500 | 16 | B/12/695/03 | |
| CCA | 500 | 32 | NL5642 | |
| CSA | 300 | 10 | 154112-1466219 | |
| KEMA | 500 | 32 | 2077750.01 | |
| UL | 600 | 20 | E45171 | |
| UL | 300/600 | 10/5 | E45172 | |

Data sheet

769-108

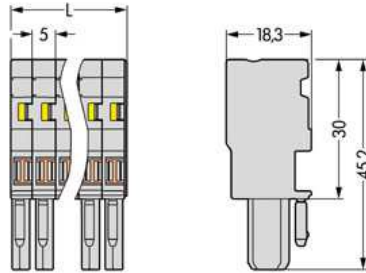
**1-CONDUCTOR FEMALE PLUG TO BE FIXED ON RECEPTACLE TERMINAL BLOCKS OR MALE CONNECTORS
COMMONING POSSIBILITY WITH MINIATURE ADJACENT JUMPERS WITH CODIG FINGERS CAGE CLAMP CONNECTION**

| Accessories | Item number |
|---|----------------------------|
| 1-CONDUCTOR FEMALE PLUG TO BE FIXED ON RECEPTACLE TERMINAL BLOCKS OR MALE CONNECTORS | 769-101 |
| CARRIER FOR SPARE ADJACENT JUMPERS SUITABLE FOR ADJACENT JUMPER SERIES 279-284, BANANENSTECKER SERIES 215 | 209-100 |
| CODING PIN FOR CODING OF FEMALE PLUGS | 769-435 |
| Individual wire jumpers | individual jumper |
| INSULATION STOP 0.08 - 0.2 MM ² | 769-470 |
| INSULATION STOP 0.25 - 0.5 MM ² | 769-471 |
| INSULATION STOP 0.25 - 0.5 MM ² | 769-472 |
| LOCKING LEVER CAN BE SNAPPED ON 1=CONDUCTOR FEMALE PLUGS | 769-428 |
| LOCKING LEVER CAN BE SNAPPED ON 1=CONDUCTOR FEMALE PLUGS | 769-429 |
| LOCKING LEVER CAN BE SNAPPED ON 1=CONDUCTOR FEMALE PLUGS | 769-430 |
| LOCKING LEVER CAN BE SNAPPED ON 1=CONDUCTOR FEMALE PLUGS | 769-431 |
| MINIATURE ADJACENT JUMPER SUITABLE FOR 1-CONDUCTOR FEMALE PLUGS | 769-402 |
| MINIATURE WSB QUICK MARKING SYSTEM PLAIN | 248-501 |
| MINIATURE WSB QUICK MARKING SYSTEM PLAIN | 248-501/000-002 |
| MINIATURE WSB QUICK MARKING SYSTEM PLAIN | 248-501/000-005 |
| MINIATURE WSB QUICK MARKING SYSTEM PLAIN | 248-501/000-006 |
| MINIATURE WSB QUICK MARKING SYSTEM PLAIN | 248-501/000-007 |
| MINIATURE WSB QUICK MARKING SYSTEM PLAIN | 248-501/000-012 |
| MINIATURE WSB QUICK MARKING SYSTEM PLAIN | 248-501/000-017 |
| MINIATURE WSB QUICK MARKING SYSTEM PLAIN | 248-501/000-023 |
| MINIATURE WSB QUICK MARKING SYSTEM PLAIN | 248-501/000-024 |
| Open individual wire jumpers ends | individual jumper open end |
| OPERATING LEVER LOOSE | 769-434 |
| PROTECTIVE WARNING MARKER WITH HIGH VOLTAGE SYMBOL, BLACK | 280-415 |
| SCREWDRIVER Type 2, bar (3,5 x 0,5) mm | 210-120 |
| SCREWDRIVER WITH PARTIALLY INSULATED SHAFT Type 2, bar (3,5 x 0,5) mm | 210-620 |
| STRAIN RELIEF PLATE SNAP-ON TYPE FOR 1-CONDUCTOR FEMALE PLUGS | 769-413 |
| TEST PLUG 2 MM / 0.079 IN WIDE | 210-136 |
| TEST PLUG 2.3 MM / 0.091 IN WIDE | 210-137 |

Data sheet

769-108

**1-CONDUCTOR FEMALE PLUG TO BE FIXED ON RECEPTACLE TERMINAL BLOCKS OR MALE CONNECTORS
COMMONING POSSIBILITY WITH MINIATURE ADJACENT JUMPERS WITH CODIG
FINGERS CAGE CLAMP CONNECTION**



Data sheet

769-108

**1-CONDUCTOR FEMALE PLUG TO BE FIXED ON RECEPTACLE TERMINAL
BLOCKS OR MALE CONNECTORS
COMMONING POSSIBILITY WITH MINIATURE ADJACENT JUMPERS WITH CODIG
FINGERS CAGE CLAMP CONNECTION**

L = No.of poles x module width