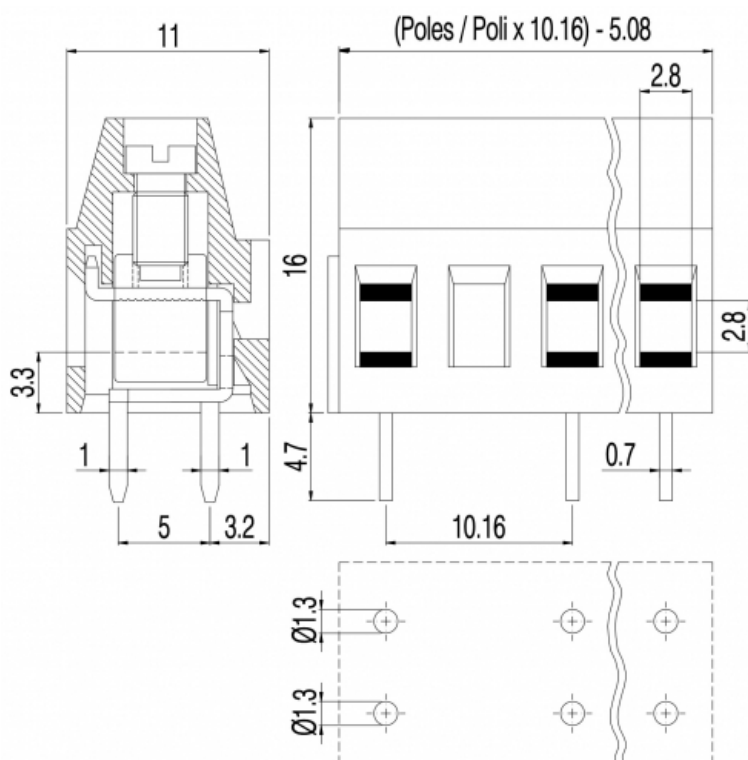


MV25Dx-10,16-V



Single-deck terminal block - Double pin - Modular version - Pitch 10,16mm - 1/2/4 poles

GENERAL INFORMATION

pitch:	10,16 mm
housing height:	16,00 mm
housing depth:	11 mm
dimensional class:	medium
wire section:	2.5 mm ² / 14 AWG
clamp opening size:	2.8 x 2.8 mm
wire stripping:	max 8 mm
operating temperature:	-40°C ÷ +130°C

ELECTRICAL CHARACTERISTICS

current:	24A
voltage:	750V
test voltage:	3 kVrms/60s

MECHANICAL CHARACTERISTICS

screw:	M3
max. torque:	0.8 Nm / 7.2 in.lbs

APPROVALS DATA



EN 60998-1

current:	24A
voltage:	750V
wire section:	2.5mm ²
torque:	0.8Nm

FILE: CA02.00599





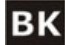



-
-
-
-
-



UL 1059
18A factory / 15A field
300V
14÷30AWG
4.5Lb-in
E178356

MATERIALS

AVAILABLE COLOURS

housing: PA - UL 94 V0  (STD)     

screw: Galvanized steel

clamp/spring: Nickeled copper alloy other colours: upon request

terminal: Tin-plated copper alloy

poles	P/N	pcs/pack	W [Kg]*	W [Kg]*
1	MV25D1-10,16-V	N/A	N/A	N/A
2	MV25D2-10,16-V	N/A	N/A	N/A
4	MV25D4-10,16-V	N/A	N/A	N/A
..	MV25D..-10,16-V	N/A	N/A	N/A