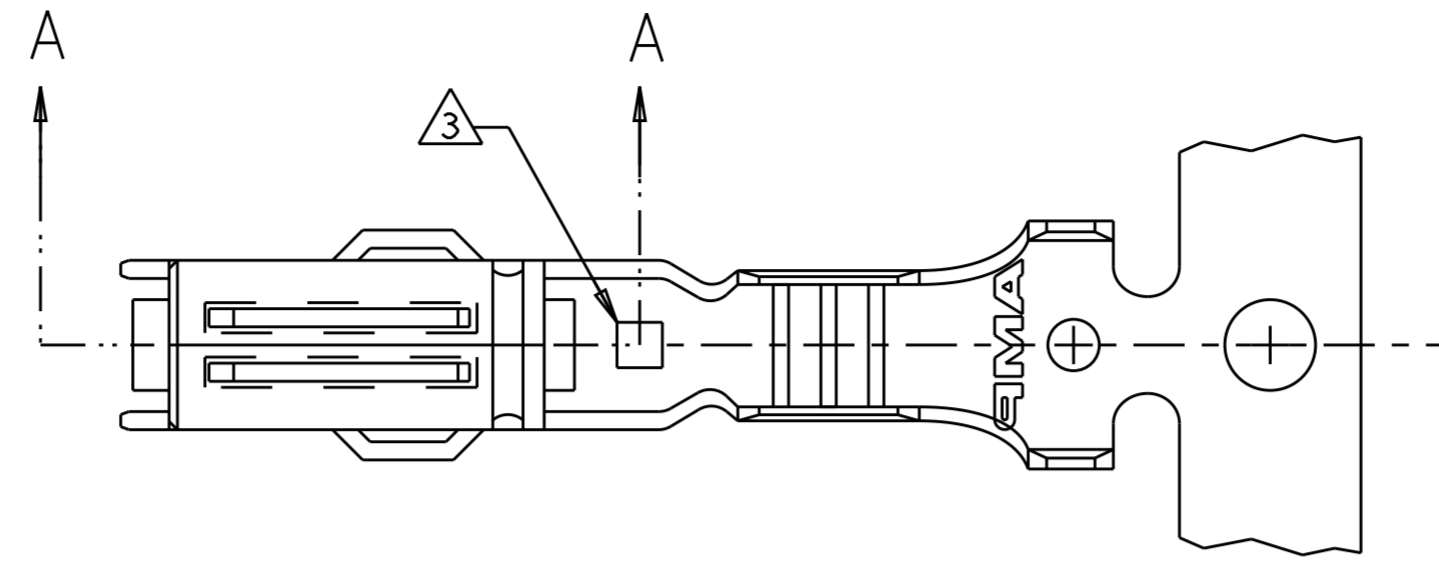
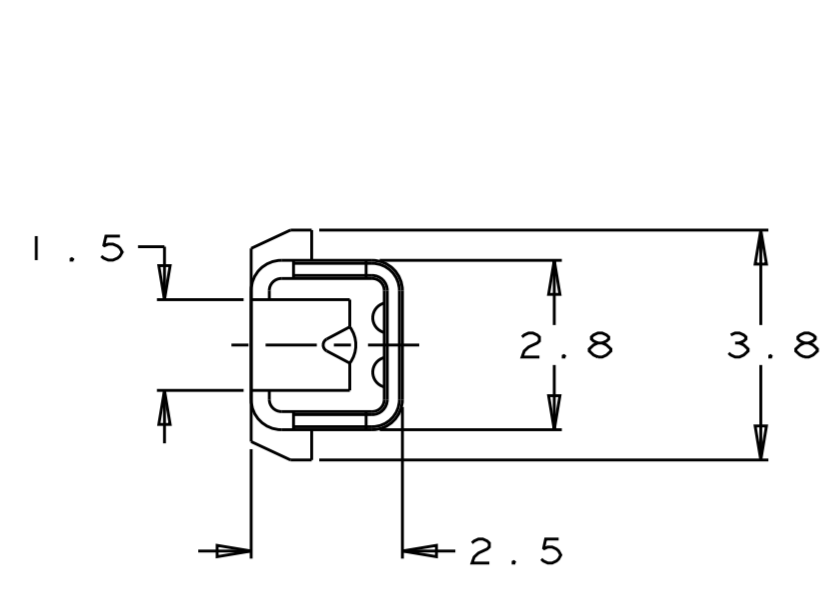


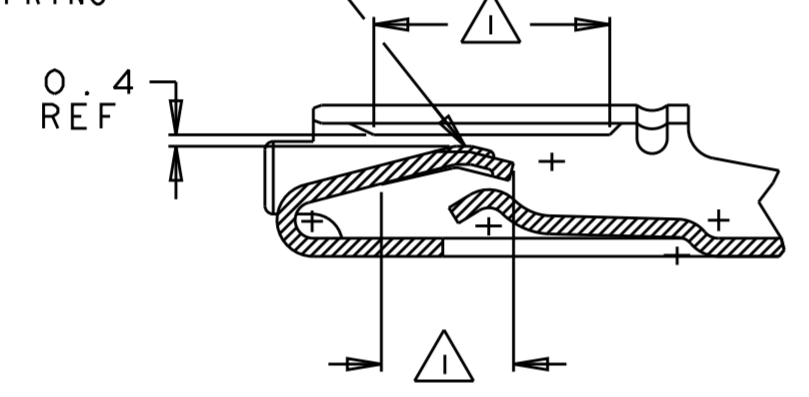
THIS DRAWING IS UNPUBLISHED. RELEASED FOR PUBLICATION  
 © COPYRIGHT BY ALL RIGHTS RESERVED.

REVISIONS				
P	LTR	DESCRIPTION	DATE	APVD
H5		REVISED PER ECO-16-011163	08SEP2016	DD AH

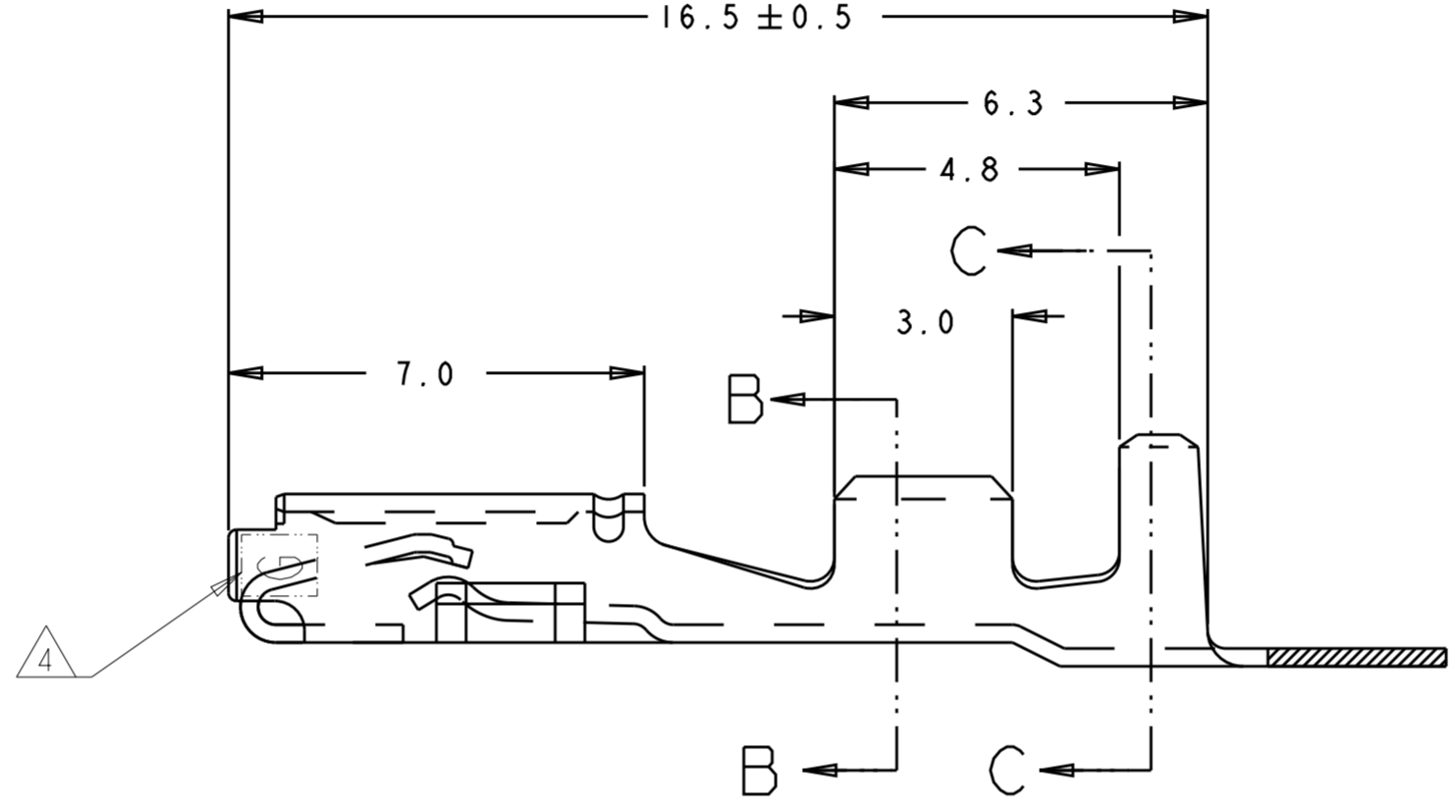


- ① 0.00076 MINIMUM THICK GOLD PLATE OVER 0.0013 MINIMUM NICKEL PLATE.
- ② 0.0008 MINIMUM THICK PRE-TIN.
- ③ 0.75 x 0.75 DIE IDENTIFICATION MARK.
- ④ AT LEAST ONE "G" INDICATOR MUST BE VISIBLE IN THIS LOCATION ON EITHER SIDE INDICATING GOLD PLATED CONTACT.

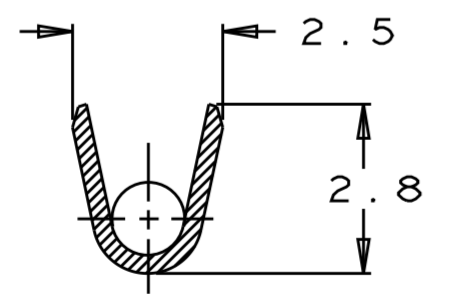
GOLD PLATING IDENTIFIED IS ON TOP SPRING



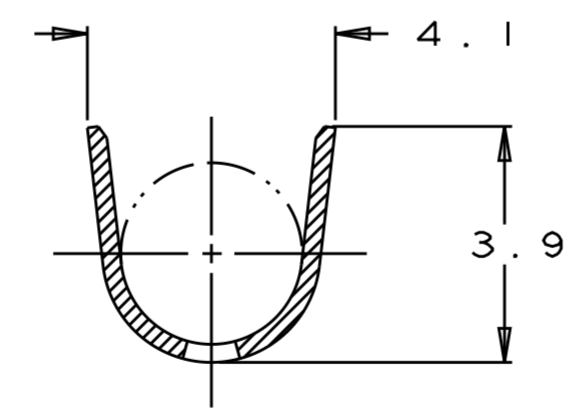
SECTION A-A



④



SECTION B-B



SECTION C-C

②	1.2 - 2.7	AVS 0.5 - 2.0mm <sup>2</sup> (#20 - #14 AWG)	184030-3
①	1.2 - 2.7	AVS 0.5 - 2.0mm <sup>2</sup> (#20 - #14 AWG)	184030-1
FINISH	INSULATION DIA	WIRE RANGE	PART NUMBER

THIS DRAWING IS A CONTROLLED DOCUMENT.

DIMENSIONS: mm	TOLERANCES UNLESS OTHERWISE SPECIFIED:	DWN: KD LYLE 7/07/94	TE Connectivity CONTACT, RECEPTACLE, .070 TYPE
0 PLC ±	1 PLC ±0.3	CHK: JP KUNKLE 7/26/94	
2 PLC ±0.3	3 PLC ±	APVD: JP KUNKLE 7/26/94	
4 PLC ±	ANGLES ±	FINISH ±	
MATERIAL: PHOS BRZ (0.3 THK)		PRODUCT SPEC: -	NAME: -
		APPLICATION SPEC: -	SIZE: A2
		WEIGHT: -	CAGE CODE: 00779
		CUSTOMER DRAWING	DRAWING NO: C-184030
			RESTRICTED TO: -
			SCALE: 10:1
			SHEET: 1 OF 1
			REV: H5