

SFC5xxx

Quick start guide
for mass flow controller kit



Thank you for your interest
in our mass flow controller solutions.

Sensirion AG

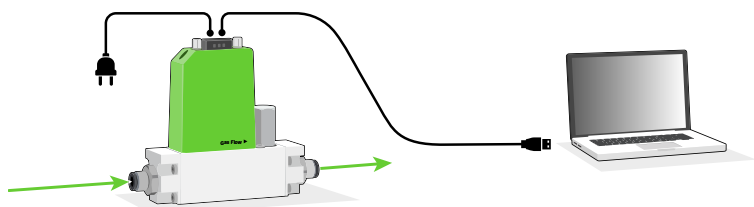
Laubisrütistrasse 50 · 8712 Stäfa · Switzerland · phone +41 44 306 40 00 · info@sensirion.com
www.sensirion.com

SENSIRION

01

Set-up

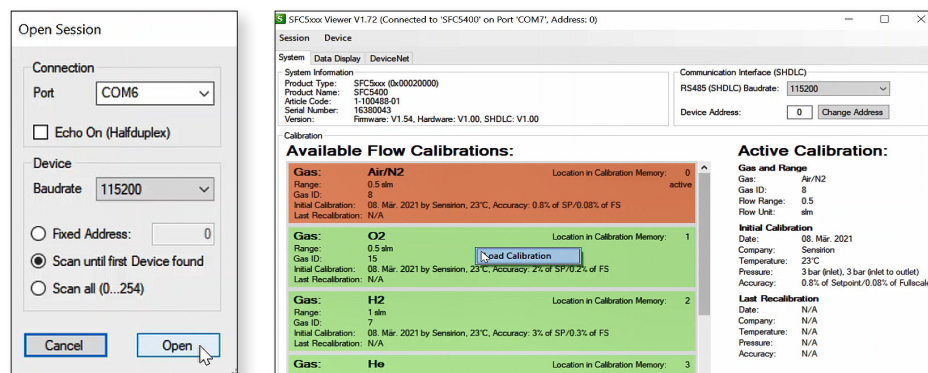
- Install up-to-date “SFC5xxx viewer” software and USB drivers from our website.
- Connect your mass flow controller to a source of pressurized gas (mind the arrow indicating flow direction). For your first measurement, the outlet can stay unconnected.
- Connect the DB9 cable to the mass flow controller (sold separately from evaluation kit).
- Connect the USB part of the cable to your PC.
- Choose the right plug, insert it into power adapter and connect it to 100-240 VAC.



02

Getting started with Sensirion SFC5xxx viewer software

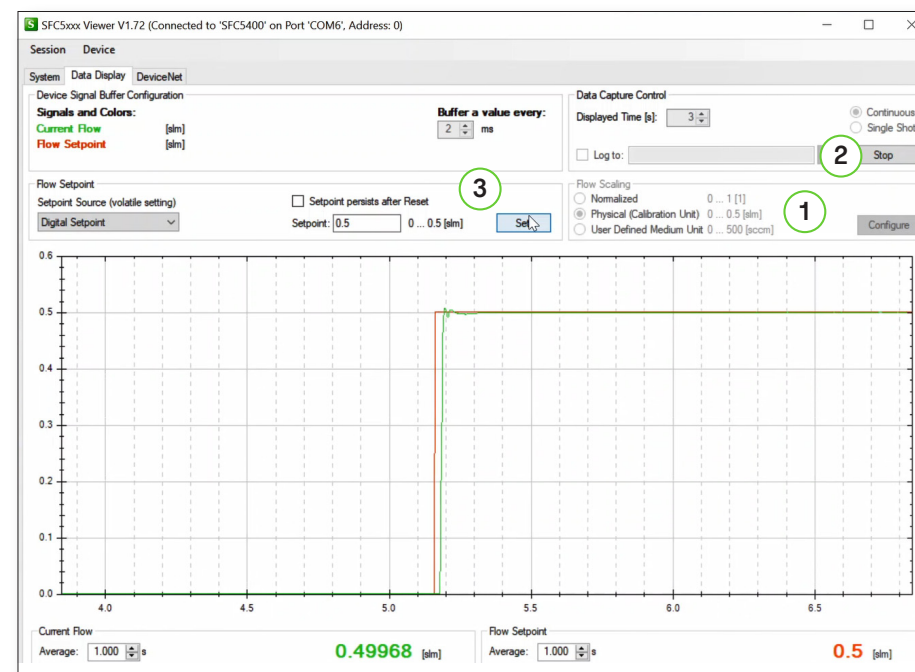
- Start the SFC5xxx viewer software.
- Select the COM port the mass flow controller is connected to and click “Open”.
- Choose the calibration for the gas you have connected, right-click on it and select “Load Calibration”.



03

Controlling gas flow

- Go to “Data Display” tab.
- ① Select the desired flow units (e.g. normalized or physical calibration units).
- ② Click “Run”. You can optionally log the data.
- ③ Specify the desired flow set point and click „Set“.



Please find all information about our mass flow controllers, including necessary software, on our website: www.sensirion.com/sfc5500

