

JBC NASE

2-Tool Nano Rework



Rework beyond limits

Ideal for soldering and reworking the smallest SMD. It provides all the advantages of JBC Most Efficient Soldering System.

- Improving the soldering quality thanks to JBC Intelligent Heat Management and, additionally, Sleep & Hibernation Modes that extend tip life till 5 times longer
- Complete Tip Cleaning System with an integrated wiper and brush
- Cartridge Holder and JBC Exclusive Cartridge Exchanger, which increases efficiency
- Connection to JBC Fume Extractor via connector RJ12
- Connectivity: data download, remote control for traceability and software updates
- NT115 Nano Handle and AN115 Adjustable Nano Tweezers, which work with our C115 Cartridge Range



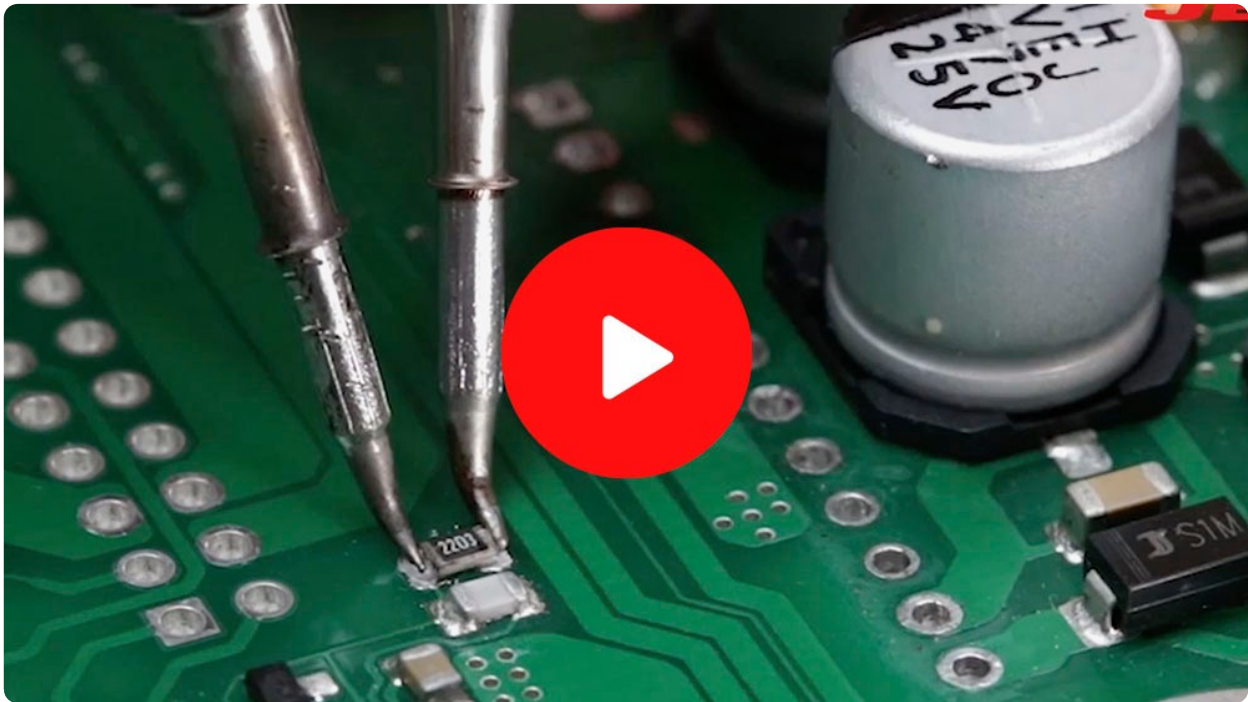
**Don't believe us...
TRY IT!**



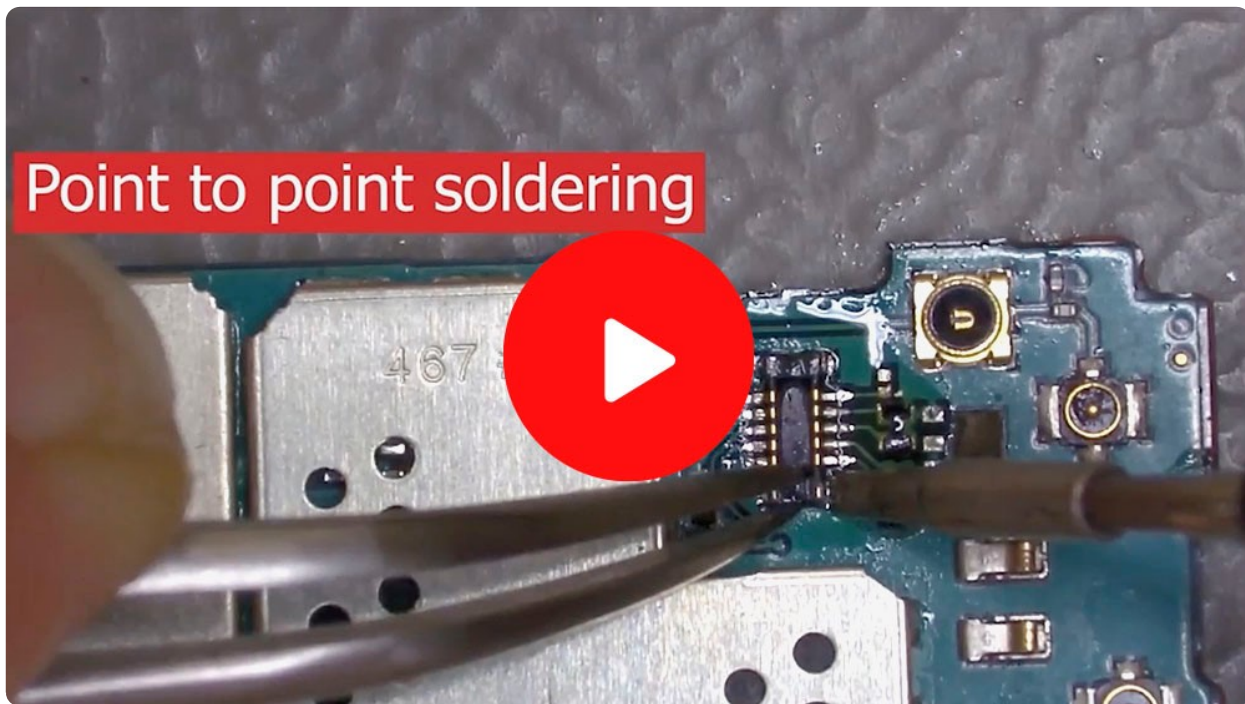
Videos



Discover NASE
How it works and all its features



Highest Precision Rework
with our NASE Station.



Connector Rework
with our NASE Station.

REFERENCES

NASE-9C 100 V
NASE-1C 120 V
NASE-2C 230 V

PRODUCT COMPOSITION

- 1 [Instruction Manual](#)
- 1 [NAE 2-Tool Nano Control Unit](#)
- 1 [AN115 Adjustable Nano Tweezers](#)
- 1 [NT115 Nano Handle](#)
- 1 [C115101 Conical Ø 0.1](#)
- 1 [C115103 Conical Ø 0.3 S1](#)
- 2 [C115105 Conical Bent Ø 0.3](#)
- 1 [C115107 Conical Ø 0.8](#)
- 1 [C115112 Knife 2.5 x 0.3](#)
- 2 [C115113 Chisel 1 x 0.3](#)
- 1 [P405 Pedal](#)

Related

SPECIFICATIONS

| | |
|---------------------------------|--|
| Peak power | 14W per tool |
| Selectable temperature | 90 - 450 °C / 190 - 840 °F |
| Temperature accuracy | ±3% |
| ESD safe | Meet ANSI/ESD S20.20-2021 |
| Equipotential bonding | Connection to EPA |
| Tip-to-ground resistance | < 2 ohms |
| Tip-to-ground voltage | < 2 mV RMS |
| USB-A | Firmware update Graphics and profiles |
| USB-B | PC communications |
| FAE / Robot connector | Remote control or FAE Fume Extractor connection |
| Pedal connectors | 1 for each tool |

WEIGHT AND DIMENSIONS

| | |
|---------------------|---|
| Control Unit | 140 x 170 x 125 mm / 2.49 kg. 5.51 x 6.69 x 4.92 in / 5.49 lb. |
| Package | 280 x 280 x 164 mm / 2.99 kg. 11.02 x 11.02 x 6.46 in / 6.59 lb. |



JNA
High-Precision Hot Air



CDN
High-Precision Soldering Station



NANE
2-Tool Nano Soldering

CONNECTABLES

Compatible tools



NP115-A

Nano Tweezers



AN115-A

Adjustable Nano Tweezers



NT115-A

Nano Handle

Accessories



P-405

Pedal for Nano Rework Station



CC2002

Cable Collector



A1205

Extension lead for Nano stations

Consumables



CL2466

Metal Brush for Nano Stations



0016079

Rubber Grips for Nano Tools



FAE1

Fume Extractor with FAE1100 for 1 Workbench



FAE2-5B

Fume Extractor for 2 Workbenches