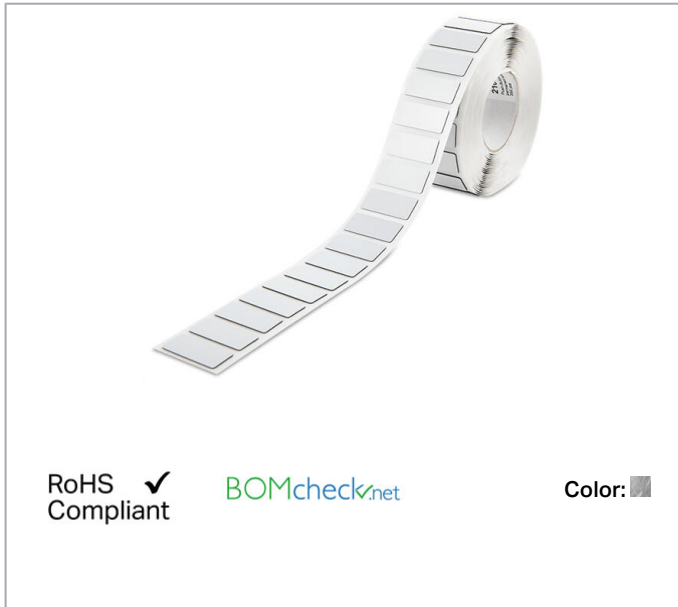


## Data sheet | Item number: 210-842

Push-button marker; for frames, to be snapped in or glued in place; 27 x 12.5 mm; silver-colored

[www.wago.com/210-842](http://www.wago.com/210-842)



### Data

#### Technical data

Suitable	for Siemens
Marking	plain
Pre-assembly	350 markers/reel
Marking device	Smart Printer (Thermal Transfer Printer)

#### Physical data

Height	27 mm
Width	12.5 mm
Depth	0.65 mm
Marking surface	27 x 12.5 mm

#### Mechanical data

Mounting type	Snap-in or adhesive mounting
Smear resistance	smudge-proof in conjunction with 258-5005 Ink Ribbon

Subject to changes. Please also observe the further product documentation!

WAGO Kontakttechnik GmbH & Co. KG  
Hansastr. 27  
32423 Minden  
Phone: +49571 887-0 | Fax: +49571 887-169  
Email: [info.de@wago.com](mailto:info.de@wago.com) | Web: [www.wago.com](http://www.wago.com)

Do you have any questions about our products?  
We are always happy to take your call at +49 (571) 887-44222.

## Material data

Color	silver-colored
Material	Polyester
Adhesive information	Acrylic; permanent; foamed
Halogen-free	Yes
Weight	85 g

## Environmental requirements

Surrounding air temperature (storage)	≥22 °C
Relative humidity	40 ... 50 %

## Commercial data

Packaging type	bag
Country of origin	DK
GTIN	4055143965156
Customs tariff number	39191080888

## Required accessories

### protection



Item no.: 210-843

Cover; for frames, snap-in type, 27 x 12.5 mm; halogen-free; transparent

[www.wago.com/210-843](http://www.wago.com/210-843)

## Downloads

### Documentation

#### Operating Instructions

210-852 Information on handling print material	1	pdf	Download
	28. 8. 2020	1.0 MB	

## Environmental Product Compliance

### Compliance Search

Environmental Product Compliance 210-842	URL	Download
Push-button marker; for frames, to be snapped in or glued in place; 27 x 12.5 mm; silver-colored		

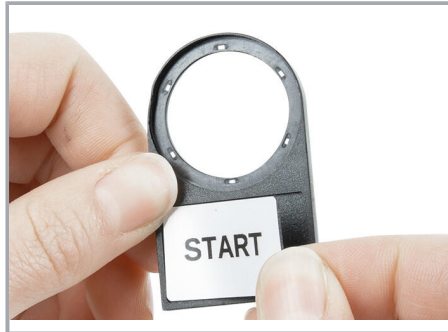
Subject to changes. Please also observe the further product documentation!

## Installation Notes

### Stick on frame



Remove the push-button label from the carrier film.



Stick the push-button label onto the push-button frame.



WAGO's push-button label is attached to the push-button frame. A cover cannot be applied.

### Snap into frame



Remove the push-button label from the carrier film. Press and hold the pre-punched carrier film to do this.



Snap the push-button label, with the carrier film on the back, on to the push-button frame. Only the area of the push-button label outside the remaining carrier film is adhesive.



Optional: A cover may also be installed on a push-button frame equipped with latches.

Subject to changes. Please also observe the further product documentation!



Push-button label and cover are snapped on to the push-button frame.

Subject to changes. Please also observe the further product documentation!