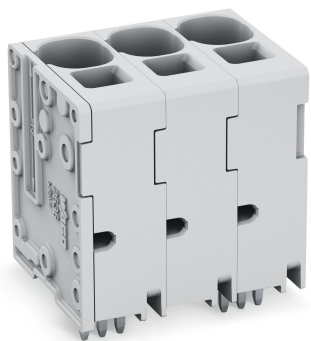


Data sheet | Item number: 2636-3106/020-000

PCB terminal block; 16 mm<sup>2</sup>; Pin spacing 10 mm; 6-pole; Push-in CAGE

CLAMP®; 16,00 mm<sup>2</sup>; gray

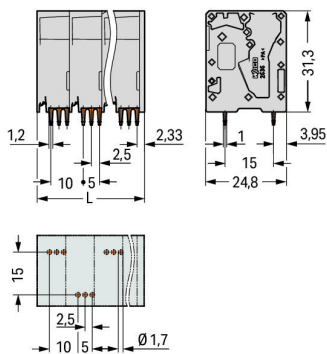
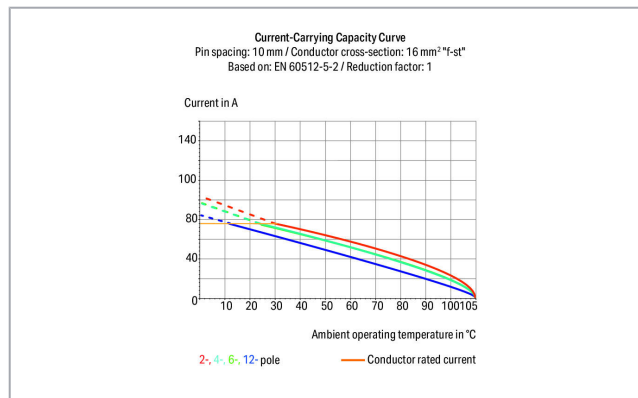
[www.wago.com/2636-3106/020-000](http://www.wago.com/2636-3106/020-000)



**i** Picture differs from the item.

RoHS Compliant

Color:



$$L = (\text{pole no.} - 1) \times \text{pin spacing} + 11.6 \text{ mm}$$

### Item description

- PCB terminal strips with Push-in CAGE CLAMP® connection
- Push-in termination of solid and ferruled conductors
- Ideal for panel feedthrough applications via operation parallel to conductor entry

Subject to changes. Please also observe the further product documentation!

WAGO Kontakttechnik GmbH & Co. KG

Hansastr. 27

32423 Minden

Phone: +49571 887-0 | Fax: +49571 887-169

Email: [info.de@wago.com](mailto:info.de@wago.com) | Web: [www.wago.com](http://www.wago.com)

Do you have any questions about our products?

We are always happy to take your call at +49 (571) 887-44222.



- Testing can be performed both parallel and perpendicular to conductor entry

## Data

### Electrical data

#### Ratings per IEC/EN

| Ratings per                 | IEC/EN 60664-1  |
|-----------------------------|---|
| Nominal voltage (III/3)     | 1000 V  |
| Rated surge voltage (III/3) | 8 kV  |
| Rated voltage (III/2)       | 1000 V  |
| Rated surge voltage (III/2) | 8 kV  |
| Nominal voltage (II/2)      | 1000 V  |
| Rated surge voltage (II/2)  | 8 kV  |
| Rated current               | 76 A  |
| Legend (ratings)            | (III / 2) $\hat{=}$ Overvoltage category III / Pollution degree 2 |

#### Ratings per UL

| Approvals per                  | UL 1059 |
|--------------------------------|---------|
| Rated voltage UL (Use Group B) | 600 V   |
| Rated current UL (Use Group B) | 66 A    |
| Rated voltage UL (Use Group C) | 600 V   |
| Rated current UL (Use Group C) | 66 A    |

#### Ratings per CSA

| Approvals per                   | CSA   |
|---------------------------------|-------|
| Rated voltage CSA (Use Group B) | 600 V |
| Rated current CSA (Use Group B) | 66 A  |
| Rated voltage CSA (Use Group C) | 600 V |
| Rated current CSA (Use Group C) | 66 A  |

### Connection data

|   |  |
|---|--|
| Connection technology                           | Push-in CAGE CLAMP®                        |
| Actuation type                                  | Operating tool                             |
| Solid conductor                                 | 0.75 ... 16 mm <sup>2</sup> / 18 ... 4 AWG |
| Fine-stranded conductor                         | 0.75 ... 25 mm <sup>2</sup> / 18 ... 4 AWG |
| Fine-stranded conductor; with insulated ferrule | 0.75 ... 16 mm <sup>2</sup>                |

Subject to changes. Please also observe the further product documentation!



|   |                                   |
|---|-----------------------------------|
| Fine-stranded conductor; with uninsulated ferrule | 0.75 ... 16 mm <sup>2</sup>       |
| Fine-stranded conductor; with twin ferrule        | 0.75 ... 6 mm <sup>2</sup>        |
| Strip length                                      | 18 ... 20 mm / 0.71 ... 0.79 inch |
| Conductor connection direction to PCB             | 90°                               |
| Pole No.  | 6                                 |
| Total number of connection points                 | 6                                 |
| Total number of potentials                        | 6                                 |
| Number of connection types                        | 1                                 |
| Number of levels                                  | 1                                 |

### Physical data

|                                      |                      |
|--------------------------------------|----------------------|
| Pin spacing                          | 10 mm / 0.394 inch   |
| Width                                | 61.6 mm / 2.425 inch |
| Height                               | 35.3 mm / 1.39 inch  |
| Height from the surface              | 31.3 mm / 1.232 inch |
| Depth                                | 24.8 mm / 0.976 inch |
| Solder pin length                    | 4 mm                 |
| Solder pin dimensions                | 1.2 x 1 mm           |
| Drilled hole diameter with tolerance | 1.7 (+0.1) mm        |

### Mechanical data

|               |                       |
|---------------|-----------------------|
| Mounting type | Feed-through mounting |
|---------------|-----------------------|

### PCB contact

|                                     |  |
|-------------------------------------|--|
| PCB Contact                         | THT  |
| Solder pin arrangement              | over the entire terminal strip (staggered) |
| Number of solder pins per potential | 3  |

### Material data

|                             |  |
|-----------------------------|--|
| Color                       | gray                                   |
| Material group              | I                                      |
| Insulation material         | Polyamide (PA66)                       |
| Flammability class per UL94 | V0                                     |
| Clamping spring material    | Chrome nickel spring steel (CrNi)      |
| Contact material            | Electrolytic copper (E <sub>Cu</sub> ) |
| Contact plating             | tin-plated                             |

Subject to changes. Please also observe the further product documentation!

|        |        |
|--------|--------|
| Weight | 48.5 g |
|--------|--------|

### Environmental requirements

|                         |                 |
|-------------------------|-----------------|
| Limit temperature range | -60 ... +105 °C |
|-------------------------|-----------------|

### Commercial data

|                       |               |
|-----------------------|---------------|
| Packaging type        | BOX           |
| Country of origin     | PL            |
| GTIN                  | 4055143625586 |
| Customs tariff number | 85369010000   |

### Approvals / Certificates

#### Country specific Approvals

| Logo   | Approval                                     | Additional Approval Text | Certificate name |
|--|--|--------------------------|------------------|
|  | <b>CB</b><br>DEKRA Certification B.V.        | EN 60947-7-4             | NL-61617         |
|   | <b>CSA</b><br>DEKRA Certification B.V.       | C22.2                    | 70154737         |
|  | <b>KEMA/KEUR</b><br>DEKRA Certification B.V. | EN 60947-7-4             | 71-110774        |

#### UL-Approvals

| Logo   | Approval                                       | Additional Approval Text | Certificate name |
|--|--|--------------------------|------------------|
|  | <b>cURus</b><br>Underwriters Laboratories Inc. | C22.2 No. 158            | E45172           |

### Compatible products







#### ferrule



Item no.: 216-210

Ferrule; Sleeve for 16 mm<sup>2</sup> / AWG 6; insulated; electro-tin plated; electrolytic copper; gastight crimped; [www.wago.com/216-210](http://www.wago.com/216-210)  
acc. to DIN 46228, Part 4/09.90; blue

Subject to changes. Please also observe the further product documentation!

|  |  |  |
|--|--|--|
|  | <p><b>Item no.: 216-284</b><br/>                     Ferrule; Sleeve for 1.5 mm<sup>2</sup> / AWG 16; insulated; electro-tin plated; electrolytic copper; gastight crimped; acc. to DIN 46228, Part 4/09.90; black</p> | <a href="http://www.wago.com/216-284">www.wago.com/216-284</a> |
|  | <p><b>Item no.: 216-286</b><br/>                     Ferrule; Sleeve for 2.5 mm<sup>2</sup> / AWG 14; insulated; electro-tin plated; electrolytic copper; gastight crimped; acc. to DIN 46228, Part 4/09.90; blue</p>  | <a href="http://www.wago.com/216-286">www.wago.com/216-286</a> |
|  | <p><b>Item no.: 216-287</b><br/>                     Ferrule; Sleeve for 4 mm<sup>2</sup> / AWG 12; insulated; electro-tin plated; electrolytic copper; gastight crimped; acc. to DIN 46228, Part 4/09.90; gray</p>    | <a href="http://www.wago.com/216-287">www.wago.com/216-287</a> |
|  | <p><b>Item no.: 216-288</b><br/>                     Ferrule; Sleeve for 6 mm<sup>2</sup> / AWG 10; insulated; electro-tin plated; electrolytic copper; gastight crimped; acc. to DIN 46228, Part 4/09.90; yellow</p>  | <a href="http://www.wago.com/216-288">www.wago.com/216-288</a> |
|  | <p><b>Item no.: 216-289</b><br/>                     Ferrule; Sleeve for 10 mm<sup>2</sup> / AWG 8; insulated; electro-tin plated; electrolytic copper; gastight crimped; acc. to DIN 46228, Part 4/09.90; red</p>     | <a href="http://www.wago.com/216-289">www.wago.com/216-289</a> |
| <b>tools</b>   |  |  |
|  | <p><b>Item no.: 210-721</b><br/>                     Operating tool; Blade: 5.5 x 0.8 mm; with a partially insulated shaft; multicoloured</p>  | <a href="http://www.wago.com/210-721">www.wago.com/210-721</a> |

## Downloads

### Documentation

#### Additional Information

|                        |            |               |          |
|------------------------|------------|---------------|----------|
| Technical explanations | 3. 4. 2019 | pdf<br>2.0 MB | Download |
|------------------------|------------|---------------|----------|

## CAD/CAE-Data

### CAD data

|                                |     |          |
|--------------------------------|-----|----------|
| 2D/3D Models 2636-3106/020-000 | URL | Download |
|--------------------------------|-----|----------|

### PCB Design

|  |     |          |
|--|-----|----------|
| Symbol and Footprint 2636-3106/020-000 | URL | Download |
|--|-----|----------|

CAX data for your PCB design, consisting of "schematic symbols and PCB footprints", allow easy integration of the WAGO component into your development environment.

### Supported formats:

- Accel EDA 14 & 15
- Altium 6 to current version
- Cadence Allegro
- DesignSpark

Subject to changes. Please also observe the further product documentation!



- Eagle Libraries
- KiCad
- Mentor Graphics BoardStation
- Mentor Graphics Design Architect
- Mentor Graphics Design Expedition 99 and 2000
- OrCAD 9.X PCB and Capture
- PADS PowerPCB 3, 3.5, 4.X, and 5.X
- PADS PowerPCB and PowerLogic 3.0
- PCAD 2000, 2001, 2002, 2004, and 2006
- Pulsonix 8.5 or newer
- STL
- 3D STEP
- TARGET 3001!
- View Logic ViewDraw
- Quadcept
- Zuken CadStar 3 and 4
- Zuken CR-5000 and CR-8000

PCB Component Libraries (EDA), PCB CAD Library Ultra Librarian

---

#### CAE data

|                                |                     |                          |
|--------------------------------|---------------------|--------------------------|
| ZUKEN Portal 2636-3106/020-000 | <a href="#">URL</a> | <a href="#">Download</a> |
|--------------------------------|---------------------|--------------------------|

---

#### Environmental Product Compliance

##### Compliance Search

|  |                     |                          |
|--|---------------------|--------------------------|
| Environmental Product Compliance 2636-3106/020-000<br>PCB terminal block; 16 mm <sup>2</sup> ; Pin spacing 10 mm; 6-pole; Push-in CAGE CLAMP®;<br>16,00 mm <sup>2</sup> ; gray | <a href="#">URL</a> | <a href="#">Download</a> |
|--|---------------------|--------------------------|

---

#### Installation Notes

Subject to changes. Please also observe the further product documentation!

---

WAGO Kontakttechnik GmbH & Co. KG  
Hansastr. 27  
32423 Minden  
Phone: +49571 887-0 | Fax: +49571 887-169  
Email: [info.de@wago.com](mailto:info.de@wago.com) | Web: [www.wago.com](http://www.wago.com)

Do you have any questions about our products?  
We are always happy to take your call at +49 (571) 887-44222.