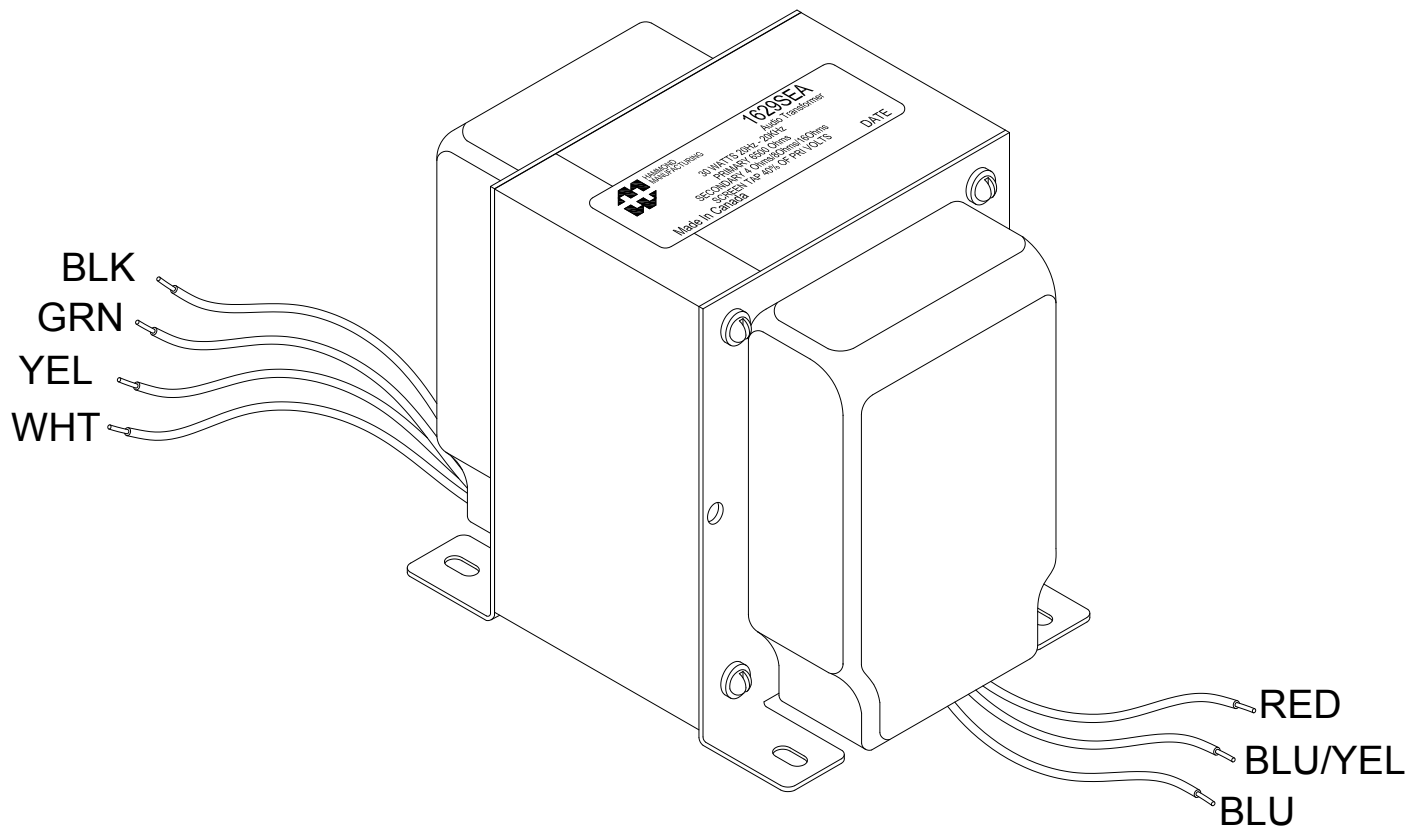


1629SEA

SINGLE ENDED "CLASSIC" TUBE OUTPUT TRANSFORMER – ULTRA-LINEAR

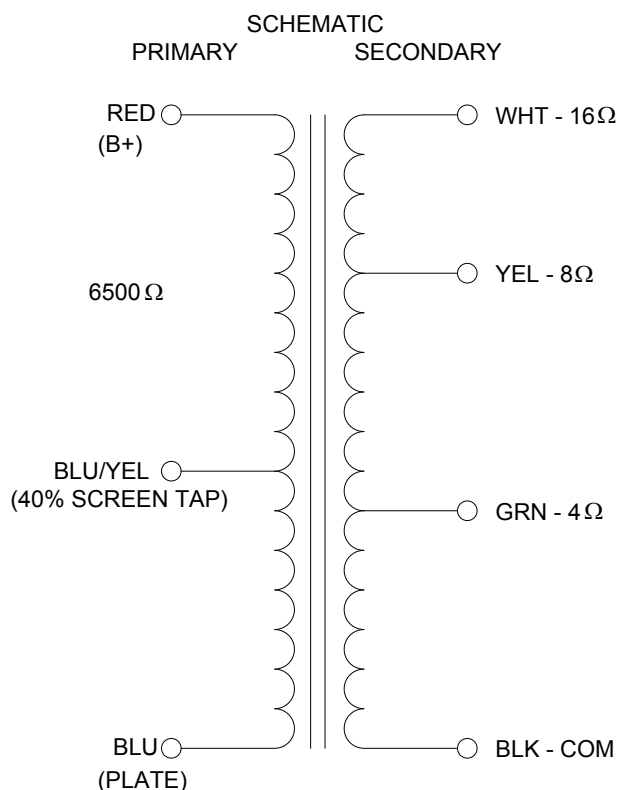
- Over designed" for high fidelity, single ended, Class-A, tube output circuits (triode, tetrode or pentode tubes).
- Enclosed (shielded), four slot, chassis Type "X" mounting.
- Frequency response at least 20Hz. to 20Khz. at full rated power (+/- 1db max., ref. 1Khz.)
- Insulated flexible leads 8" min.
- For maximum versatility, all units (except the 1642SE & 1638SEA) include a 40% screen tap for Ultra-Linear, tetrode/pentode operation (if desired). The 1642SE & 1638SEA do NOT include this screen tap as they were designed principally for high impedance triode tubes.
- High quality laminations, (M6) grain oriented silicon steel.
- Core is gapped to reduce core saturation in Class-A tube amplifier circuits.
- For general purpose or replacement use in single ended tube output circuits see our [125SE Series](#).

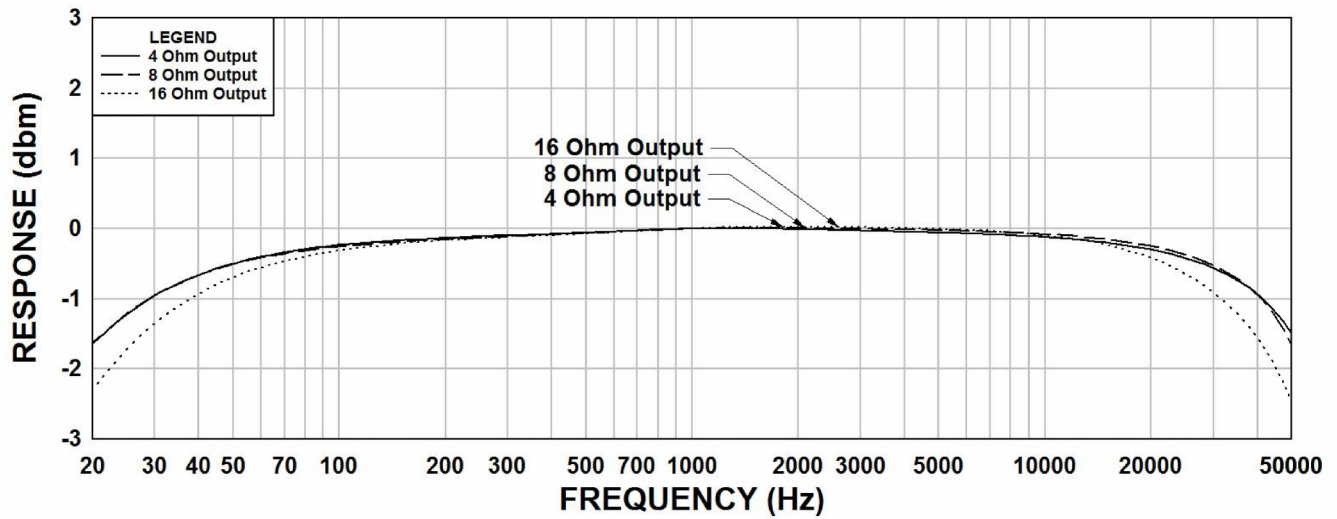
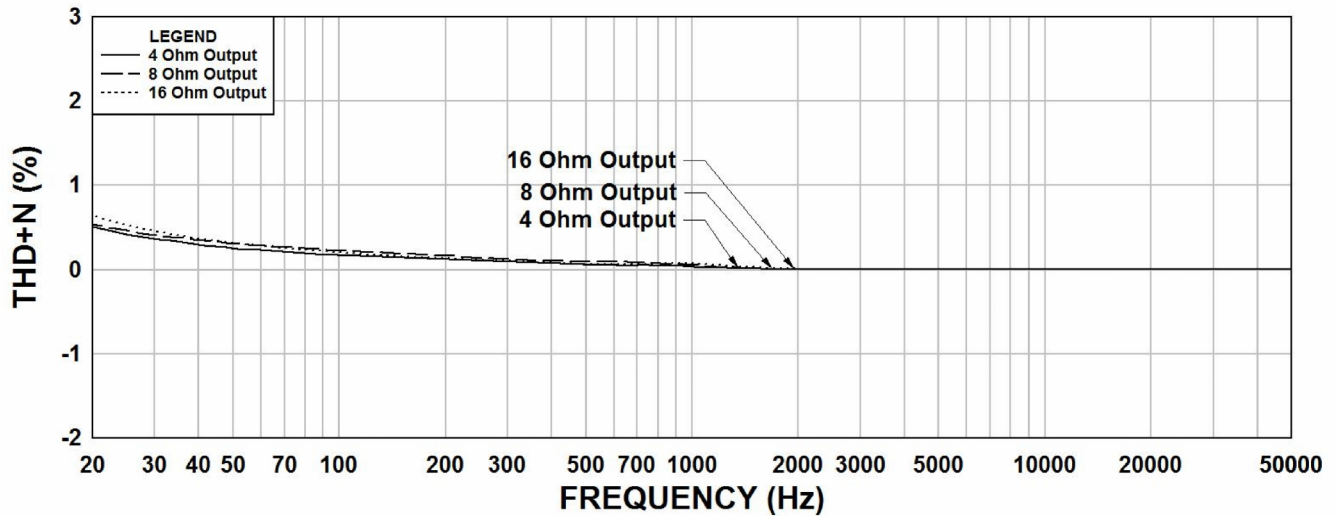
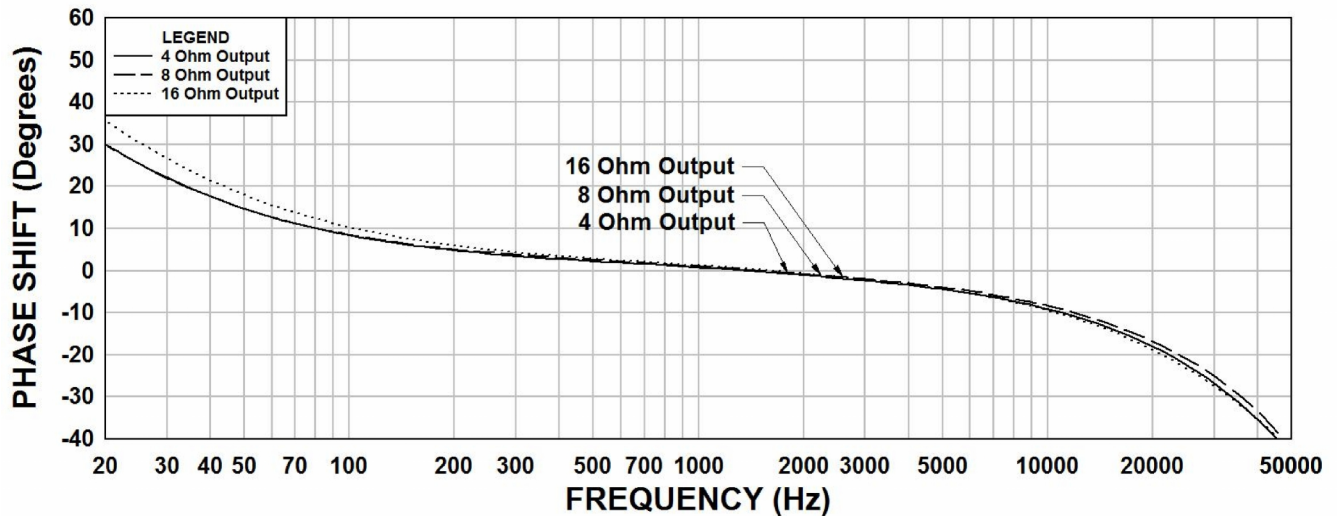


*For Full Dimensional Details see page 4

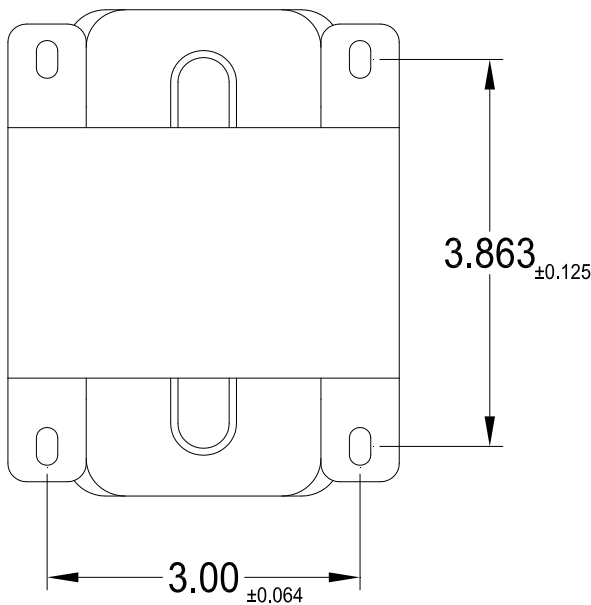
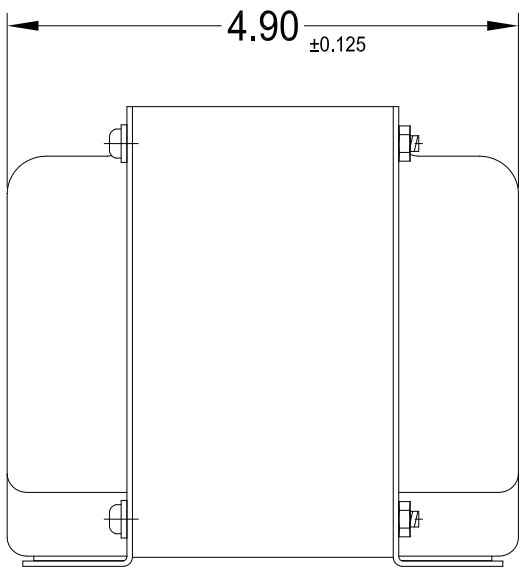
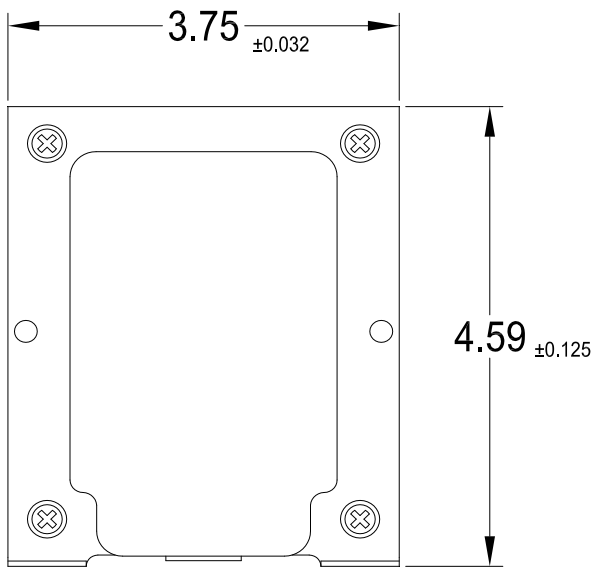
ELECTRICAL SPECIFICATIONS****Schematic and Hook Up Data**

<u>Characteristic</u>	<u>Typical</u>
Input Impedance	6500 Ω
Output Impedance	4 Ω /8 Ω /16 Ω
Output Power	30Watts
Primary - DCR	
Blue – Red	197 Ω
Secondary DCR	
Black – Green	414m Ω
Black – Yellow	517m Ω
Black – White	721m Ω
Inductance	@ 1.0kHz, 1.0V OC
Primary – Blue – Red	20.4Hy
Black – Green	52.7mH
Black – Yellow	91.8mH
Black – White	149mH
Impedance	@ 1.0kHz, 1.0V OC
Primary – Blue – Red	126K Ω
Black – Green	236 Ω
Black – Yellow	432 Ω
Black – White	738 Ω
Frequency Response	See graphs for specific response, Typ. ± 1.0 db from 20Hz to 20KHz
Dielectric Strength	2000Vrms
Temperature Range	-40 To 105°C

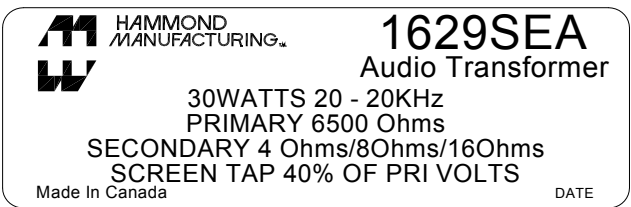


1629SEA Frequency Response $R_s = 6.5K$ Ohms**1629SEA THD+N $R_s = 6.5K$ Ohms****1629SEA Phase Shift $R_s = 6.5K$ Ohms**

Dimensional Details:



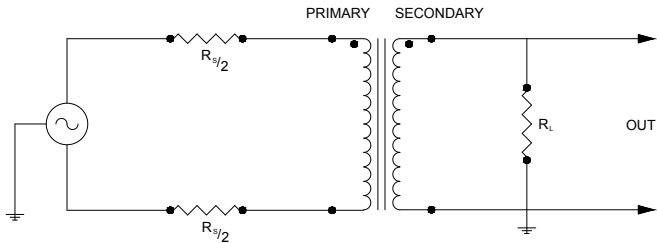
Label:



TYPICAL TEST CIRCUIT

Measurement instruments
Hp4192a impedance analyzer
Hp3456a DVM
Keithley 2002 DVM
D scope series iii audio analyzer
Wayne Kerr 3255B with a 3265B

* All graphs input level 20dbu.
** The results are typical and are subject to normal manufacturing and electrical tolerances.



This drawing and the information in it is the property of Hammond Manufacturing. It may not be reproduced, transmitted or used in any manner whatsoever without the written permission of Hammond Manufacturing. Data subject to change without notice.