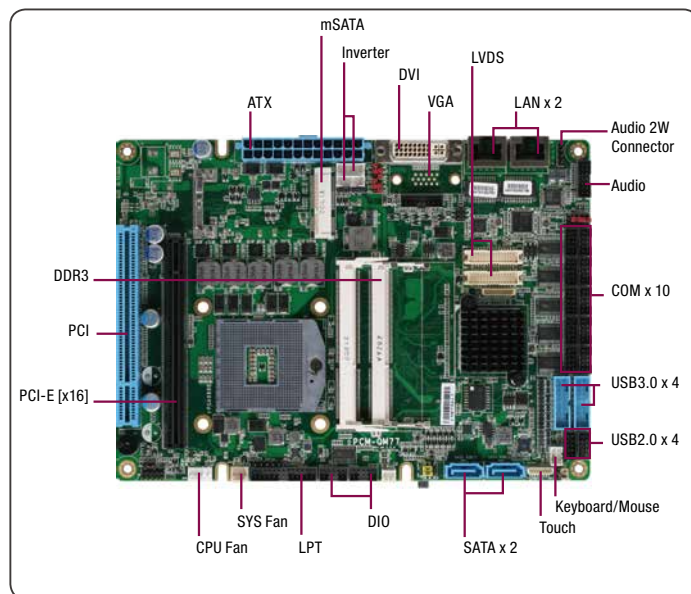


01 PCM-QM77

Compact Boards

Compact Board with Intel® 3rd Generation Core™ i7/i5/i3/Celeron® Mobile Processor



Features

- Intel® 3rd Generation Core™ i7/i5/i3/Celeron® PGA Processor
- Intel® 3rd Generation Core™ i Series + QM77/HM76
- 204-pin SODIMM DDR3/L 1333/1600 MHz x 2, Up to 16 GB
- Intel® 82579LM x 1/ Intel® 82583V x 1, 10/100/1000Base-TX Ethernet, RJ-45 x 2
- Up to 24-bit Dual-Channel LVDS x 2, CRT, DVI
- 2CH HD Audio
- SATA 6.0 Gb/s x 2, mSATA x 1, CFast™ x 1
- USB 3.0 x 4, USB2.0 x 4, COM x 10, 16-bit Digital I/O
- Mini-Card x 1, Touch (Optional), TPM, PCI, PCI-E [x16], SIM Card, LPT
- AT/ATX Power Input (Default ATX)
- Supports iAMT8.0 and RAID 0,1 for QM77 Chipset
- Supports AAEON Hi-Safe/Hi-Manager SDK & Utility

Specifications

System	
Form Factor	5.25" Compact Board
CPU	Intel® Core™ i7/i5/i3/Celeron® IVY bridge and Sandy Bridge (Socket-G2 based)
CPU Frequency	Up to 2.5 GHz
Chipset	Intel® QM77/HM76
Memory Type	DDR3 1066/1333/1600, SODIMM x 2 up to 16G
Max. Memory Capacity	8 GB
BIOS	UEFI
Wake on LAN	Yes
Watchdog Timer	255 Levels
Power Requirement	ATX
Power Supply Type	ATX
Power Consumption (Typical)	—
Dimension (L x W)	8" x 5.75" (203mm x 146mm)
Operating Temperature	32°F ~ 140°F (0°C ~ 60°C)
Storage Temperature	-40°F ~ 176°F (-40°C ~ 80°C)
Operating Humidity	0% ~ 90% relative humidity, non-condensing
MTBF (Hours)	60,000
Certification	CE/FCC
Display	
VGA/LCD Controller	Intel® Core™ i7/i5/i3 integrated
Video Output	CRT, LVDS LCD, DVI-I
Backlight Inverter Supply	Max. 12V
I/O	
Ethernet	Intel® 82579LM x 1, Intel® 82583V x 1, 10/100/1000Base-TX need Pin header for LAN
Audio	Realtek ALC892, 2.1CH
USB Port	USB3.0 x 4, USB 2.0 x 4
Serial Port	RS-232 x 8, RS-232/422/485 x 2
Parallel Port	SPP/EPP/ECP x 1 or FDD Function
HDD Interface	SATA 3.0 x 2, SATA 2.0 x 2
FDD Interface	—
SSD	CFast, mSATA
Expansion Slot	PCI-Express [x16], Mini-Card or mSATA, PCI, Mini PCI Digital I/O (8 in/8 out) iAMT 8.0 support 5V/12V Voltage output
PWM LCD Support	—
DIO	16 bit
TPM	Optional
Touch	Optional



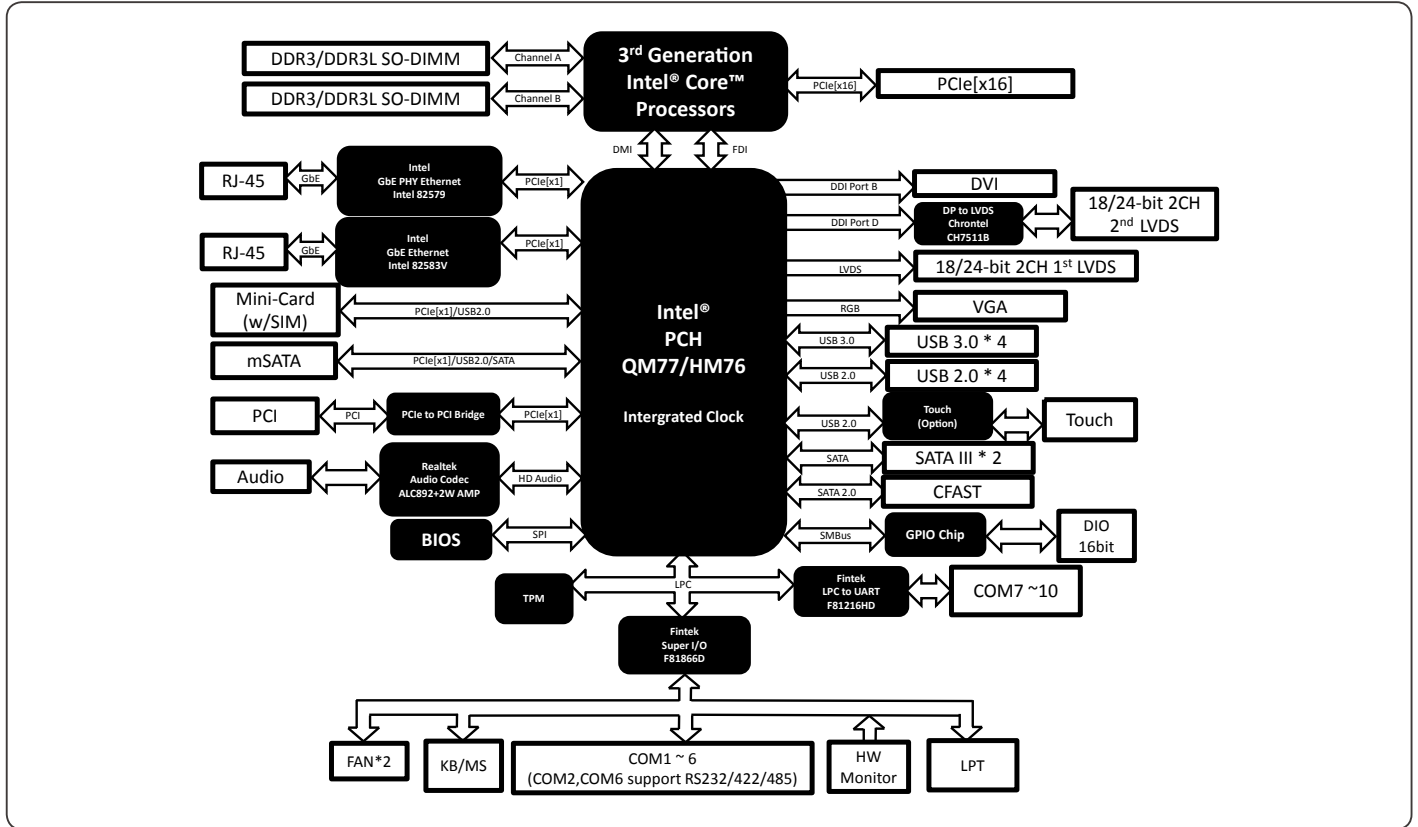
Packing List

- Jumper Cap
- CPU Cooler FAN + Heatsink
- Product DVD
- PCM-QM77

Optional Accessories

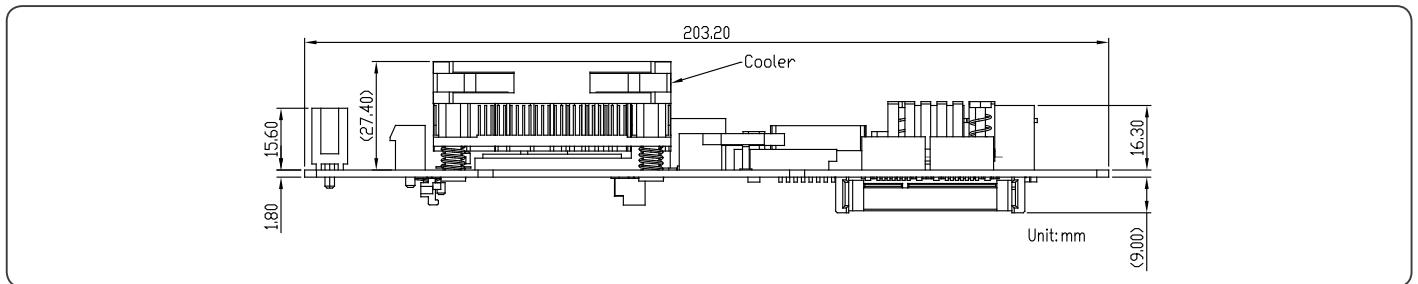
- 1701100206
COM Port Cable 20cm
- 1700200401
USB3.0 Cable 40cm x 2
- 1709100201
USB2.0 Cable 20cm
- 1700060152
PS2 KB/MS Cable 15cm
- 1709070500
SATA Cable 50cm
- 1702150155
SATA HDD Power Cable 15cm
- 1700140510
Audio Cable 51cm
- 1700160201
VGA Cable 20cm
- 1701260200
Parallel Port Cable 20cm

Block Diagram



Dimension

Unit: mm



Ordering Information

Part Number	CPU	Memory	Fan/Fanless	Display	LVDS	Storage	LAN	USB	RS-232	RS-232/422/485	Expansion Slot	Power	Power Temp	Others
PCM-QM77-A10	Socket 988B	DDR3 x 2 (Max. 16 GB)	Fan	CRT+DVI, CRT+LVDS, DVI+LVDS	24b, 2CH	SATA x 2, mSATA/ Mini-Card x 1	GbE x 2	USB3.0 x 4 USB2.0 x 4	8	2	PCI-Express [x16], PCI x 1 Mini-Card x 1, SIM x 1	ATX	0°C - 60°C	TPM DIO 16-bit, LPT