

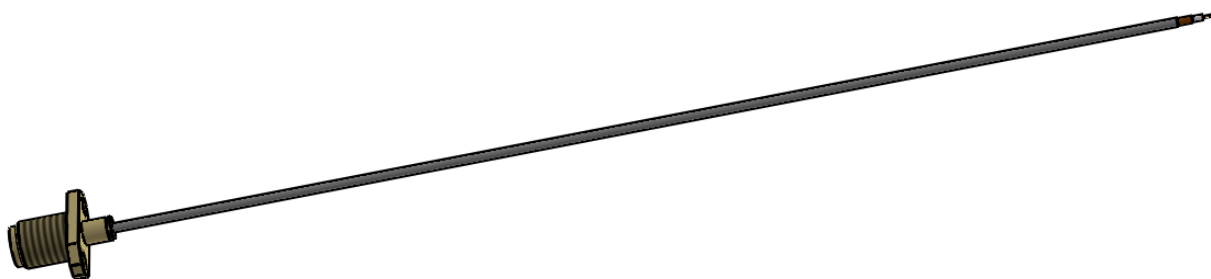
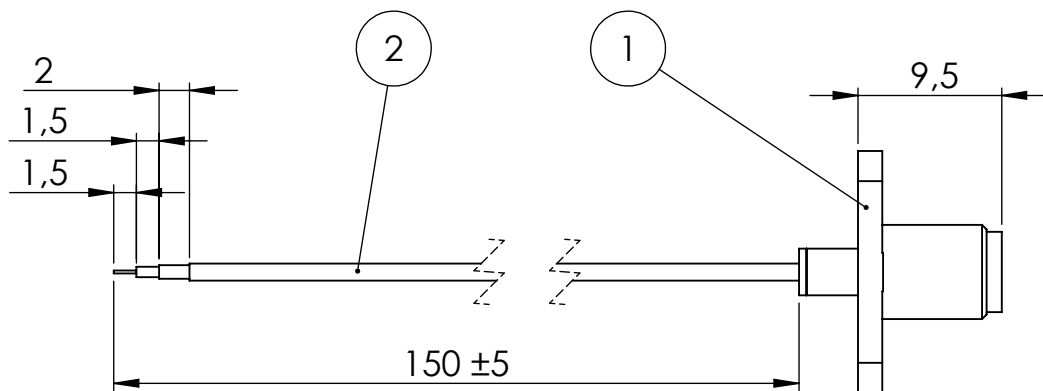
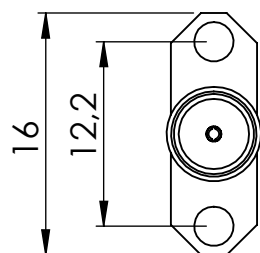
1

2

3

4

REVISION	INDEX	PREVIOUS VALUE	NEW VALUE	APPROVED	DATE



ISO 2768-mK

ITEM NO.	PART NUMBER	DESCRIPTION	QTY.
1	C715G v1.0	SMA Female 2 hole flange for dia.1.13mm cable straight gold	1
2	015_113-SE	1,13mm cable	1

THE INFORMATION CONTAINED IN THIS DRAWING IS THE SOLE PROPERTY OF 2J SRO

AUTHOR	B. Pangrác		DEBUR AND BREAK SHARP EDGES	STEFANIKOVA 61 BARDEJOV 085 01 TEL: +421 54 488 0130 SLOVAK REPUBLIC FAX: +421 54 488 2971	
DATE	3. 7. 2013				
CHECKED BY					
APPROVED					
NOTES:	FINISH:	TITLE: C715G-015_113-SE v1.0			
	MATERIAL:	DWG NO. 2J-PR-C715G-015_113-SE-1.0-01		REVISION	A4
	WEIGHT: g	SCALE: 2:1			
DO NOT SCALE DRAWING		SHEET 1 OF 1		UNLESS OTHERWISE SPECIFIED: DIMENSIONS ARE IN MILLIMETERS	