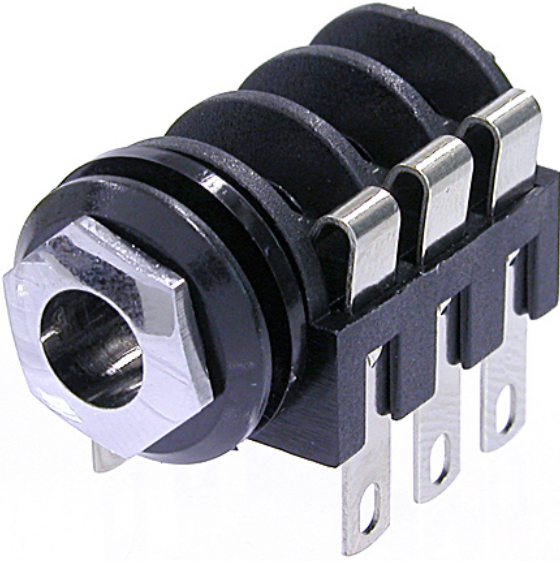


NMJ6HC-S

1/4" stereo jack, switched, with chrome ferrule and standard solder lugs, mounting nut included



Features & Benefits

- Wide body and extremely durable contacts
- Mates with all stereo A-gauge plugs acc. EIA RS-453 standard

Technical Information

Product	
Title	NMJ6HC-S
Connection Type	Jack
Gender	female

Electrical	
Contact resistance	< 15 mΩ
Contact resistance	< 30 mΩ
Dielectric strength	1 kVdc
Insulation resistance	≥ 1 GΩ @ 500 V dc
Rated current per contact	3 A
Rated current per contact	0,50 A @ 50 V (Switch contact)
Switching contacts	3

Mechanical	
Insertion force	< 30 N
Withdrawal force	> 10 N
Lifetime	> 10000 mating cycles
Panel thickness	< 4.7 mm
Wiresize	
Wiring	Horizontal PCB mount
Locking device	Retention spring
Mounting direction	Rear mounting
Chassis shape	11.4 mm

Material	
Cap / Nut / Washer	PA 6.6 15% GR
Contact plating	2 μm Ag
Contacts	Bronze (CuSn6)
Shell	Polyamide (PA 6.6 15 % GR)

Environmental	
Standard compliance	EIA RS 453, IEC 60603-11
Solderability	Complies with IEC 68-2-20
Temperature range	-25 °C to +70 °C