


# 2J0502 (DATASHEET)

<b>Type</b>	WiFi/Bluetooth antenna
<b>Frequencies</b>	WIFI / BLUETOOTH (2.4 GHz) WIFI (5.0 GHz)
<b>Mounting</b>	Telematic Mount
<b>Revision</b>	00



P. Tipul



D. Noble

# 1. SPECIFICATION

## 1.1. Electrical Specifications

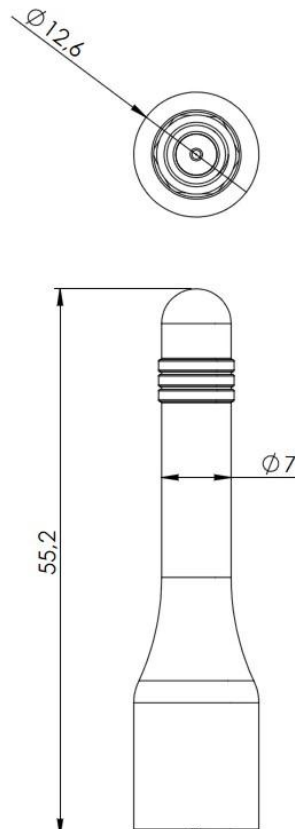
Frequencies	WIFI / BLUETOOTH (2.4 GHz) WIFI (5.0 GHz)
Impedance	50 Ohms
Polarization	VERTICAL
Gain	0dBi for 2.4GHz and 2dBi for 5GHz
VSWR	<1.5:1
Power handling	20W
Operating temperature	-40°C to +85°C

## 1.2. Connection Specifications

Connector: SMA male

## 1.3. Mechanical Specifications and Dimensions

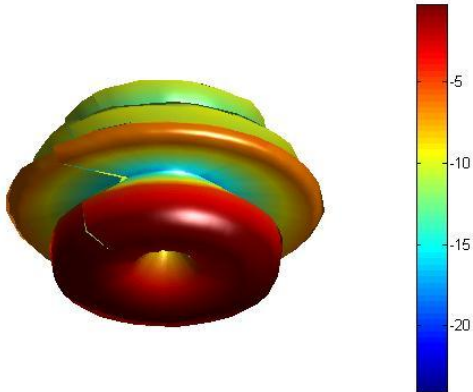
Material: TPE  
 Max. dimensions: 12.6mm x 55.2 mm (D x H)  
 Weight: 6.6 g  
 Colour: Black (for different colours please ask our sales team)



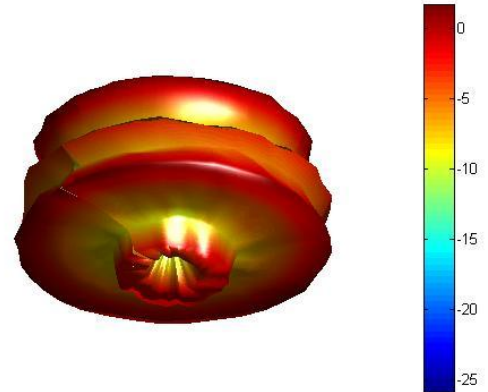
## 2. MEASUREMENT

- Connected straight on VNA S11 connector.

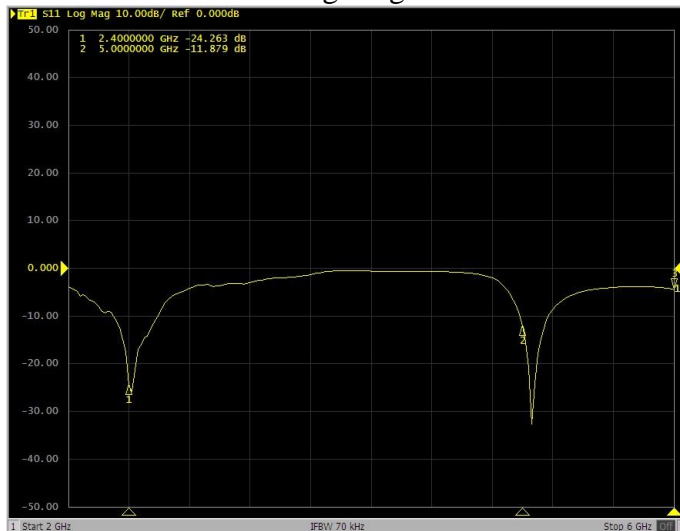
3D radiation pattern 2.4GHz  
 Freq = 2.4GHz Az= 45 EL= -45



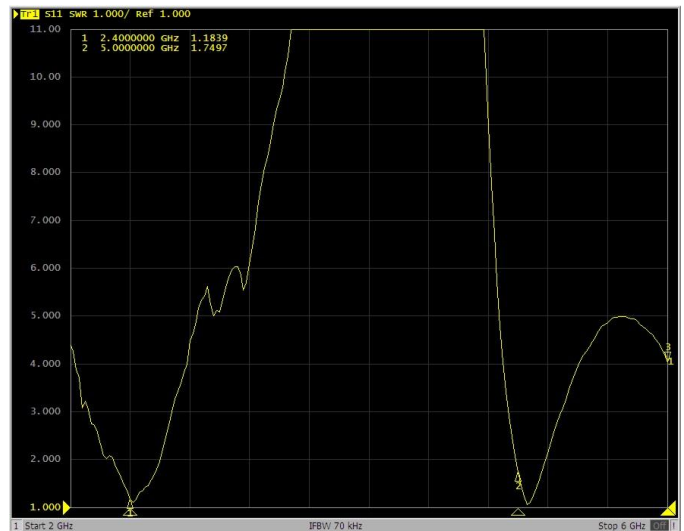
3D radiation pattern 5GHz  
 Freq = 5GHz Az= 45 EL= -45



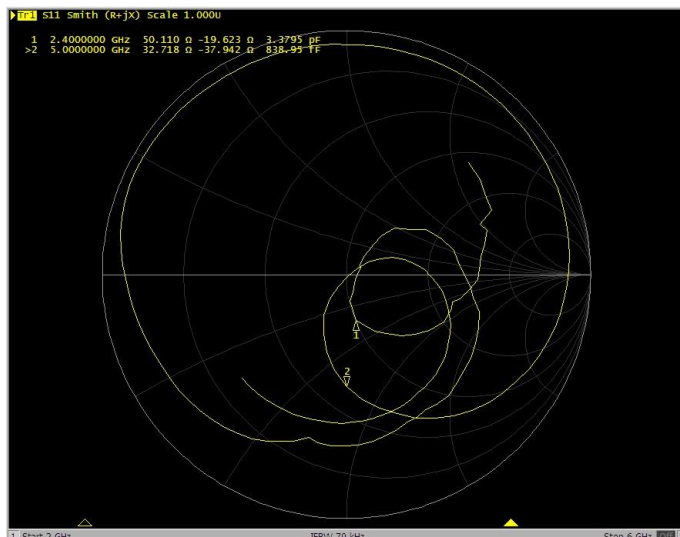
Log Mag



VSWR



Smith



### 3. IMAGES

