

# 2J540PCB

## (DATASHEET)

<b>Type</b>	Multiband antenna
<b>Frequencies</b>	AMPS (824-894 MHz) ISM (868 MHz) GSM (900 MHz) DCS (1800 MHz) PCS (1900 MHz) 3G (UMTS 2.1 GHz) WIFI / BLUETOOTH (2.4 GHz) LTE (790-860/2500-2690 MHz)
<b>Mounting</b>	Embedded Glass Mount Patch Mount
<b>Revision</b>	00



P. Tipul



D. Noble

# 1. SPECIFICATION

## 1.1. Electrical Specifications

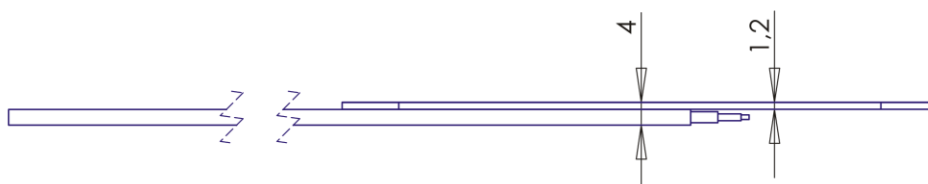
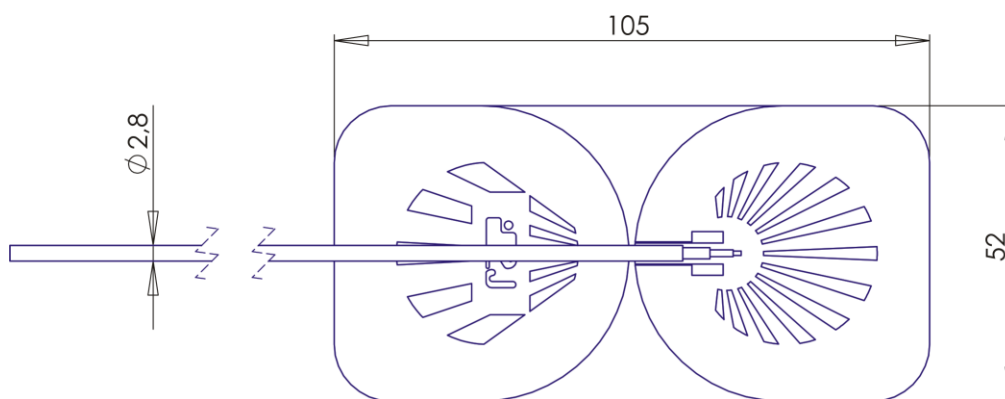
Frequencies	AMPS (824-894 MHz) ISM (868 MHz) GSM (900 MHz) DCS (1800 MHz) PCS (1900 MHz) 3G (UMTS 2.1 GHz) WIFI / BLUETOOTH (2.4 GHz) LTE (790-860/2500-2690 MHz)
Impedance	50 Ohms
Polarization	Linear
Gain	2.14dBi
VSWR	<2:1
Power handling	35W
Operating temperature	-40°C to +85°C

## 1.2. Connection Specifications

Cable type and connector are upon request.

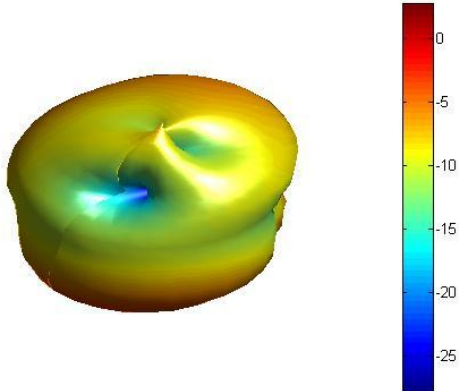
## 1.3. Mechanical Specifications and Dimensions

Material: FR4  
 Max. dimensions: 4 mm x 105 mm x 52 mm  
 Weight: 20.8 g 'weight with default connection'  
 Colour: Black (for different colours please ask our sales team)



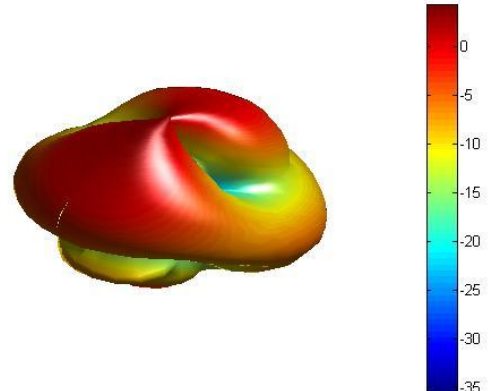
## 2. MEASUREMENT

3D radiation pattern 900MHz  
Freq = 0.9GHz Az= 45 EL= 45



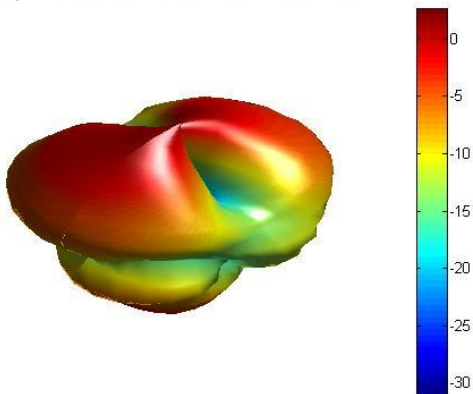
Tested without glass and with 30cm cable length.

3D radiation pattern 1800MHz  
Freq = 1.8GHz Az= 45 EL= 45



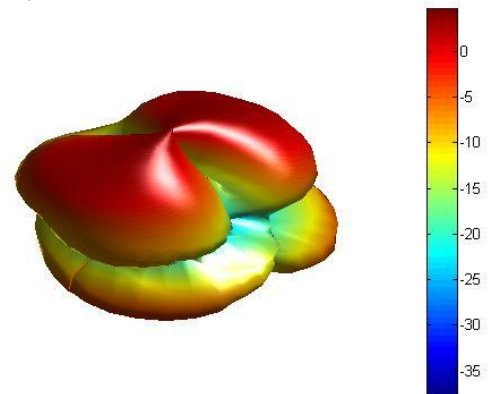
Tested without glass and with 30cm cable length.

3D radiation pattern 1900MHz  
Freq = 1.9GHz Az= 45 EL= 45



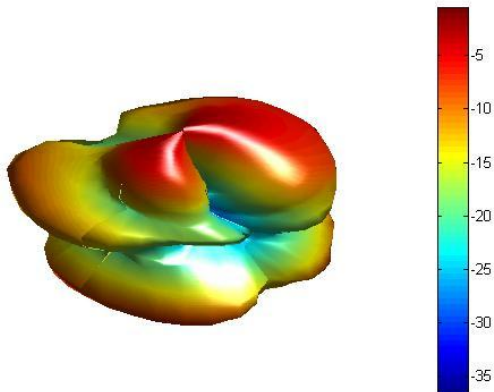
Tested without glass and with 30cm cable length.

3D radiation pattern 2100MHz  
Freq = 2.1GHz Az= 45 EL= 45



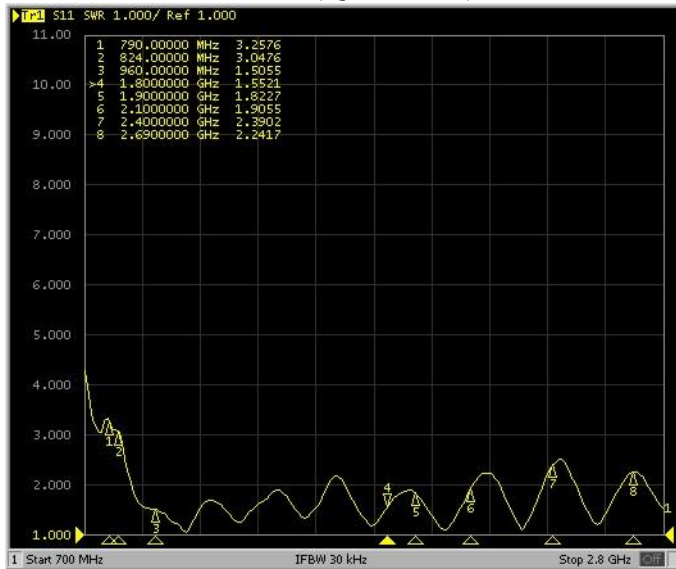
Tested without glass and with 30cm cable length.

3D radiation pattern 2400MHz  
Freq = 2.4GHz Az= 45 EL= 45



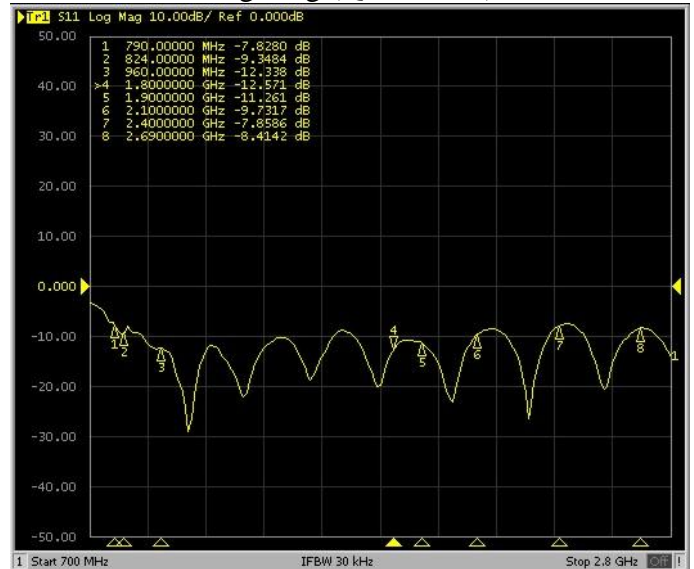
Tested without glass and with 30cm cable length.

VSWR (Quad Band)



Tested on glass and with 30cm cable length.

Log Mag (Quad Band)



Tested on glass and with 30cm cable length.

### 3. IMAGES

