



SERIES 1941 - SINGLE-POLE ROCKER SWITCHES IP 50

TO 12 (8) A 250 V AC 1E4



PRODUCT FEATURES

- Single-pole rocker switch
- High dust protection with IP 50
- 100 million times proven switching principle
- Appliance cut-out same as basic type 1801

ON REQUEST

- Other colors
- Other printing variants
- Other terminal variants
- PVC - protection cap
- With approval mark

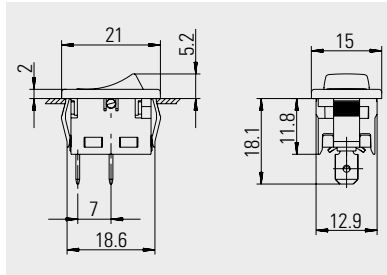
Mechanical life endurance	1E5 5E4 (normally open contact)
Contact resistance (new condition)	< 100 mOhm (1 A 12 V DC)
Insulation resistance (new condition)	> 100 MOhm (500 V DC)
Proof tracking	250 PTI
Protection type	IP 40
Ambient temperature	terminal side -20 °C ... +100 °C ... +125 °C (product-dependent) actuating side -20 °C ... +55 °C
Flammability	UL 94 V-2
Glow wire test temperature	850 °C
Material actuator housing	PA PA / PA glass fiber-reinforced
Plug force of the terminals	≤ 80 N
Suitable for appliances of protection class II	



SERIES 1941 - SINGLE-POLE ROCKER SWITCHES IP 50

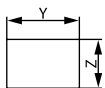
TO 12 (8) A 250 V AC 1E4

single-pole	Actuator color / printing		12 (8) A 250 V AC 1E4	8 (8) A 250 V AC 5E4	6 (4) A 250 V AC 5E4	6 (2) A 250 V AC 5E4	Terminal type	Terminal description	Contact distance (mm)	Contact material	Inrush current (capacitive) (A)	Miscellaneous	Stock version
ON / OFF switch (SPST)													
1941.1102								4.8	≥ 3	Ag	50	without approval mark	
1941.1103								4.8	≥ 3	Ag	50	0 at On-position	
1941.1105								4.8	≥ 3	Ag	50		
Normally open contact (SPNO)													
1941.1203								4.8	≥ 3	Ag		0 at On-position	



Basic type 1941
single-pole

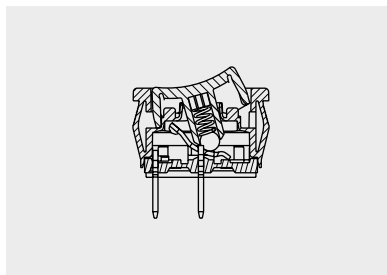
Quick-connect terminal 4.8 x 0.8



X = Wall thickness

x	y	z
0.75 ... 1.25	19.2 ^{-0.1}	12.9 ^{+0.1}
1.25 ... 2	19.4 ^{-0.1}	12.9 ^{+0.1}

Housing with internal meander and a hole underneath the snap-on mechanism for IP 50. Switching system is dust- and waterproof.



Sectional drawing

ROCKER SWITCHES
PUSHBUTTON SWITCHES
TOGGLE SWITCHES
SLIDE SWITCHES
ROTARY SWITCHES
FOOT SWITCHES
TACT AND KEY SWITCHES
SNAP-ACTION SWITCHES
MICRO-SIGNAL SWITCHES
SENSORS
ECO
PUSH N DRIVE

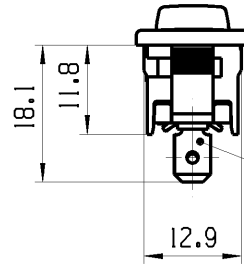
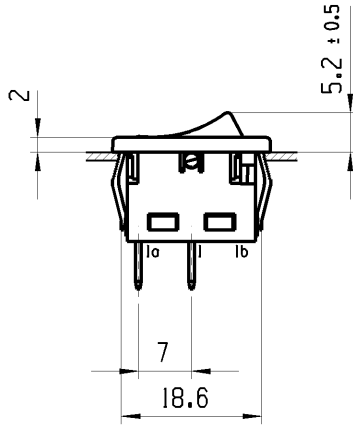
THIS DRAWING IS THE EXCLUSIVE PROPERTY OF MARQUARDT. WITHOUT THEIR CONSENT IT MAY NOT BE REPRODUCED OR GIVEN TO THIRD PARTIES.

CONFIDENTIAL

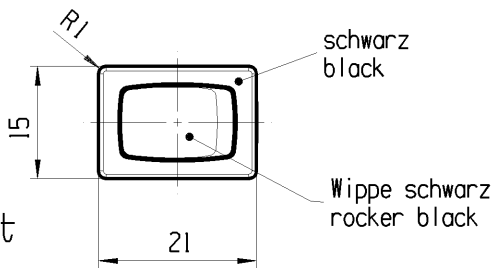
VERTRAULICH

Alle Rechte bei Marquardt, auch fuer den Fall von Schutzrechtsanmeldungen. Jede Veruegungsbefuegnis, wie Kopier- und Weitergaberecht, bei uns.

1	2	3	4
Empfohlener Ausschnitt fuer Rastbefestigung (Grat gegenueber Bestueckungsseite) recommended cut-out for snap-in fixing (ledge opposite to snap-in direction)	Wanddicke wall thickness	Ausschnittlaenge length of cut-out	Ausschnittbreite width of cut-out
	0.75 to / bis 1.25 1.25 to / bis 2	19.2 ^{-0.1} 19.4 ^{-0.1}	12.9 ^{+0.1} 12.9 ^{+0.1}



Flachstecker aehnlich
plug-in sim.
DIN 46 244-A4.8-0.8

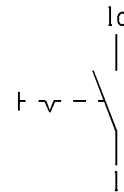


Aufschrift
Marking



194..
8(81)/250 ~ 5E4
12(81)/250 ~
T125/55

15A 125-250V AC
1/2 HP 125V AC
1 1/2 HP 250V AC



Ausschalter 1-polig

Fuer Gerate der Klasse II geeignet
(Angabe gilt fuer den eingebauten Zustand)

SPST

suitable for appliances of class II
(remark applicable for mounted state)

Herstellort/-jahr/-woche nach DIN EN 60062
code of manufacture: place/year/week acc. to DIN EN 60062

fuer Form und Lage FOR SHAPE AND LOC.	☉ =	Allgemeintoleranzen UNTOLERANCED DIMENSIONS				Pause COPY	Blatt SHEET 01	TYP K	Zeichn./DRAWING NO. 19411102	Index
fuer Winkel FOR ANGLE ± 2		PROJEKTION	Abmasse und Nennmassbereiche Angaben in mm	Laenge LENGTH	Radien RADII					
			ALL DIMENSIONS ARE IN MILLIMETRES	0-6 ± 0.15 ± 0.2 >6-15 ± 0.2 ± 0.3 >15-30 ± 0.25 ± 0.5 >30-70 ± >70-120 ± >120-200 ±	± 10%					
						CAD: NX v4.0				
						gez./DRAWN BY 15.01.09 MUT				
						gepr./CHECKED BY				
Ausg. ISSUE	Aenderung REVISION	gez. DRAWN BY	Ausg. ISSUE	Aenderung REVISION	gez. DRAWN BY	Ersatz fuer/REPLACEMENT OF		 MARQUARDT		
61734	12.05.09	MUT								