

81665-3 ✓ ACTIVE

AMP | AMP CPC

TE Internal #: 81665-3

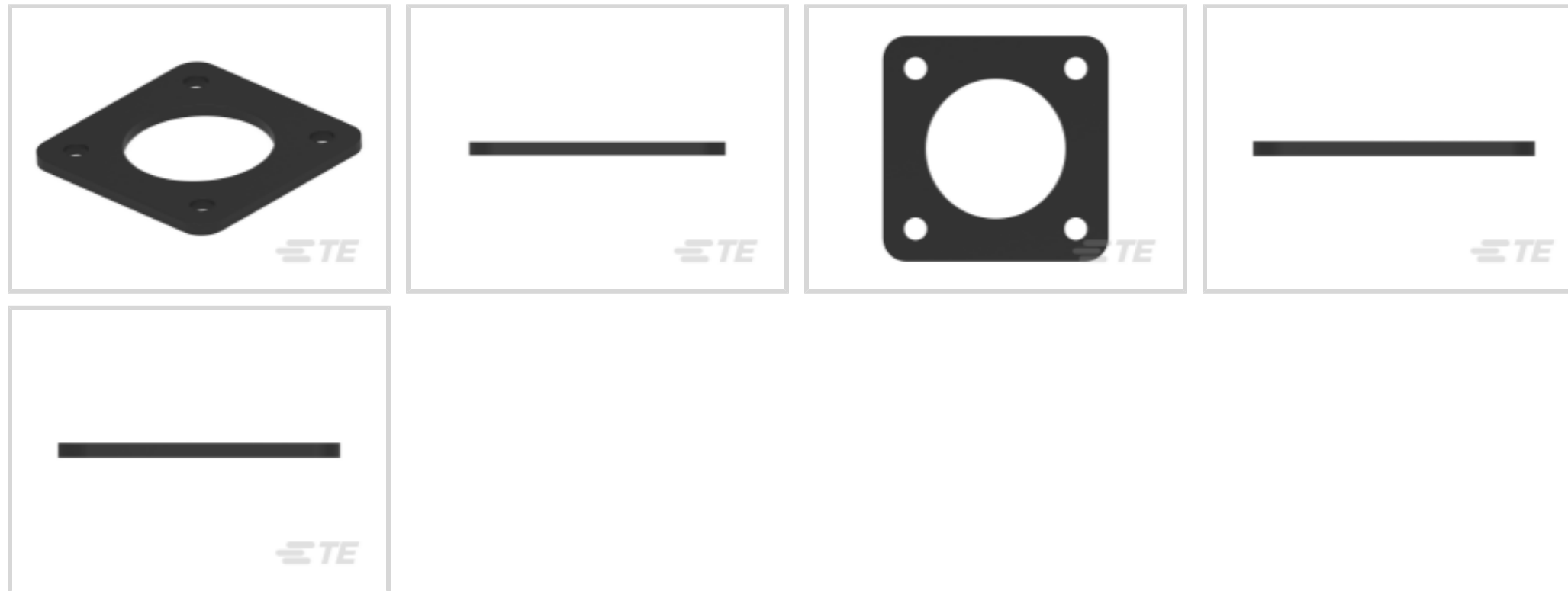
Circular Connector Seals, Flange Seal, -55 – 105 °C [-67 – 221 °F],

Black, AMP CPC

[View on TE.com >](#)



Connectors > Circular Connectors > Circular Connector Accessories > Circular Connector Seals > CPC Sealed Accessories



Connector Seal & Plug Type: **Flange Seal**

Operating Temperature Range: -55 – 105 °C [-67 – 221 °F]

Primary Product Color: **Black**

Operating Temperature (Max): 105 °C [221 °F]

[All CPC Sealed Accessories \(5\)](#)

Features

Product Type Features

Connector Seal & Plug Type	Flange Seal
----------------------------	-------------

Body Features

Primary Product Color	Black
-----------------------	-------

Usage Conditions

Operating Temperature Range	-55 – 105 °C[-67 – 221 °F]
-----------------------------	----------------------------

Operating Temperature (Max)	105 °C[221 °F]
-----------------------------	----------------

Packaging Features

Packaging Quantity	1000
--------------------	------

Packaging Method	Box
------------------	-----

Product Compliance

[For compliance documentation, visit the product page on TE.com>](#)

EU RoHS Directive 2011/65/EU	Compliant
------------------------------	-----------

EU ELV Directive 2000/53/EC	Compliant
China RoHS 2 Directive MIIT Order No 32, 2016	No Restricted Materials Above Threshold
EU REACH Regulation (EC) No. 1907/2006	Current ECHA Candidate List: JUNE 2023 (235) Candidate List Declared Against: JAN 2022 (223) Does not contain REACH SVHC
Halogen Content	Not Yet Reviewed for halogen content
Solder Process Capability	Not applicable for solder process capability

Product Compliance Disclaimer

This information is provided based on reasonable inquiry of our suppliers and represents our current actual knowledge based on the information they provided. This information is subject to change. The part numbers that TE has identified as EU RoHS compliant have a maximum concentration of 0.1% by weight in homogenous materials for lead, hexavalent chromium, mercury, PBB, PBDE, DBP, BBP, DEHP, DIBP, and 0.01% for cadmium, or qualify for an exemption to these limits as defined in the Annexes of Directive 2011/65/EU (RoHS2). Finished electrical and electronic equipment products will be CE marked as required by Directive 2011/65/EU. Components may not be CE marked. Additionally, the part numbers that TE has identified as EU ELV compliant have a maximum concentration of 0.1% by weight in homogenous materials for lead, hexavalent chromium, and mercury, and 0.01% for cadmium, or qualify for an exemption to these limits as defined in the Annexes of Directive 2000/53/EC (ELV). Regarding the REACH Regulation, the information TE provides on SVHC in articles for this part number is based on the latest European Chemicals Agency (ECHA) 'Guidance on requirements for substances in articles' posted at this URL: <https://echa.europa.eu/guidance-documents/guidance-on-reach>

Compatible Parts



TE Part # CAT-AM71-C83998Y
One-Piece Connector, Sealed, CPC Series 1



TE Part # CAT-AM71-C83998K
Circular Connector, Environmentally Sealed, CPC Series 6

Also in the Series | AMP CPC



Circular Connector Adapters(7)



Circular Connector Caps & Covers(16)



Circular Connector Hardware(3)



Circular Connector Keying Plugs(2)



Circular Connector Seals(36)



Circular Power Connectors(459)



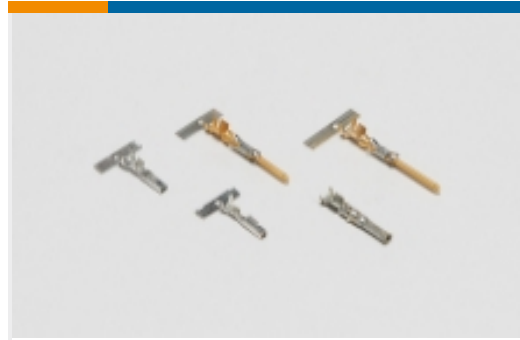
Connector Backshells(56)



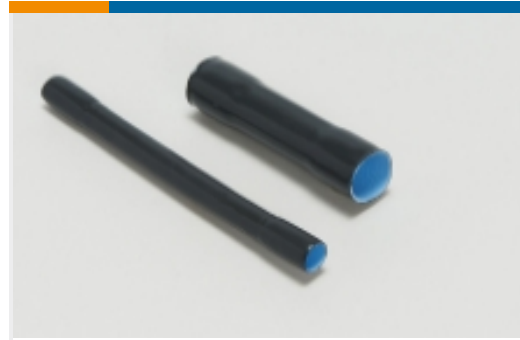
Connector Strain Relief(6)



Insertion & Extraction Tools(1)



Power Contacts(6)



Sealing Sleeves(2)

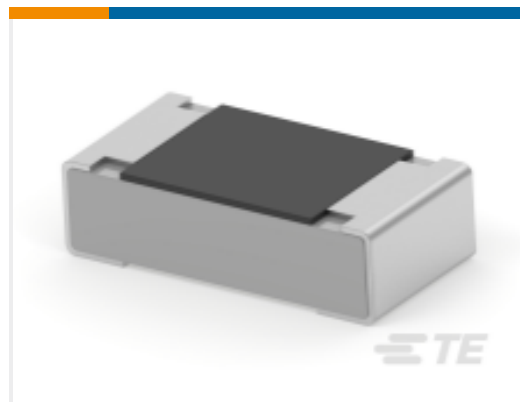
Customers Also Bought



TE Part #206061-2
Circular Connector, Environmentally Sealed, CPC Series 6



TE Part #1-1623728-6
BCHE 11 W 330R 5%



TE Part #2176340-4
CRGCQ 0603 3R3 5%



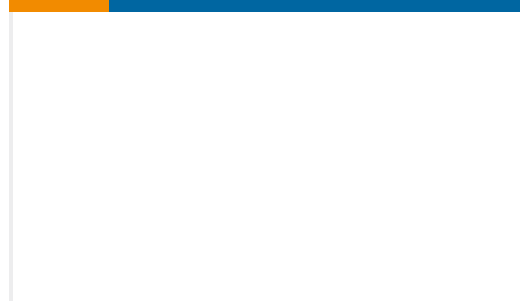
TE Part #3-2176412-0
5W XSM M/OX 5% 82R



TE Part #F67507-000
HW-381191-5-9



TE Part #ER2139-000
HT-CT-50M-3/32-OUT-0



TE Part #2-1825027-4
FSMRA8JHA04=R/A,TACT PB SW,260



TE Part #2267473-1
SIZE 11 PERIPHERAL SEAL, CPC



TE Part #5-1393238-0
RTC14024

Documents



Product Drawings

[ECONOSEAL, FLANGE GASKET](#)

English

CAD Files

[3D PDF](#)

English

Customer View Model

[ENG_CVM_81665-3_C.2d_dxf.zip](#)

English

Customer View Model

[ENG_CVM_81665-3_C.3d_igs.zip](#)

English

Customer View Model

[ENG_CVM_81665-3_C.3d_stp.zip](#)

English

[3D PDF](#)

3D

Customer View Model

[ENG_CVM_CVM_81665-3_E.2d_dxf.zip](#)

English

Customer View Model

[ENG_CVM_CVM_81665-3_E.3d_igs.zip](#)

English

Customer View Model

[ENG_CVM_CVM_81665-3_E.3d_stp.zip](#)

English

By downloading the CAD file I accept and agree to the [Terms and Conditions](#) of use.

Datasheets & Catalog Pages

[AMP Circular Connectors for Commercial Signal & Power Applications](#)

English

Product Specifications

[Application Specification](#)

English