

Han 3 HC 350/650 Y-Contact male insert

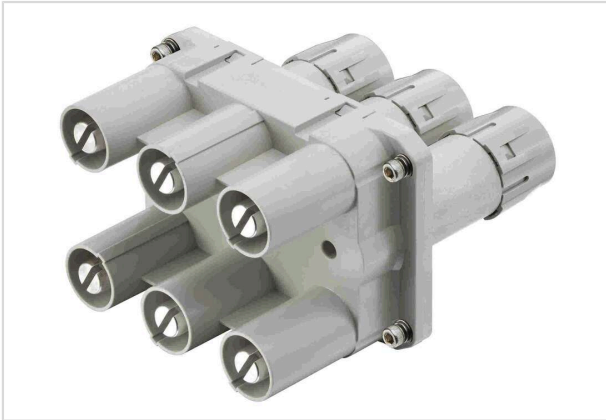


Image is for illustration purposes only. Please refer to product description.

Part number	09 11 003 3081
Specification	Han 3 HC 350/650 Y-Contact male insert
HARTING eCatalogue	https://harting.com/09110033081

Identification

Category	Accessories
Type of accessory	Y-distributor
Description of the accessory	Han® HPR PYD

Version

Gender	Male
Number of contacts	6

Technical characteristics

Conductor cross-section (mm ²)	120 mm ²
Input current	390 A
Output current	180 A
Rated voltage	4,000 V
Pollution degree	3
Overvoltage category	II
Insulation resistance	>10 ¹⁰ Ω
Contact resistance	≤0.6 mΩ
Tightening torque	4 Nm Fixing screws M5
Limiting temperature	-40 ... -125 °C
Mating cycles	≥500



Pushing Performance
Since 1945

Material properties

Material (insert)	Polycarbonate (PC) Polyamide (PA)
Colour (insert)	RAL 7032 (pebble grey)
Material (contacts)	Copper alloy
Surface (contacts)	Silver plated
Material flammability class acc. to UL 94	V-0
RoHS	compliant
ELV status	compliant
China RoHS	e
REACH Annex XVII substances	Not contained
REACH ANNEX XIV substances	Not contained
REACH SVHC substances	Yes
REACH SVHC substances	Potassium 1,1,2,2,3,3,4,4,4-nonafluorobutane-1-sulphonate
Fire protection on railway vehicles	EN 45545-2 (2020-08) + A1 (2023-10)
Requirement set with Hazard Levels	R22 (HL 1-3) R23 (HL 1-3)

Commercial data

Packaging size	1
Net weight	1,580 g
Country of origin	China
European customs tariff number	85366990
GTIN	5713140194892
eCl@ss	27440392 Connector (accessories)
ETIM	EC002939
UNSPSC 24.0	39121400