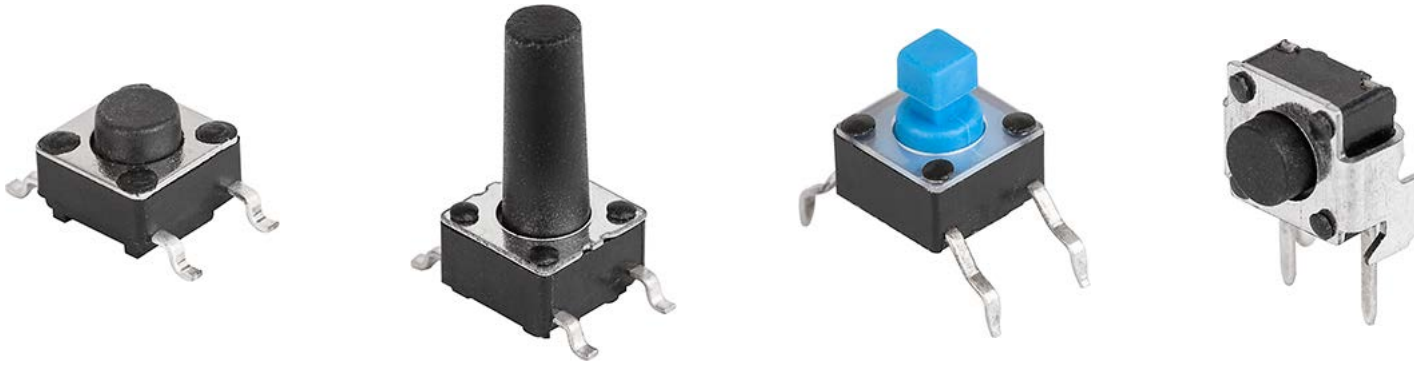


SMD Switch, Short Stroke, 6 mm Horizontal Actuator



Weblinks

[html-datasheet](#), [General Product Information](#), [CE declaration of conformity](#), [RoHS](#), [CHINA-RoHS](#), [e-Shop](#), [CAD-Drawings](#), [Product News](#), [Detailed request for product](#)

All Variants

Description	Order Number
LSH 6X6 SHORT TRAVEL SWITCH 4.3MM	1301.9314

Most Popular.

Availability for all products can be searched real-time:<http://www.schurter.com/en/Stock-Check/Stock-Check-SCHURTER>

DATA LSH, LPH, LPS, LPV, SMS, PMS, MTG SWITCHES – MOMENTARY ACTION



BENEFITS

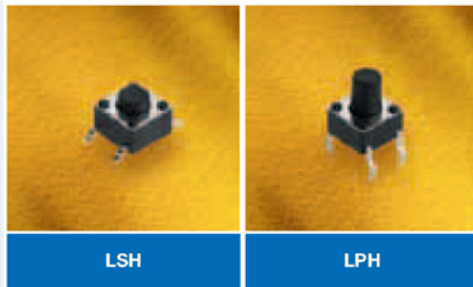
- Simple assembly, long life time, short lead time
- Reliable tactile feedback
- Various designs with 1/4 and 1/2 inch are possible with different heights
- Variable colour design and lettering
- Available for through hole and SMD assembly
- Tested to degree of protection IP 40 and IP 67

		LSH/LPH LPS/LPV	SMS	PMS	MTG	
Electrical data						
Contact material					gold	silver
Switching voltage max.	[V]	12 DC	30 AC / 42 DC	30 AC / 42 DC	max. 24 DC	max. 48 DC
Switching current max.	[mA]	50	50	50	max. 50	max. 125
Rated breaking capacity	[W]		0.12	0.12	0.48	2.40
Lifetime (at rated breaking capacity)		> 10 ⁵	> 10 ⁵	> 10 ⁵	> 10 ⁶	> 10 ⁶
Initial contact resistance, new	[mΩ]	max. 100	< 50	< 50	< 50	< 50
Initial contact resistance, after lifetime	[mΩ]	max. 100	< 150	< 150	< 50	< 50
Insulation resistance	[mΩ]		> 10 ⁸	> 10 ⁸	> 10 ⁸	> 10 ⁸
Contact bounce time	[ms]	typ. 0.1	typ. 0.15	typ. 0.15	typ. 0.1	typ. 0.1
Mechanical data						
Actuating force	IP 40 [N]	1.6 ± 0.5	1.6 ± 0.4	1.6 ± 0.4	2.5 ± 0.5	2.5 ± 0.5
	IP 67 [N]		1.8 ± 0.4	1.8 ± 0.4		
Contact travel	[mm]	0.25 + 0.2 / -0.1	0.35 ± 0.1	0.35 ± 0.1	0.45 ± 0.1	0.45 ± 0.1
End stop strength	[N]	50 N/3s	> 100	> 100	> 50	> 50
Lifetime	[operations]	> 10 ⁵	> 10 ⁵	> 10 ⁶	> 10 ⁶	> 10 ⁶
Other data						
Degree of protection		IP 40	IP 40 / IP 67	IP 40 / IP 67	IP 40	IP 40
Soldering method		IR-Reflow	IR-Reflow	Wave	Wave	Wave
Soldering heat resistance	(LSH) IR Reflow [°C/s]	240/20				
	(LPV/LPS/LPH) [°C/s]	260/3				
	Jedec J-STD-020C		245/5	248,5/1	248,5/1	248,5/1
Ambient temperature	[°C]	-20 – +70	-40 – +85	-40 – +85	-25 – +85	-25 – +85
Storage temperature	[°C]	-30 – +85	-40 – +85	-40 – +85	-25 – +85	-25 – +85
Cleaning agent proof			Zestron	Zestron		
Flux - proof			IP67	IP67		
Materials						
Sealing membrane IP 67			VMQ		VMQ	
Contact material gold			CuZn37 Ni + Au		CuZn -3µm Ni +2µm Au	
Contact material silver					CuZn -2.5µm Ag passivated	
Terminals		CuZn+Cu+Ag 0,7µm	CuZn37 - Sn			
Socket			Thermoplast PA 4.6		Thermoplast PES	
Actuator			Thermoplast PPS		Thermoplast PC	
Cover plate			X 12CrNi177			



OVERVIEW LSH, LPH

SWITCHES—MOMENTARY ACTION



FEATURES		LSH	LPH
Degree of protection		IP 40	IP 40
Models/Leads		Gullwing, height variable	Through hole, height variable
PART NUMBER *			
Actuator dimensions			
2.40 mm x 2.40 mm			
2.80 mm x 2.80 mm			
Actuator $\varnothing A$ / Overall height h			
3.50 mm / 3.85 mm			
** 3.40 mm / 4.30 mm	1301.9314.xx		1301.9301
3.40 mm / 5.00 mm	1301.9315.xx		1301.9302
3.30 mm / 6.15 mm			
3,30 mm / 7.00 mm	1301.9316.xx		1301.9303
3.30 mm / 7.30 mm	1301.9317.xx		1301.9304
3,30 mm / 8.00 mm	1301.9318.xx		1301.9305
3.20 mm / 9.50 mm	1301.9319.xx		1301.9306
3.00 mm / 11.35 mm			
3,40 mm / 12.50 mm	1301.9320.xx		1301.9307
Packaging			
loose in boxes			
taped and reeled		24	
Dimensions:			
Solder pads: Drilling diagram:			
Circuit diagram:			

* X in the Part No. must be replaced by the desired version

** Not recommended for use with an additional actuator cap