

2J2115K-868-B07H

(DATASHEET)

Type	Wall mount ISM antenna
Frequencies	ISM (868-875 MHz)
Mounting	Wall Mount
Revision	00



M. German

1. SPECIFICATION

1.1. *Electrical Specifications*

Mobile (Cable 1)

Frequencies	ISM (868-875 MHz)
Impedance	50 Ohms
Polarization	Vertical
Gain*	2.2 dBi Max
Power Handling	50 W
VSWR*	<2:1

*Stated when measured with 0,3m of RG58

1.2. *General Specifications*

Operating temperature	-40°C to +85°C
-----------------------	----------------

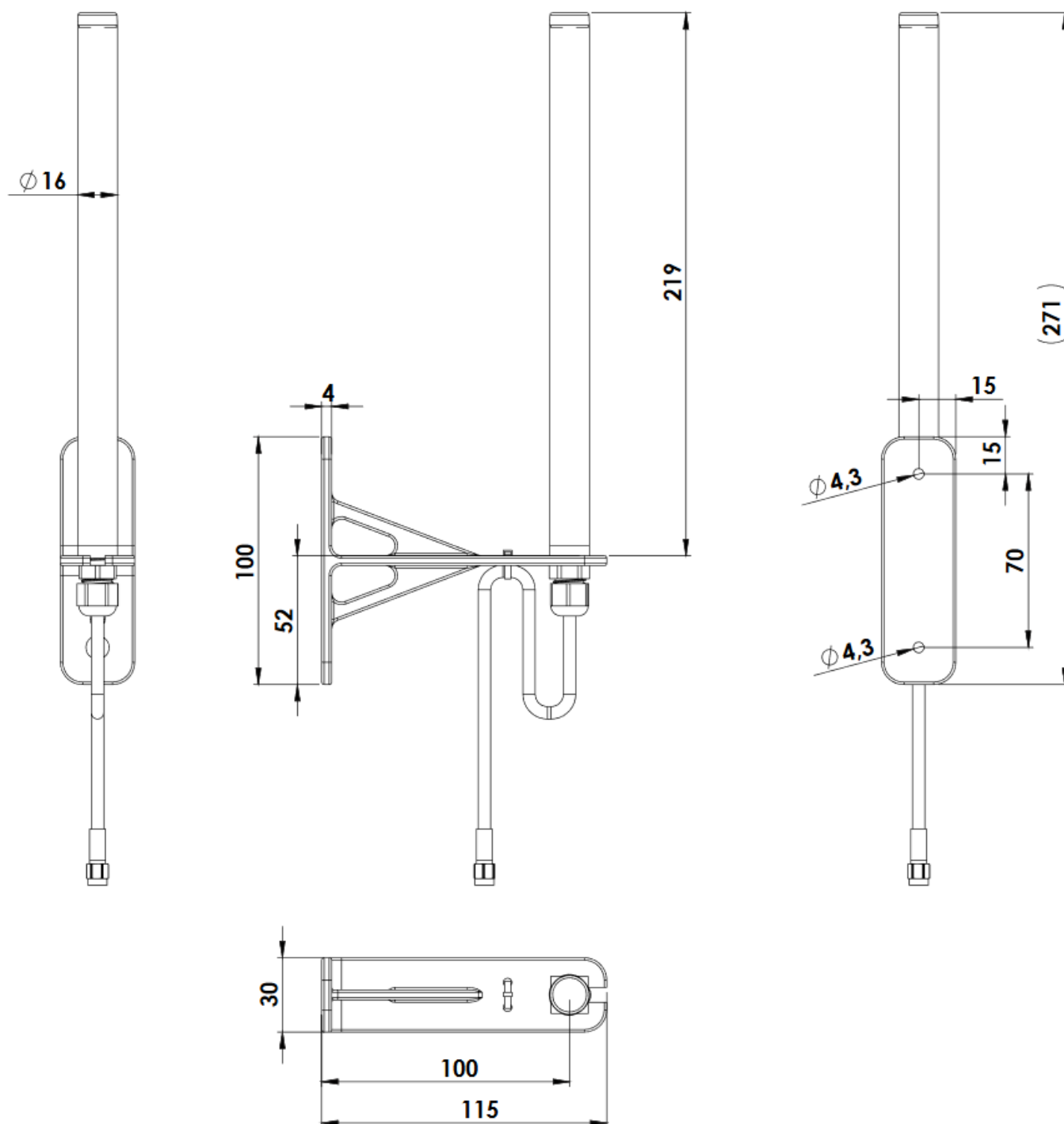
1.3. *Connection Specifications*

Connector type:	FME Male
Cable:	RG58
Cable length:	Upon request

For different cable length and connector type ask our sales team.

1.4. *Mechanical Specifications and Dimensions*

Material:	Radome: PC/ABS UV Stable / Bracket: PC/ABS UV Stable
Dimensions (mm):	271 × 30 × 115 (219 × Ø 16)
Color:	Black (for different colors please ask our sales team)



2. MEASUREMENT

- Measured with 30cm RG58 cable
- Free Space
- DAMS positioner with AUT and reference antenna are placed in Anechoic Chamber

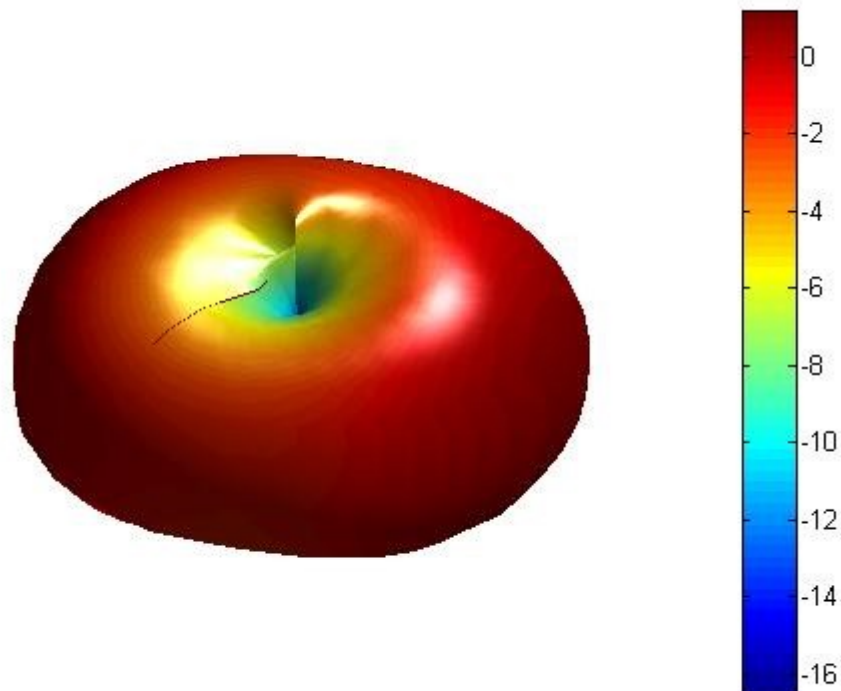
VSWR (ISM 868MHz)



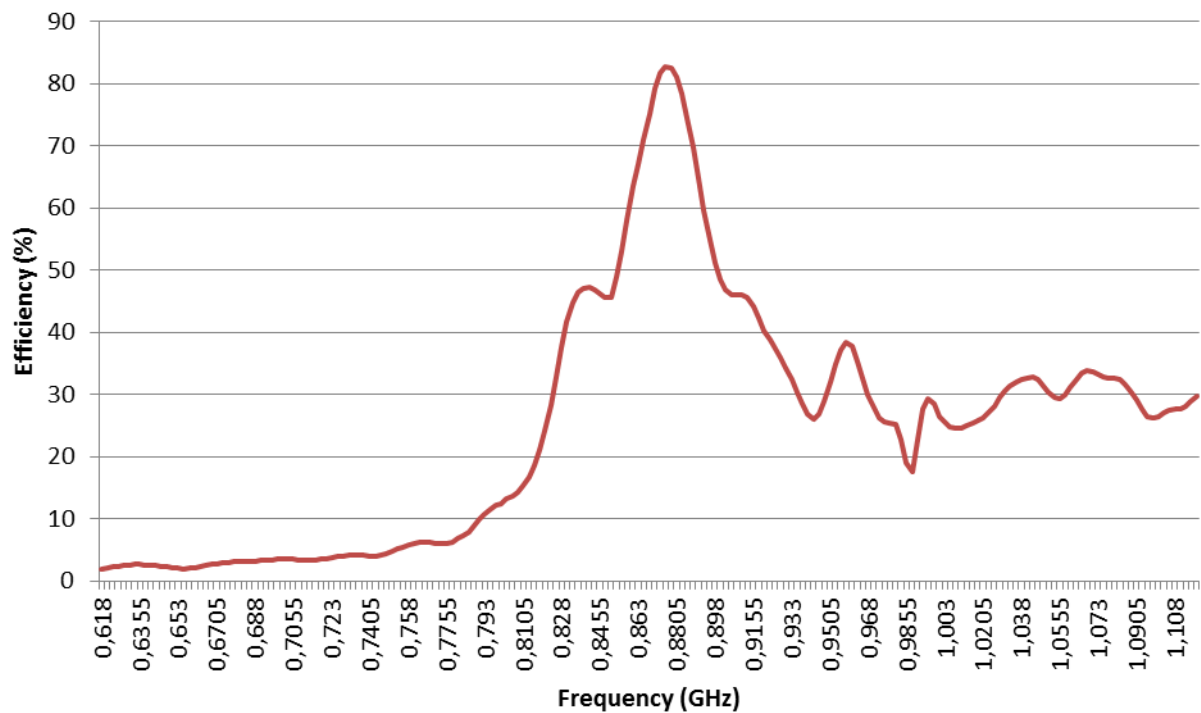
Log Mag (ISM 868MHz)



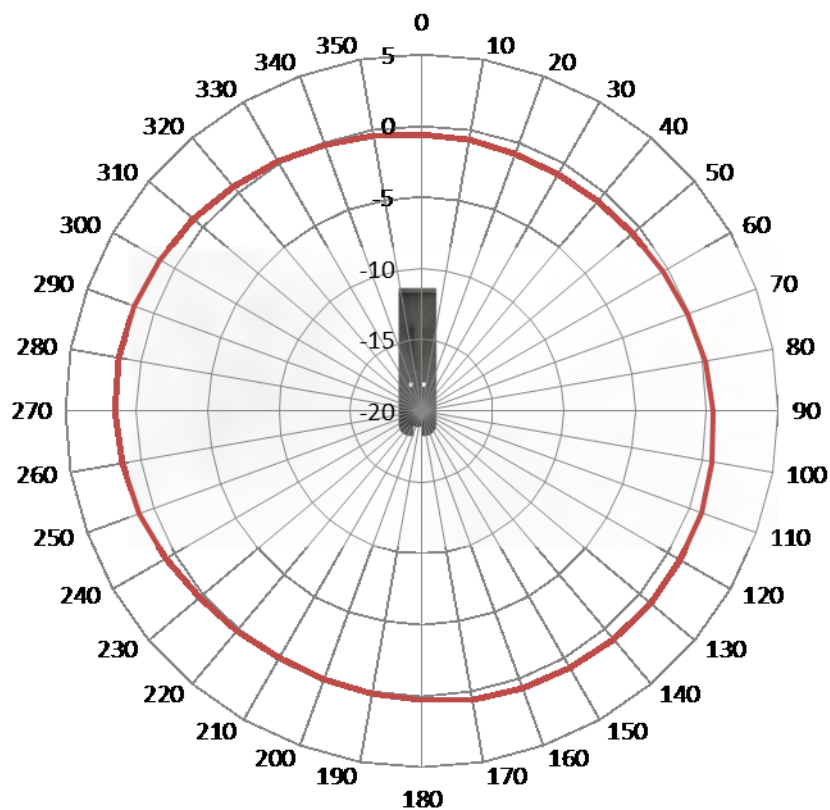
3D radiation pattern
 Freq = 0.8680GHz Az= 45 EL= 45



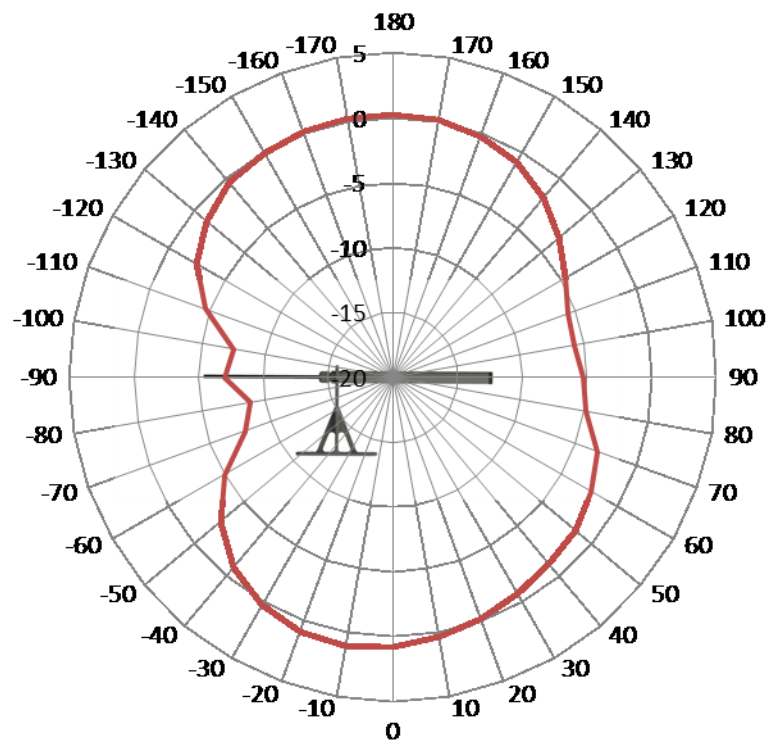
Efficiency



Azimuth cut



Elevation



3. IMAGES



