

Metal switch medium stroke, snap-in, Switching Voltage up to 250V



MSM 22 SI snap in mounting

Description

- Switches with snap-in mounting from the frontside
- Further characteristics see MSM 22 data sheet Available in version Standard, lettered, with Point Illumination or Ring Illumination

Characteristics

- Housing and actuator made of high quality stainless steel
- Quick Assembly by snap-in mounting from the front side
- Short Mounting Depth, for assembly with no access from rear side

References

Alternative: Standard version [MSM 16](#); [MSM 27](#)

Weblinks

[html-datasheet](#), [General Product Information](#), [CE declaration of conformity](#), [RoHS](#), [CHINA-RoHS](#), [CAD-Drawings](#), [Product News](#), [Detailed request for product](#)

Technical Data

Electrical Data

Data See MSM data sheet

Mechanical Data

Mounting	snap-in
Mounting Diameter	Ø 22 mm
Drilling tolerance	max. 0.15 mm / Drilling edges free of burrs
Panel Thickness	1.5; 2.0; 2.5; 3.0mm
Mounting Force	50 - 100 N
Data	See MSM data sheet

Climatical Data

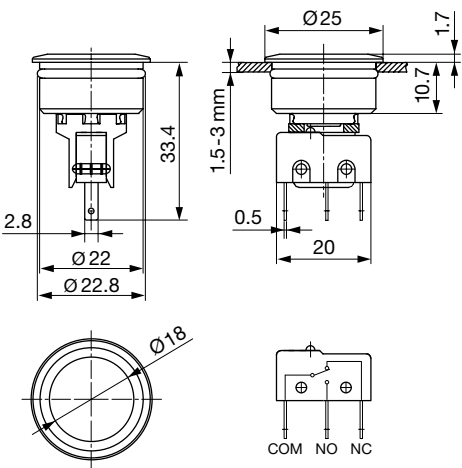
Data See MSM data sheet

Material

Housings	Stainless Steel
Gasket	NBR70

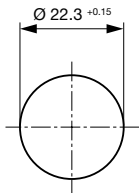
Dimension

MSM 22 SI



Dimension

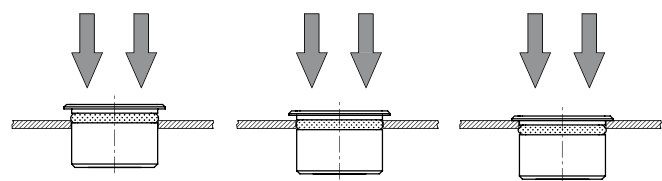
SI 22



Drilling diagram

Assembly Instructions

Mounting diagram



The assembly becomes effective by the force fitting of the switch into the drilling hole, whereas the O-ring will be displaced. After inserting the switch through the drilling hole, the O-ring expands and the switch is fixed in the drilling hole.

All Variants

Diameter	Switching Current	Switching Voltage	Illumination, LED	Housing Material	Panel Thick-	Config. Code	Order Number
[mm]	[A]	[VAC/ VDC]					
22	5 / 3 A	125 / 250 VAC	non-illuminated	Stainless Steel	1.5mm		1241.6695.1120000
22	5 / 3 A	125 / 250 VAC	non-illuminated	Stainless Steel	2mm		1241.6699.1120000

Legend:  
Type: MSM  
PI = Point Illumination  
RI = Ring Illumination  
Alu = Aluminium  
ES = Stainless steel

Point illuminated versions without resistors, details see MSM data sheet

Further snap-in versions and customer-specific solutions on request.  
Special materials for use in salt and chlorinated environment on request.

Most Popular.

Availability for all products can be searched real-time:<http://www.schurter.com/Stock-Check/Stock-Check-SCHURTER>

Packaging unit 10 in box with insert (10 pcs.)