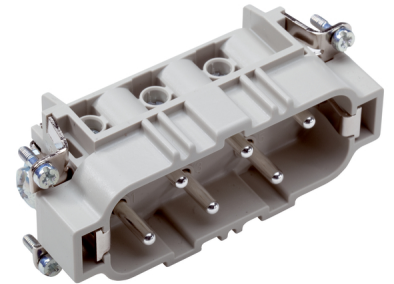


|                   |                      |  |
|-------------------|----------------------|--|
| U.I. Lapp<br>GmbH | <b>DATASHEET</b>     |  |
|                   | <b>EPIC® H-BS 12</b> | <b>10170000</b><br><b>14.11.2013</b>   |

Inserts for high currents.  
 High rating for currents up to 35 A  
 Screw termination up to a conductor cross section of 6 mm<sup>2</sup>  
 Two H-BS 6 inserts with different contact-numbering for one housing.



Industrial machinery and plant engineering



Robust



Temperature-resistant

#### Info

Standard insert for currents up to 35A

#### Application range

Plant engineering  
 Mechanical engineering  
 Drive systems

#### Remark

Photographs are not to scale and do not represent detailed images of the respective products.

|                    |                         |       |
|--------------------|-------------------------|-------|
| Product Management | Document: EPIC® H-BS 12 | 1 / 3 |
|--------------------|-------------------------|-------|

|                   |                      |  |
|-------------------|----------------------|--|
| U.I. Lapp<br>GmbH | <b>DATASHEET</b>     |  |
|                   | <b>EPIC® H-BS 12</b> | <b>10170000</b><br><b>14.11.2013</b>   |

### Technical Data

|                                |  |
|--------------------------------|--|
| Article:                       | H-BS 6 SS  |
| Version:                       | male   |
| Wire protection:               | yes  |
| Contacts:                      | 1 - 6  |
| Pieces / PU:                   | 5  |
| Rated voltage (V):             | IEC: 500 V<br>UL: 600 V<br>CSA: 600 V<br>Conductor - conductor: 690 V                    |
| Rated impulse voltage:         | 6 kV   |
| Rated current (A):             | IEC: 35 A<br>UL: 35 A<br>CSA: 35 A   |
| Contact resistance:            | < 2 mOhm   |
| Contacts:                      | Copper alloy, hard silver-plated   |
| Number of contacts:            | 12 + PE  |
| Termination methods:           | Screw termination: 0.5 - 6 mm <sup>2</sup>   |
| Cycle of mechanical operation: | 100  |
| Temperature range:             | -40 °C to +100 °C, short-term up to +125 °C  |
| VDE-tested:                    | Certified production control: VDE-REG. no.: B437<br>UL-tested:<br>UL File Number: E75770 |
| Degree of soiling:             | 3  |

|                    |                         |       |
|--------------------|-------------------------|-------|
| Product Management | Document: EPIC® H-BS 12 | 2 / 3 |
|--------------------|-------------------------|-------|

|                   |                      |  |
|-------------------|----------------------|--|
| U.I. Lapp<br>GmbH | <h1>DATASHEET</h1>   |  |
|                   | <b>EPIC® H-BS 12</b> | 10170000<br>14.11.2013   |

