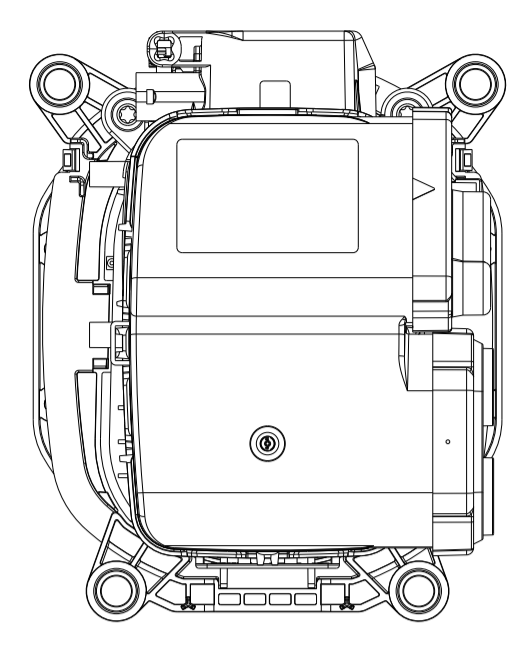
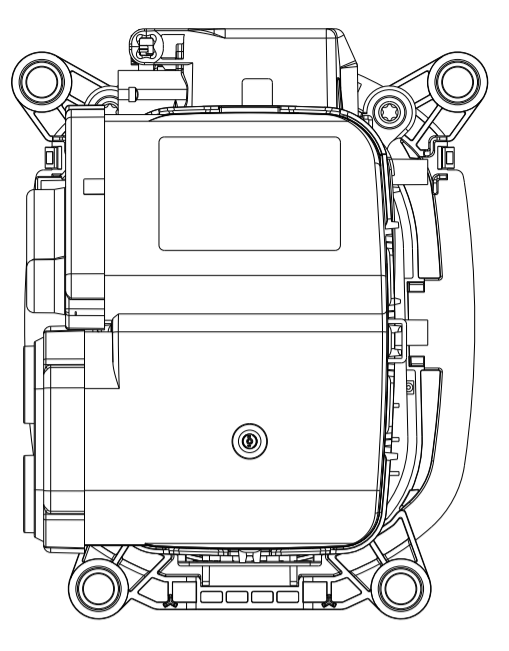


REVISIONS				
P	LTN	DESCRIPTION	DATE	APVD
A7		REVISED PER PCN-23-178661	15JUN2023	MK GL
A8		DRAWING UPDATE	24FEB2025	RK GL
D		REVISED PER PCN-26-270464	10FEB2026	MK GL
D1		TABLE UPDATE	10MAR2026	GP GL

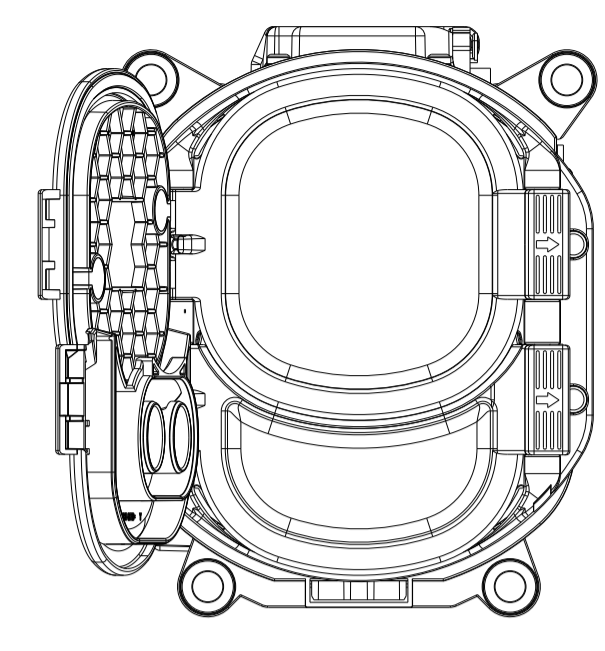
LOCKING UNIT POSITION UPPER CABLE OUTLET POSITION 1



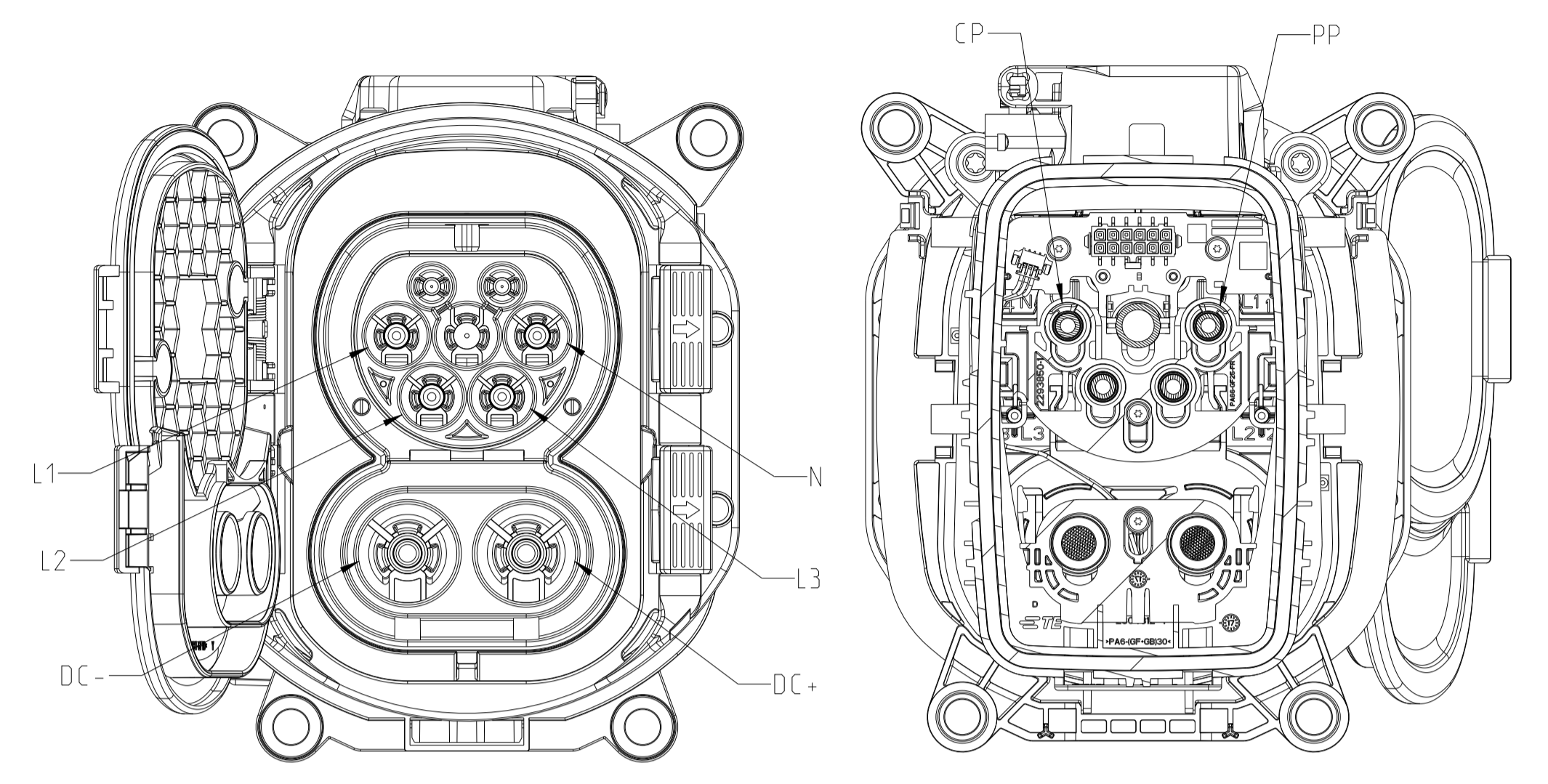
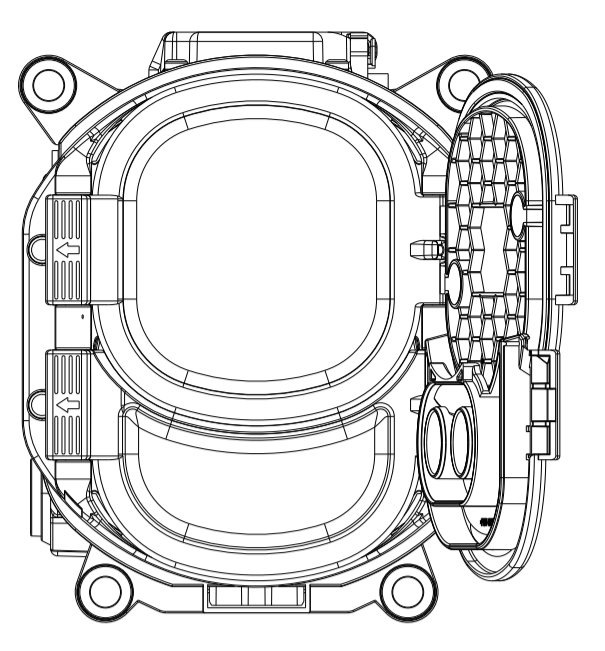
LOCKING UNIT POSITION UPPER CABLE OUTLET POSITION 2



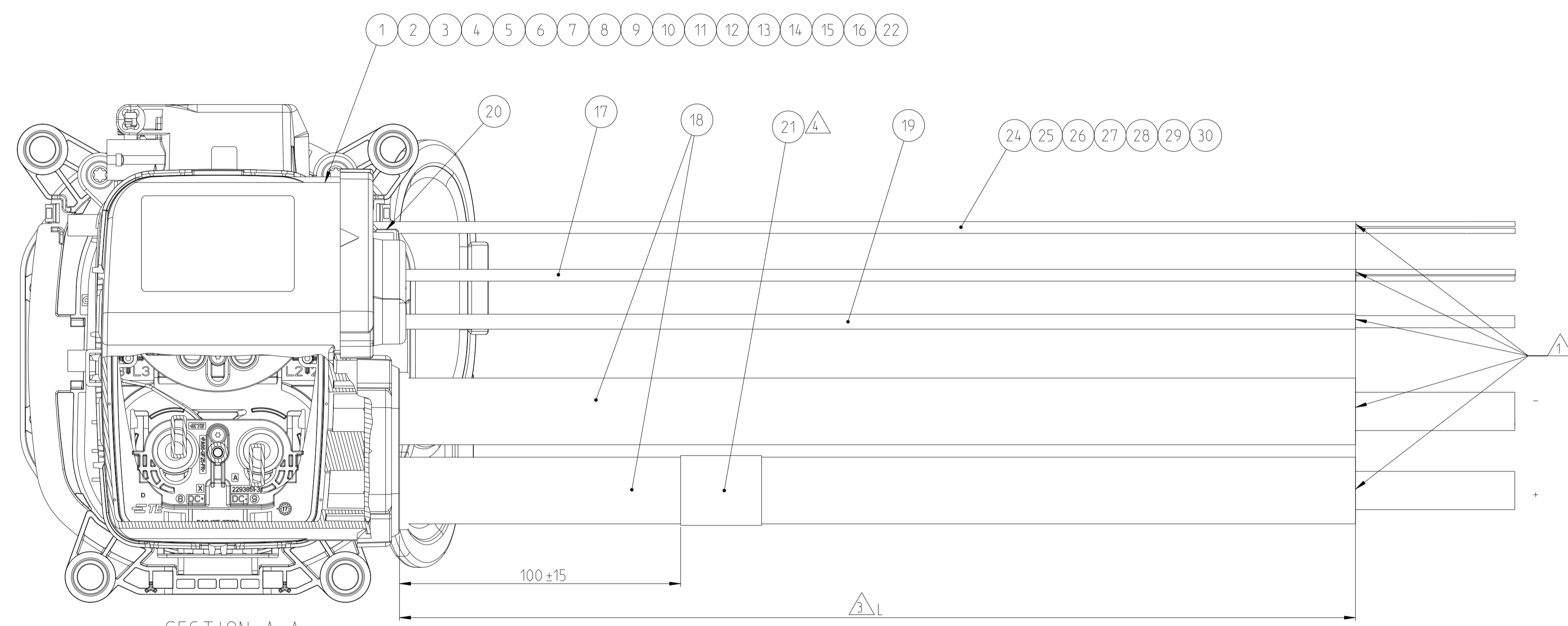
FLAPS OPEN LEFT



FLAPS OPEN RIGHT



0- -3 AS SHOWN wie dargestellt



SECTION A-A

WIRING SCHEDULE:
Belegungsplan:

CAVITY-NO.	IDENTIFICATION	WIRE COLOUR	WIRE SECTION
1	L1	BROWN	6mm ² (ITEM 17)
2	L2	BLACK	6mm ² (ITEM 17)
3	L3	GREY	6mm ² (ITEM 17)
4	N	BLUE	6mm ² (ITEM 17)
5	GROUND/EARTH	GREEN/YELLOW	25mm ² (ITEM 19)
8	DC +	ORANGE	70mm ² (ITEM 18)
9	DC -	ORANGE	70mm ² (ITEM 18)

NOTES

- STRIPPED ONLY OUTER JACKET AND BRAID. ELECTRICAL TESTING IS ACCORDING APPLICATION SPECIFICATION.
- APPLICATION SPECIFICATION: 114-94675 CHARGE INLET COMBO II IEC 62196-3.
- CUTTING LENGTHS TO BE FIXED BY MANUFACTURING.
- MANUFACTURING CODE: TE PART NO., CURRENT REV. LEVEL AND DATE CODE (DD.MM.YY). TO BE PRINTED ON LABEL (ITEM 21). LABEL TO BE APPLIED TO THE CABLE AFTER SUCCESSFUL ELECTRICAL TEST.
- FLAP ASSY (ITEM 15/16) WILL BE NOT MOUNTED AS SHOWN BUT ATTACHED INTO PACKAGING.

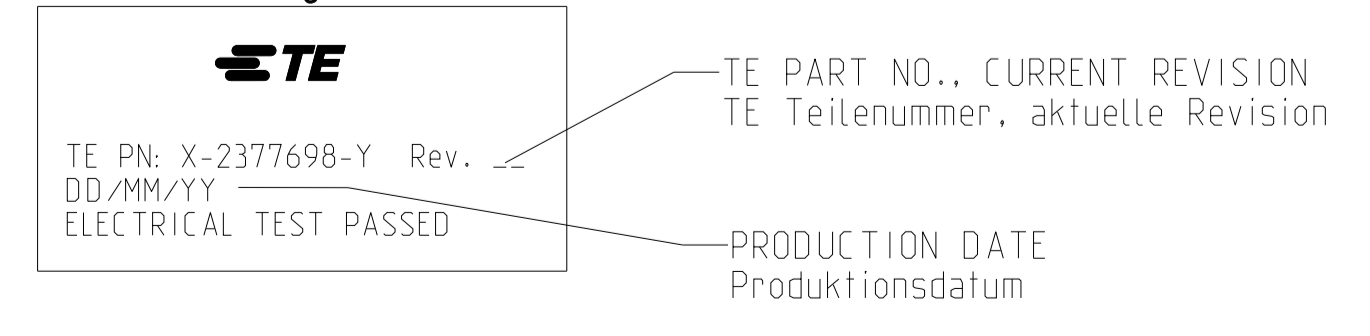
LENGTH SCHEDULE:
Laengentabelle:

TE PART NO	REV	LENGTH L[mm]	TOL	CABL. OUTLET POSITION	FLAP UNIT
2377698-1	D	1500	+30	POSITION 1	NO FLAPS
2377698-2	D	1500	+30	POSITION 2	NO FLAPS
2377698-3	D	1500	+30	POSITION 1	FLAPS OPEN LEFT
2377698-4	D	1500	+30	POSITION 2	FLAPS OPEN LEFT
2377698-5	D	1500	+30	POSITION 1	FLAPS OPEN RIGHT
2377698-6	D	1500	+30	POSITION 2	FLAPS OPEN RIGHT
1-2377698-1	D	3000	+50	POSITION 1	NO FLAPS
1-2377698-2	D	3000	+50	POSITION 2	NO FLAPS
1-2377698-3	D	3000	+50	POSITION 1	FLAPS OPEN LEFT
1-2377698-4	D	3000	+50	POSITION 2	FLAPS OPEN LEFT
1-2377698-5	D	3000	+50	POSITION 1	FLAPS OPEN RIGHT
1-2377698-6	D	3000	+50	POSITION 2	FLAPS OPEN RIGHT

WIRING SCHEDULE FOR SIGNAL CABLE:
Belegungsplan für Signalkabel:

Pin No.	Identification	Wire colour	Wire section
1	-	-	-
2	-	-	-
3	-	-	-
4	-	-	-
5	-	-	-
6	TDC+	OR	0.5mm ²
7	Proxi out	BU	0.5mm ²
8	TDC ground	GY	0.5mm ²
9	TDC-	RD	0.5mm ²
10	T AC	WH/BU	0.5mm ²
11	PE S	BK	0.5mm ²
12	CP out	VD	0.5mm ²

LABEL LEGEND:
Label Beschriftung:



QTY	REDD	PER	ASSY	DESCRIPTION	ITEM NO.									
30				SIGNAL CABLE	30									
29				SIGNAL CABLE	29									
28				SIGNAL CABLE	28									
27				SIGNAL CABLE	27									
26				SIGNAL CABLE	26									
25				SIGNAL CABLE	25									
24				SIGNAL CABLE	24									
23				12POS.MICRO MNL.RCPT HSG	23									
22				TERMINAL MICRO MATE N LOCK	22									
21				LABEL. HELL	21									
20				CAB TIE. CLIP. HELL-T18R-HR-N46	20									
19				PE H&S CABLE 25 SQMM	19									
18				70 mm ² Huber-Suhner	18									
17				4x6 mm ² Coroplast	17									
16				FLAP. ASSY. INLET COMBO 2, RIGHT	16									
15				FLAP. ASSY. INLET COMBO 2, LEFT	15									
14				MDS BLINDSTOPFEN	14									
13				COVER. CABLE SEAL. COMBO DC	13									
12				FAMILY SEAL. COMBO DC	12									
11				COVER. CABLE SEAL. AC	11									
10				STRAIN RELIEF. AC	10									
9				Family Seal. AC	9									
8				CABLE EXIT. RECT. COMBO RIGHT	8									
7				CABLE EXIT. RECT. COMBO. LEFT	7									
6				DIA 6MM.PIN TERMINAL	6									
5				SEALING	5									
4				PROTECTION CAP CHARGE INLETS	4									
3				PIN DIA 6.0.RIGID.POWER PE	3									
2				DIA 6MM.PIN TERMINAL	2									
1				COMBO 2.CHARGE INLET ASSY.WITHOUT LED	1									
1-6	1-5	1-4	1-3	1-2	1-1	0-6	0-5	0-4	0-3	0-2	0-1	REV.	DESCRIPTION	ITEM NO.
D	D	D	D	D	D	D	D	D	D	D	D	D	REVISION OF EACH ASSY NO (WHEN BLANK, USE DWG REVISION)	

THIS DRAWING IS A CONTROLLED DOCUMENT.

OWNER: CHANDRAKANTH
DATE: 10SEP2020

CHM: M. BLOCK
DATE: 10SEP2020

APVD: G. LINDEMANN
DATE: 10SEP2020

NAME: CHARGING INLET CCS2. CABLE ASSY

SIZE: 114-94675
CAGE CODE: 00779
DRAWING NO: 00779
SCALE: 5:1

RESTRICTED TO: 1 OF 1

CUSTOMER DRAWING