

# NANO MODULE MIFARE

## 13.56MHz Contactless Reader/Writer



Elatec's Nano Module MIFARE is designed for integration into machines, handheld computer or any other device. The focus has especially been set on size, price and flexibility.

Thanks to its compact dimensions, integration directly on a PC board is possible.

Unique features are: 4 user configurable ports (to be configured as input or output), beeper support and different sleep modes for lowest power consumption. The simple ASCII or binary protocol enables quick software development cycles. All host communication is done via serial TTL interface.

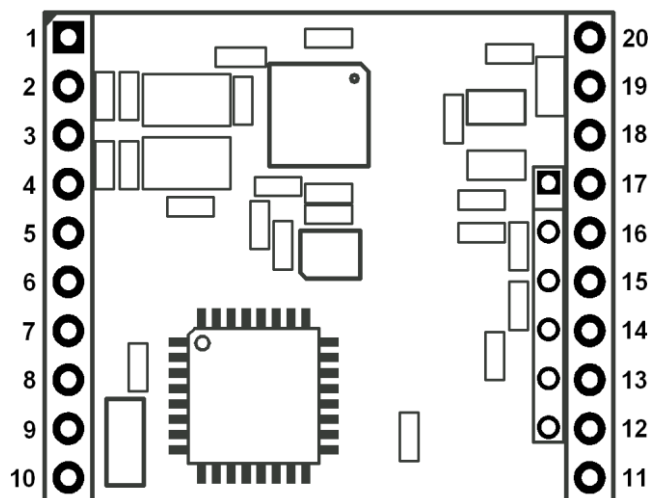
## Technical Data

Housing	without
Frequency	13.56 MHz
Dimensions (L x W x H)	30.48mm x 25.40mm x 4mm / 1.20inch x 1.00inch x 0.14inch
Power Supply	3.15 – 5.5 V DC
Current Consumption	Power down: < 300µA RF field off: 2mA RF field on: typically 80mA, depending on antenna
Temperature Range	Operating: -25°C up to +80°C (-13°F up to +176°F) Storage: -40°C up to +85°C (-40°F up to +185°F)
Relative Humidity	5% to 95% non-condensing
Antenna	To be connected externally
Read- / Write Distance	Proximity, depending on antenna and tag
Supported Transponders	<ul style="list-style-type: none"> <li>▪ ISO14443A</li> <li>▪ MIFARE: Classic 1k &amp; 4k, Classic 1k &amp; 4k EV1<sup>4)</sup>, DESFire EV1<sup>1)</sup>, Mini, Plus S<sup>2)</sup>, X<sup>2)</sup>, Pro X<sup>1)</sup>, SmartMX<sup>1)</sup>, PayPass<sup>1)</sup>, Ultralight, Ultralight EV1<sup>4)</sup>, Ultralight C<sup>3)</sup></li> <li>▪ LEGIC Advant(ISO14443A)<sup>1)</sup></li> <li>▪ SLE44R35</li> <li>▪ SLE66Rxx (my-d move)</li> <li>▪ NTAG2xx<sup>4)</sup></li> </ul>
Certification	RoHS-II compliant
Weight	Approx. 3g
Order Code	T3NM-M

<sup>1)</sup> UID Only   <sup>2)</sup> Support of security level 1   <sup>3)</sup> Without crypto   <sup>4)</sup> r/w, enhanced security features planned

## Schematically picture (component side)

## Pinning



Pin	Name	Description
1	AntRX	Antenna receiver input
2	AntTX1	Antenna transmitter output 1
3, 20	VCC	3.3 - 5V
4, 6, 19	GND	Ground
5	AntTX2	Antenna transmitter output 2
7, 8, 9, 10	NC	Not connected
11	RXD	TTL receiver input
12	TXD	TTL transmitter output
13	GPIO0	General purpose input/output 0
14	GPIO1/ Beeper	General purpose input/output 1, connection port for beeper
15	Reset	Asynchronous reset
16	Enable	Hardware power up/down
17	GPIO2	General purpose input/output 2
18	GPIO3	General purpose input/output 3

Elatec reserves the right to change any information or data in this document without prior notice. The distribution and the update of this document is not controlled. Elatec declines all responsibility for the use of product with any other specifications but the ones mentioned above. Any additional requirement for a specific customer application has to be validated by the customer himself at his own responsibility. Where application information is given, it is only advisory and does not form part of the specification. Disclaimer: All names are registered trademarks. © 2015 Elatec GmbH – DocRev4 – 08/2015