

TGS822TF

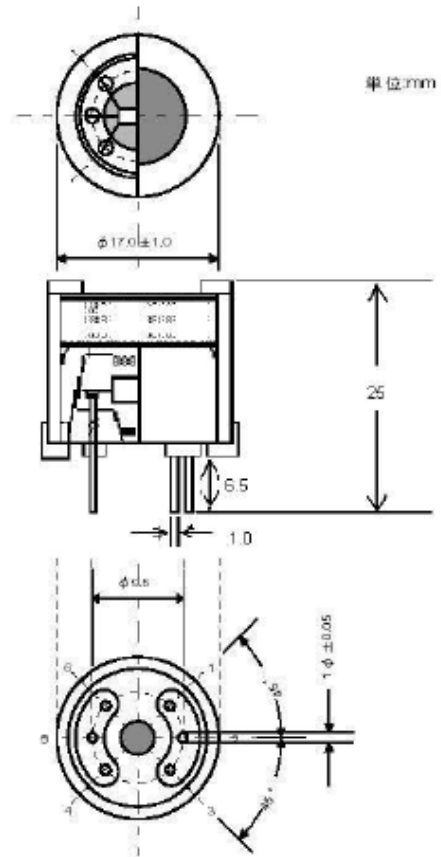
Specifications

Model No.		TGS822TF	
Type		8 type	
Target gas		Coal gas which includes H ₂ and CO	
Test gas		H ₂	
Detection range		200 to 5,000ppm	
Standard circuit conditions	Heater voltage	VH	5.0+/-0.2V DC/AC
	Circuit voltage	VC	MAX 24V
	Load resistance	RL	Variable
Electrical characteristics under standard test conditions	Heater power consumption	PH	Ps<15mW
	Heater resistance	RH	38+/-3.0Ω at room temp.
	Sensor resistance	Rs	660+/-55mW at VH=5.0V
	Sensitivity (change ratio of Rs)		1 to 12kΩ in 300ppm H ₂
Standard test conditions	Test conditions		0.4 to 0.63 <u>Rs(H₂: 300ppm)</u> <u>Rs(H₂:100ppm)</u>
	Circuit conditions		20+/-2°C, 65+/-5%RH VC=10.0+/-0.1V DC/AC VH=5.0+/-0.05V DC/AC
	Conditioning period before test		7 days or more

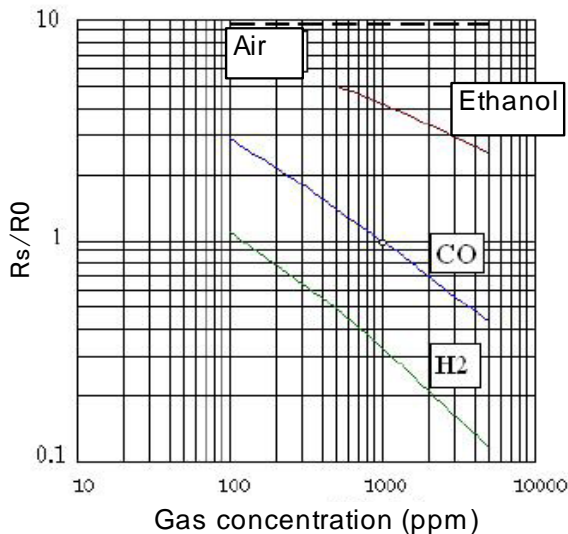
Appearance



Structure and dimensions



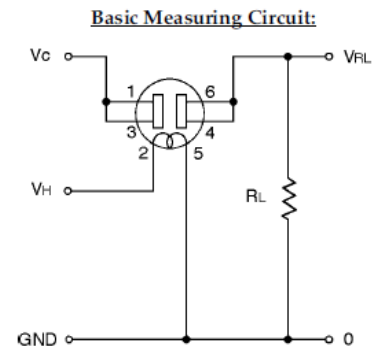
Sensitivity characteristics



Rs = Sensor resistance in displayed gases at various concentrations
R₀ = Sensor resistance in 1000ppm of CO

Pin Connection and Basic Measuring Circuit:

The numbers shown around the sensor symbol in the circuit diagram at the right correspond with the pin numbers shown in the sensor's structure drawing (above). When the sensor is connected as shown in the basic circuit, output across the Load Resistor (V_{RL}) increases as the sensor's resistance (R_s) decreases, depending on gas concentration.



Figaro Engineering Inc.
www.figaro.co.jp

1-5-11 Senba-nishi, Mino, Osaka 562-8505 JAPAN
Tel : (81)-72-728-2561 Fax : (81)-72-728-0467
E-mail: figaro@figaro.co.jp