

# DATASHEET

<b>Type</b>	Multiband antenna
<b>Frequencies</b>	AMPS (824-894 MHz) ISM (868 MHz) GSM (900 MHz) DCS (1800 MHz) PCS (1900 MHz) 3G (UMTS 2.1 GHz) WIFI / BLUETOOTH (2.4 GHz)
<b>Mounting</b>	Magnetic Mount
<b>Part No.</b>	<b>2J310M</b>
<b>Revision</b>	00



# 1. SPECIFICATION

## 1.1. Electrical Specifications

Frequencies	AMPS (824-894 MHz) ISM (868 MHz) GSM (900 MHz) DCS (1800 MHz) PCS (1900 MHz) 3G (UMTS 2.1 GHz) WIFI / BLUETOOTH (2.4 GHz)
Impedance	50 Ohms
Polarization	VERTICAL
Gain	5dBi at 2.4GHz
Power handling	30W
Operating temperature	-40°C to +85°C

## 1.2. Connection Specifications

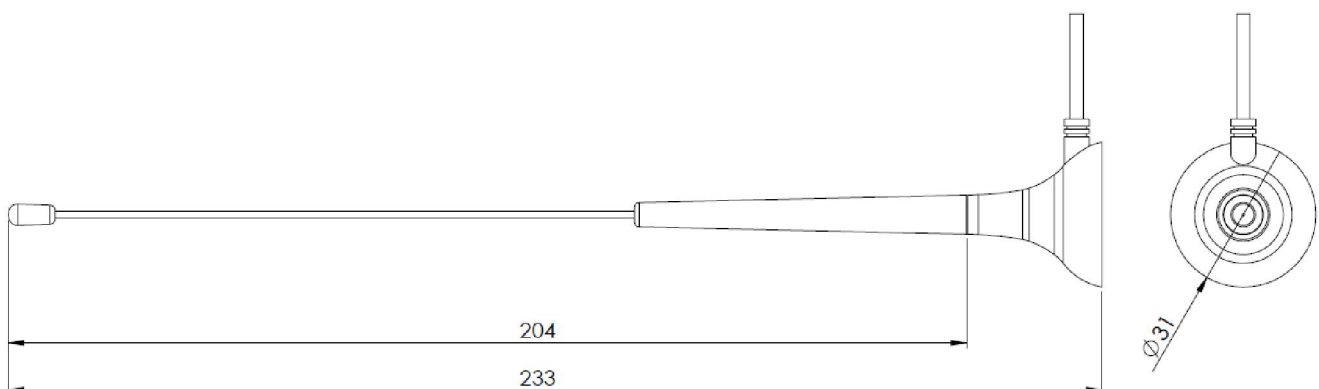
Connector type: SMA male  
Cable: RG174U  
Cable length: 80 cm

For different cable length and connector type ask our sales team.

## 1.3. Mechanical Specifications and Dimensions

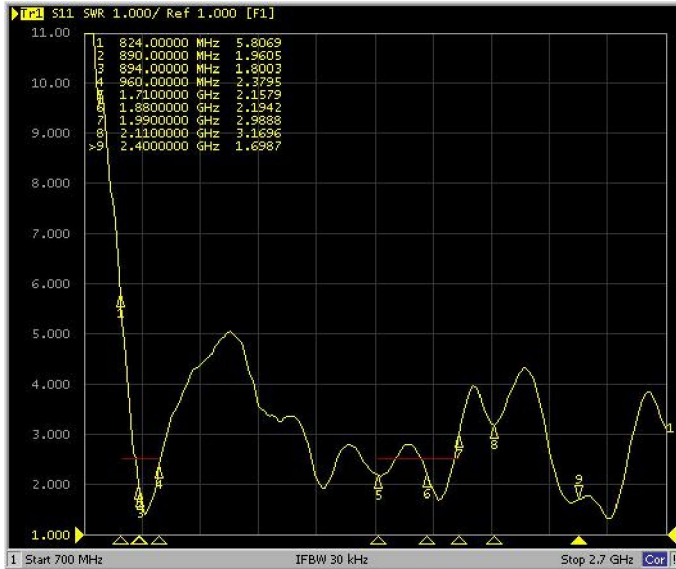
### 1.3.1. Magnetic Mount

Material: ABS  
Max. dimensions: 31mm x 233mm (D x H)  
Weight: 65g 'weight with connection above'  
Colour: Black (for different colours please ask our sales team)



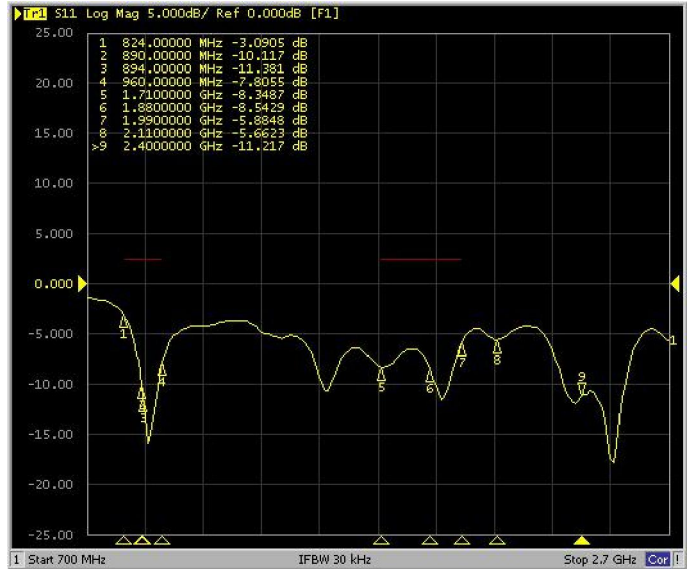
## 2. MEASUREMENT

VSWR(Quad Band)



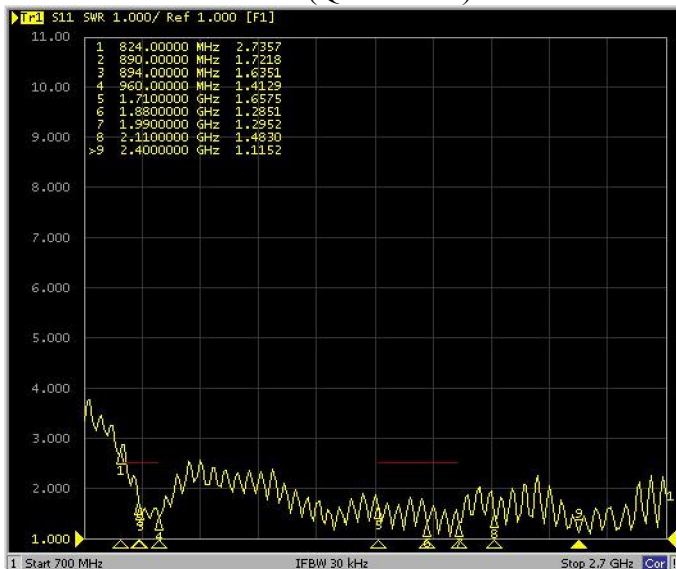
Tested with 30cm cable length - RG174 with SMA male

Log Mag(Quad Band)



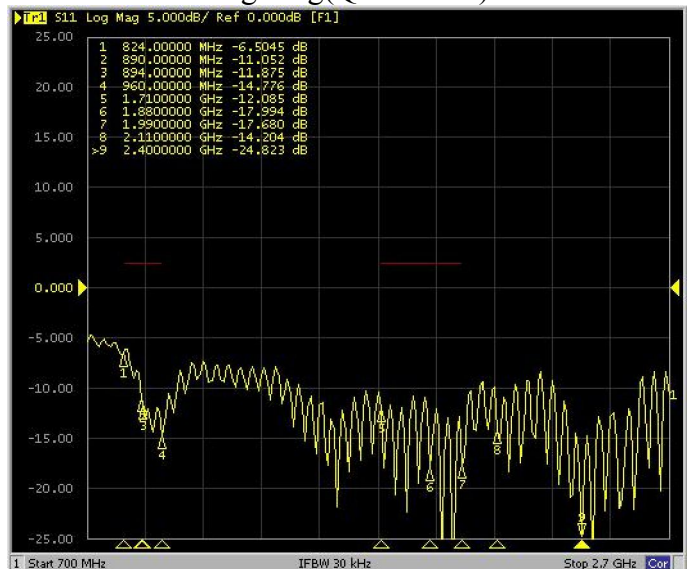
Tested with 30cm cable length - RG174 with SMA male

VSWR(Quad Band)



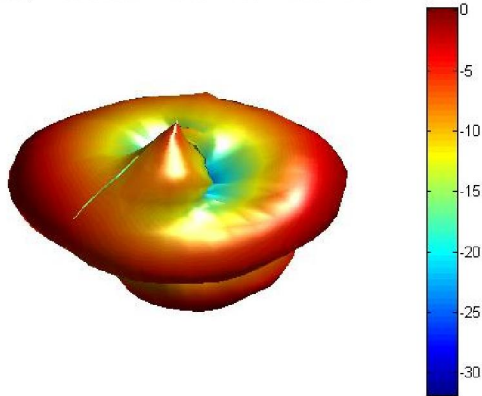
Tested with 2.5m cable length - RG174 with SMA male

Log Mag(Quad Band)



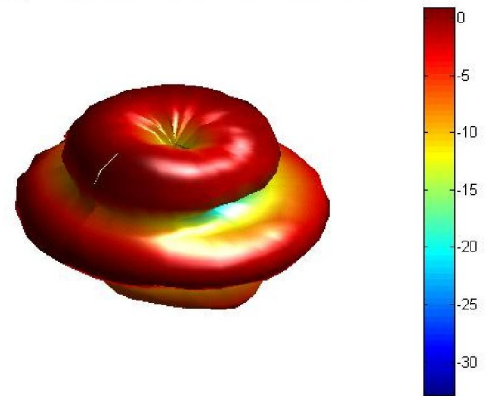
Tested with 2.5m cable length - RG174 with SMA male

3D radiation pattern at 900MHz.jpg  
Freq = 0.9GHz Az= 45 EL= 45



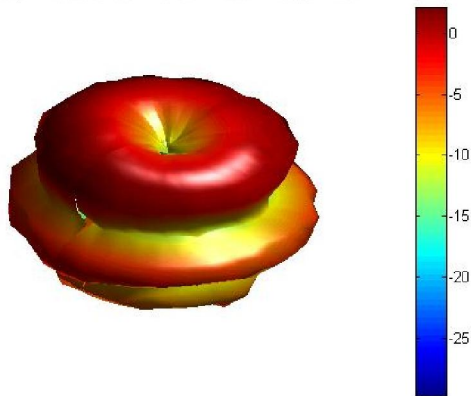
Tested with 30cm cable length.

3D radiation pattern at 1.8GHz.jpg  
Freq = 1.8GHz Az= 45 EL= 45



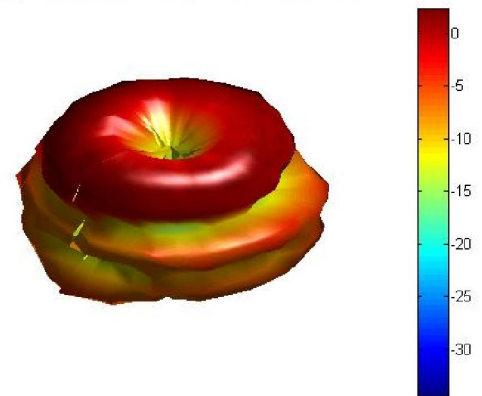
Tested with 30cm cable length.

3D radiation pattern at 1.9GHz.jpg  
Freq = 1.9GHz Az= 45 EL= 45



Tested with 30cm cable length.

3D radiation pattern at 2.4GHz.jpg  
Freq = 2.4GHz Az= 45 EL= 45



Tested with 30cm cable length.

### 3. IMAGES

