

EH 45F/16 DEV-PCB - PCB

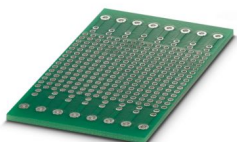


2202552

<https://www.phoenixcontact.com/pc/products/2202552>

Please be informed that the data shown in this PDF document is generated from our online catalog. Please find the complete data in the user documentation. Our general terms of use for downloads are valid.

Perfboard for the EH 45 FLAT DEV-KIT; for MKDS-5,08 terminal blocks; suitable for manual soldering



Your advantages

- Hole matrix PCB for self-assembly
- Hole matrix dimension: 2.54 mm
- Easy installation

Commercial data

Item number	2202552
Packing unit	1 pc
Minimum order quantity	1 pc
Product key	ACHCHE
GTIN	4055626142678
Weight per piece (including packing)	11.22 g
Weight per piece (excluding packing)	10.35 g
Customs tariff number	85340011
Country of origin	DK

2202552

<https://www.phoenixcontact.com/pc/products/2202552>

Technical data

Product properties

Product type	PCB
Housing type	DIN rail housing
Housing series	EH
Product family	EH

Material specifications

Color	green
Housing material	FR 4-21

Environmental and real-life conditions

Ambient conditions

Ambient temperature (operation)	110 °C
---------------------------------	--------

2202552

<https://www.phoenixcontact.com/pc/products/2202552>

Classifications

ECLASS

ECLASS-11.0	27182702
ECLASS-13.0	27260692

ETIM

ETIM 9.0	EC001031
----------	----------

UNSPSC

UNSPSC 21.0	31261500
-------------	----------

2202552

<https://www.phoenixcontact.com/pc/products/2202552>

Environmental product compliance

EU RoHS

Fulfills EU RoHS substance requirements	Yes, No exemptions
---	--------------------

China RoHS

Environment friendly use period (EFUP)	EFUP-E
	No hazardous substances above the limits

EU REACH SVHC

REACH candidate substance (CAS No.)	No substance above 0.1 wt%
-------------------------------------	----------------------------

Phoenix Contact 2025 © - all rights reserved
<https://www.phoenixcontact.com>

PHOENIX CONTACT GmbH & Co. KG
Flachmarktstraße 8
D-32825 Blomberg
+49 (0) 5235-3 00
info@phoenixcontact.com