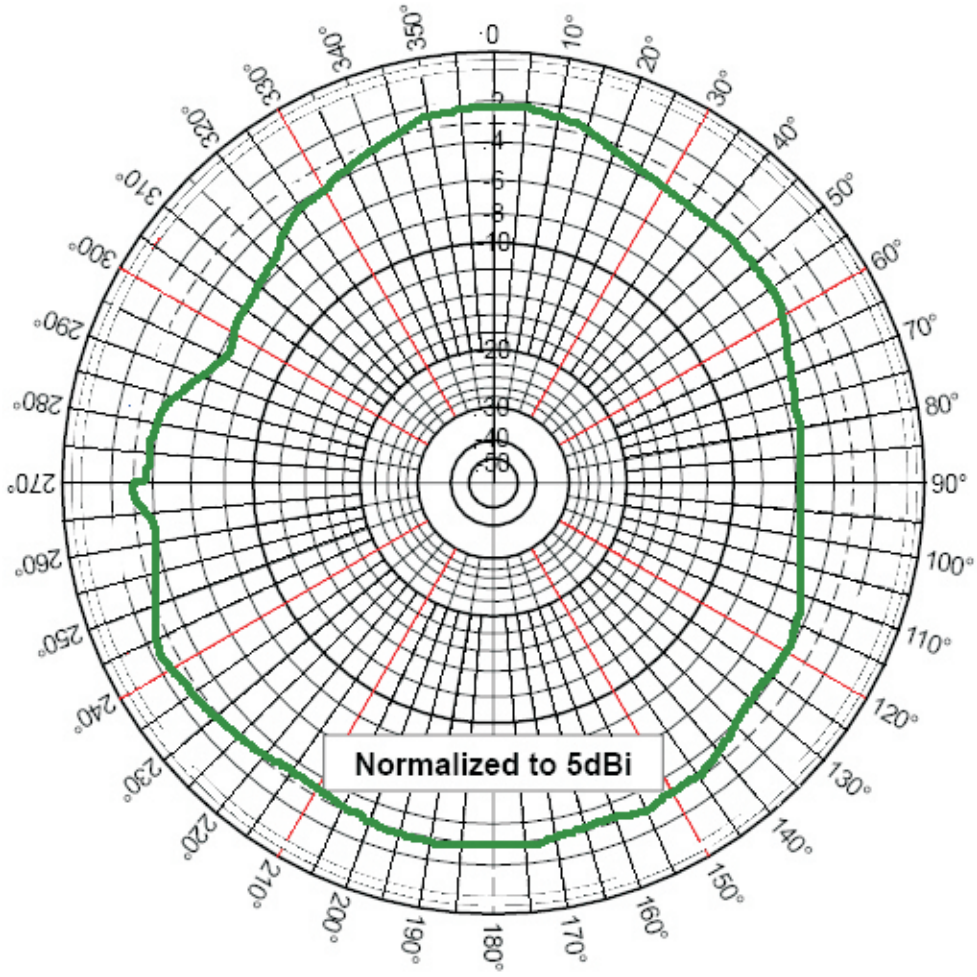


patch antenna | 2J550

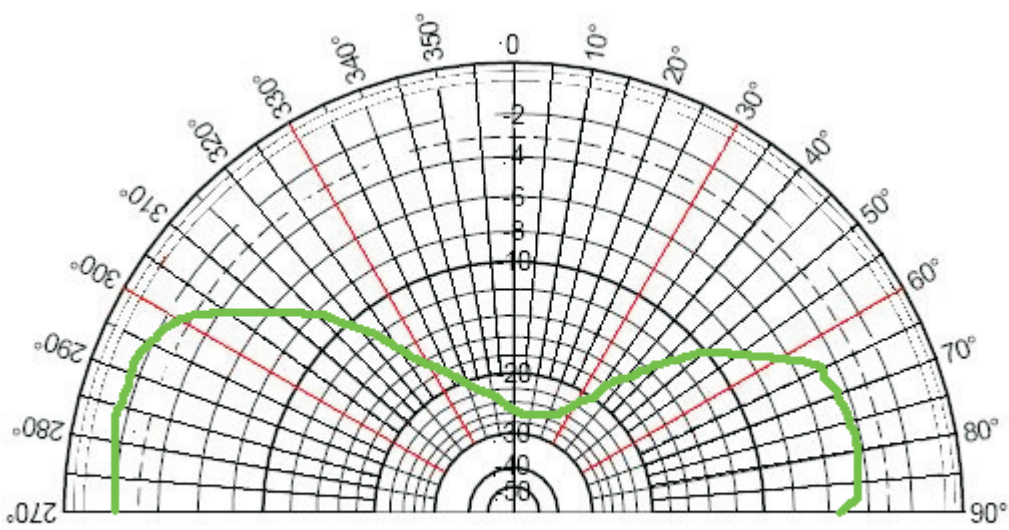
reference

**2J550**

mounting position	<b>ON GLASS</b>
nominal impedance	<b>50 Ohms</b>
frequency	<b>AMPS 824-894MHz / GSM 900, 1800 MHz PCN 1,9GHz / UMTS 2,1GHz/ Bluetooth 2,4GHz</b>
polarisation	<b>VERTICAL</b>
gain	<b>0 dBi</b>
vswr	<b>&lt;2:1</b>
power handling	<b>25W</b>
cable	<b>2.5m RG174</b>
connector	<b>FME Female</b>
housing size	<b>72 mm x 25mm x 4,7 - 6,3mm</b>
working temperature	<b>-40°C to +85°C</b>

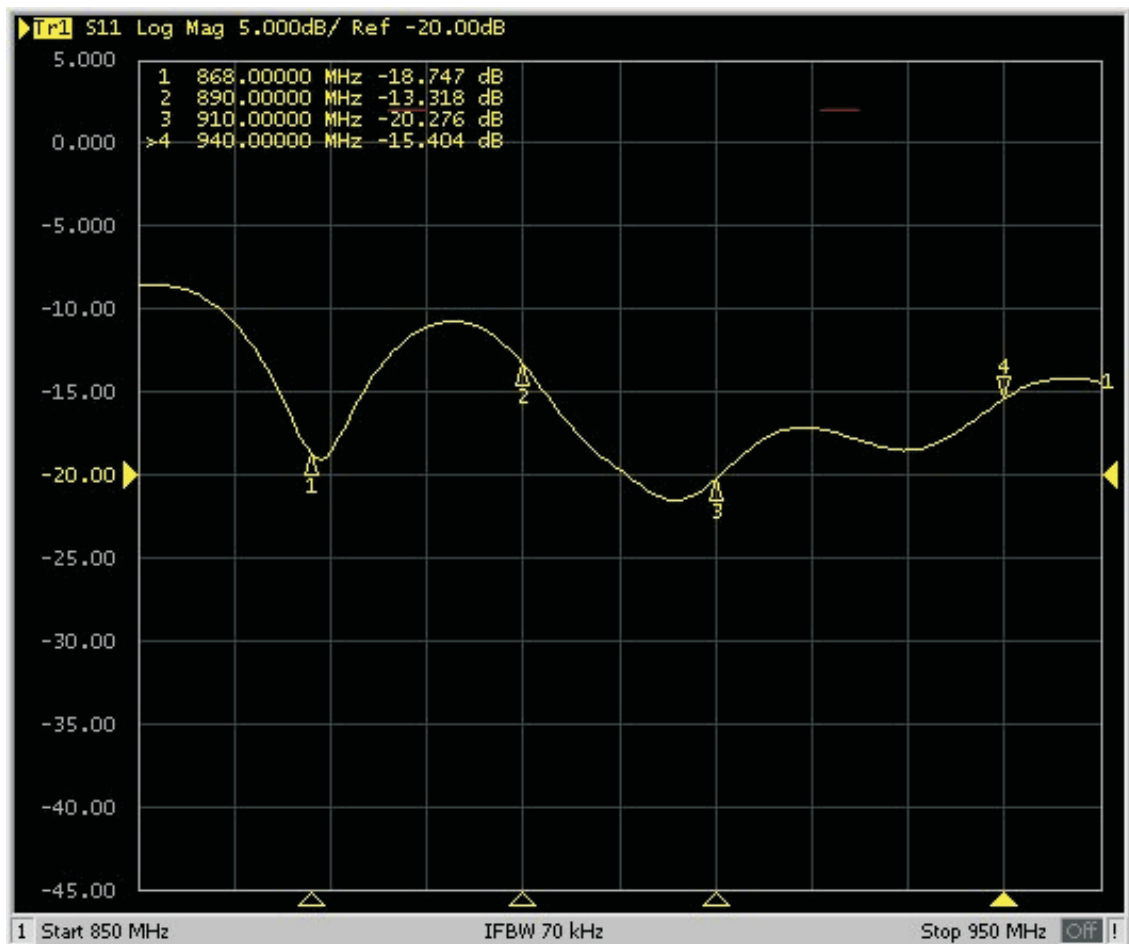


Azimuthal Pattern (X, Y or E-Plane)

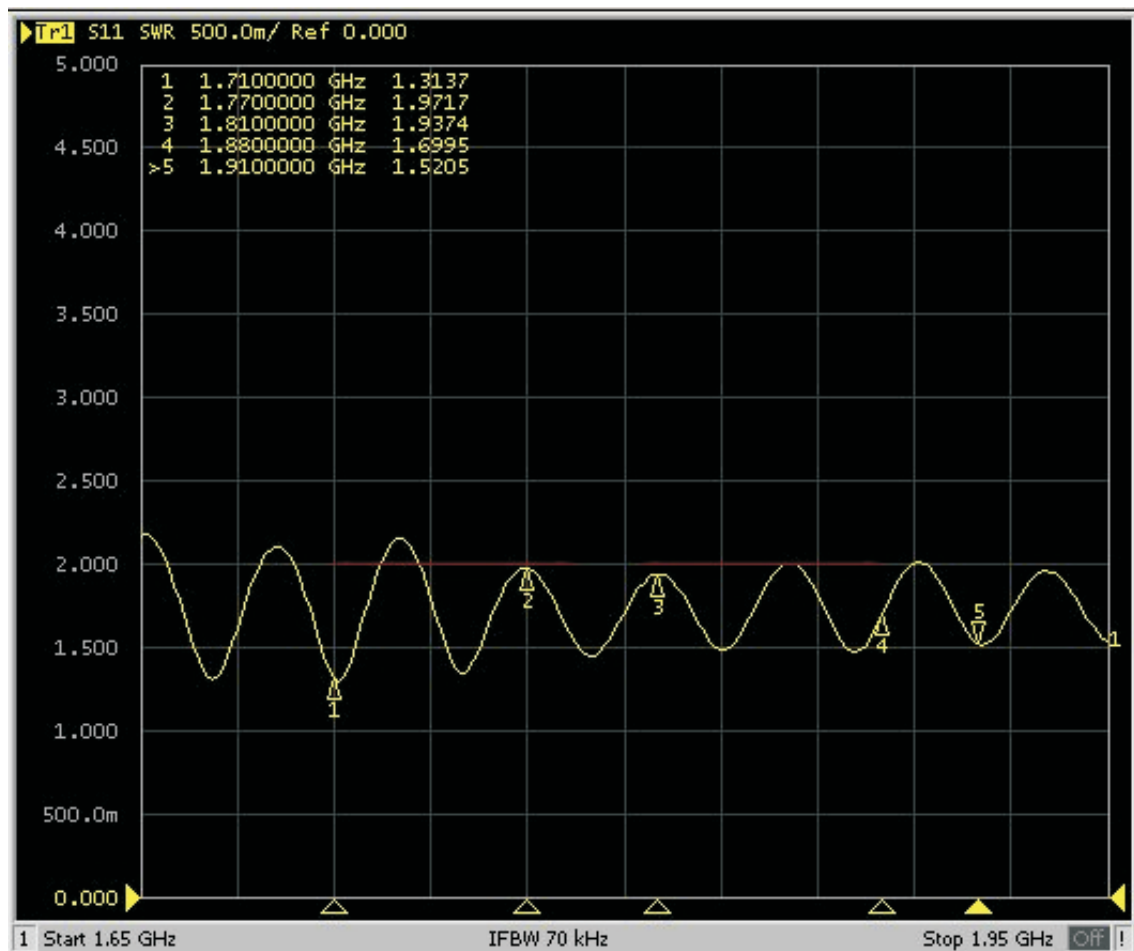


Elevation Pattern (Z, Y or H-Plane)

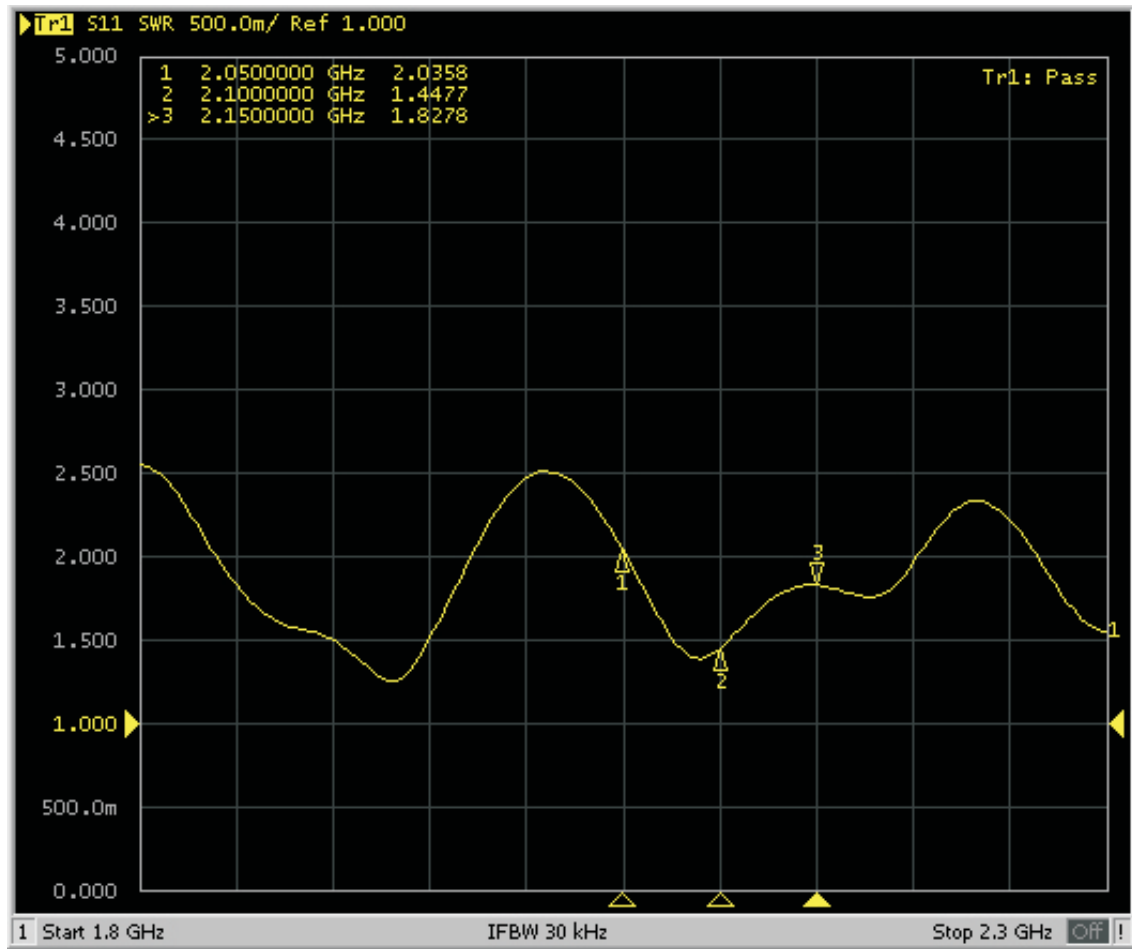
# 900 MHz



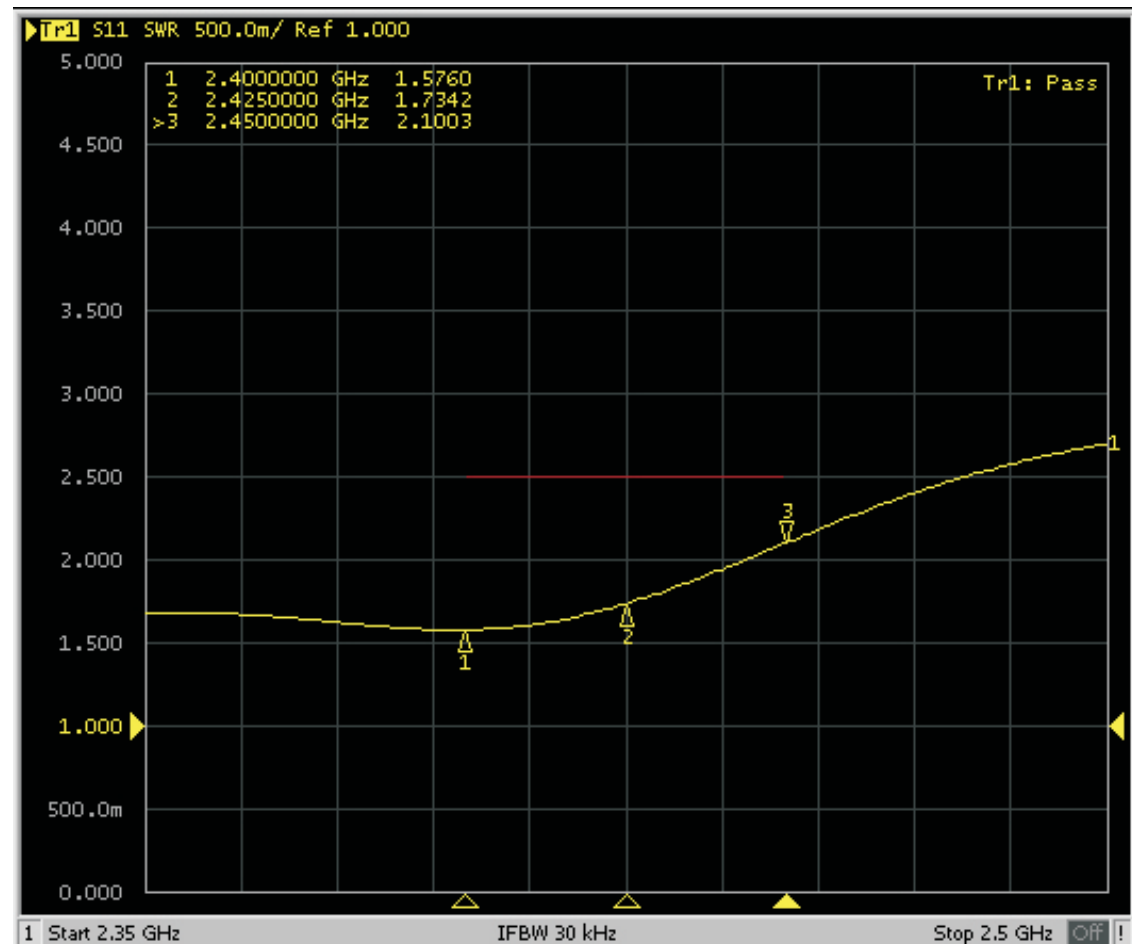
# 1800/1900 MHz



# 2100 MHz



# 2400 MHz



patch antenna | 2J550