

FCM360W EVB Introduction

2024-02-23

[Edit this page](#)

Supported Modules

Supported module model

- [FCM360W](#)

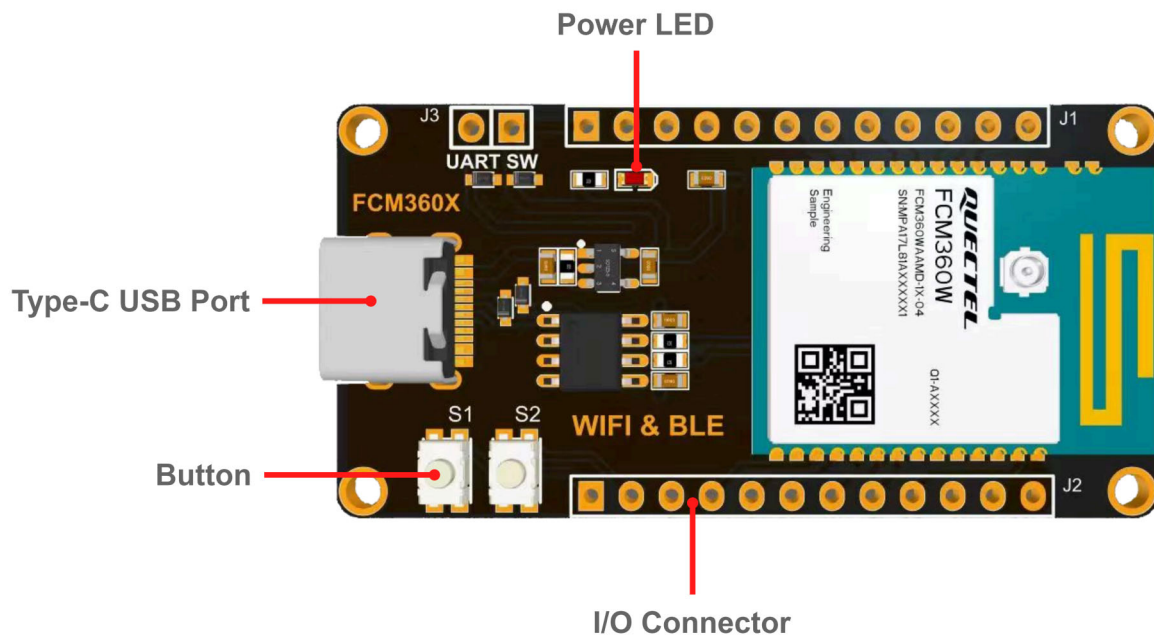
Feature List

Basic Overview

The QuecPython_FCM360W_EVB development board is a compact and portable "pocket-sized" board designed specifically for QuecPython. It features a Type-C interface, allowing developers to easily use the board with just a USB Type-C data cable.

Feature Description

The main components and interface layout of the EVB are shown in the figure below.



Document download

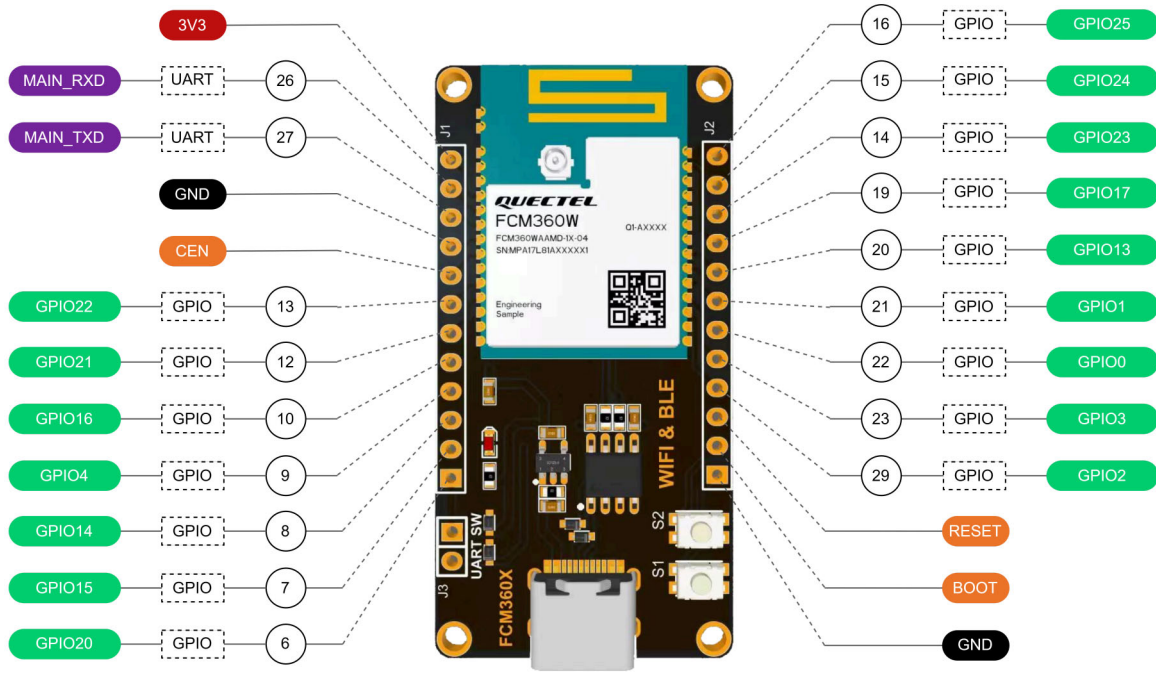
- [FCM360X_EVB_SCH](#)

Pin Header	Pin No.	Name	Feature
J1	-	VCC_3V3	3.3 V
J1	26	MAIN_RXD	UART0
J1	27	MAIN_TXD	UART0
J1	-	GND	Ground
J1	5	CEN	Module enable control
J1	13	IO22	GPIO22
J1	12	IO21	GPIO21
J1	10	IO16	GPIO16
J1	9	IO4	GPIO4
J1	8	IO14	GPIO14
J1	7	IO15	GPIO15
J1	6	IO20	GPIO20

J2 Pin Assignment

Pin Header	Pin No.	Name	Feature
J2	16	IO25	GPIO25
J2	15	IO24	GPIO24
J2	14	IO23	GPIO23
J2	19	IO17	GPIO17
J2	20	IO13	GPIO13
J2	21	IO1	GPIO1
J2	22	IO0	GPIO0
J2	23	IO3	GPIO3
J2	29	IO2	GPIO2
J2	11	RESET	Module reset control
J2	17	BOOT	Module boot control
J2	-	GND	Ground

The following figure shows the pin assignment.



	Pin Number of FCM360W Module		GPIO Input and Output		Power Rails
	Pin Name of FCM360W Module		Serial for Communication		Ground
	Internal Pin of FCM360W Module				

Tips

For more information about the EVB, please visit [QuecPython Download](#)

EVB Configuration

The pins of peripherals are shown in the table below.

No.	Name	Model	Supported	Interface Type	Pin
1	USB to UART	CH340N	Yes	USB	26 and 27
2	Key	-	Yes	GPIO	15 and 16