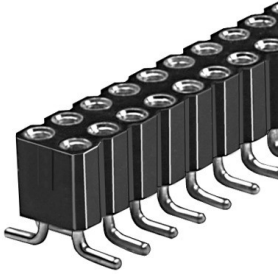


Data sheet Product BLY 8 SMD 10 SM



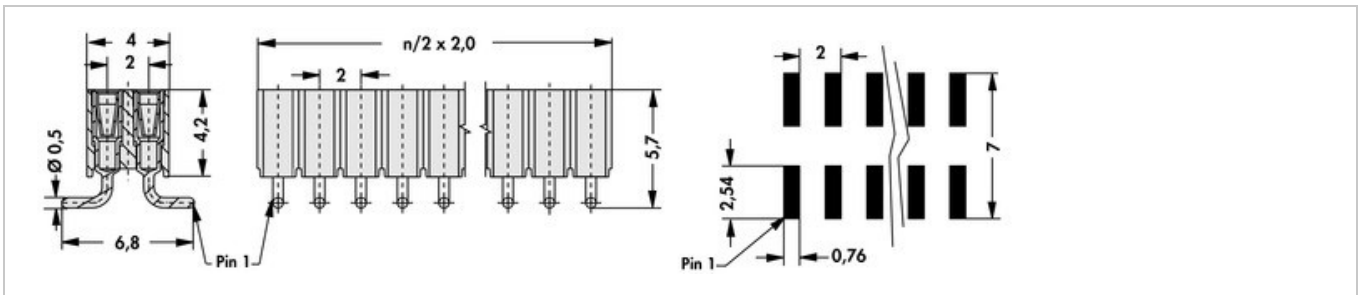
PCB connectors>Female headers
for □ 0.5 mm and up to 0.56 mm Ø

Features

| | |
|--|---|
| grid: | 2 mm |
| no. of contacts: | 10 |
| contact material: | CuZn-alloy |
| contact sleeve: | tin-plated |
| surface contact / contact sleeve: | Ni+4...6µm Sn |
| contact spring: | gold-plated |
| inner contact spring material: | CuBe-alloy |
| inner contact spring surface: | Ni+0,25µm Au |
| type internal spring: | 6-fingers |
| plugability for circuit points: | <ul style="list-style-type: none">• □0,45...0,5mm• Ø0,4...0,56mm |
| insert depth: | 2.5...3.8mm |
| insertion / drawing force: | 1.3N/0.3N |
| shock resistance: | 50 g |
| volume resistance: | ≤10 mΩ |
| vibration resistance max.: | 15 g |
| capacity between two adjacent contacts: | ≤0,7 pF |
| nominal current: | 2.5 A |
| nominal voltage: | 100 V DC |
| test voltage: | 500 V |
| insulating body material: | PA 4.6. GF |

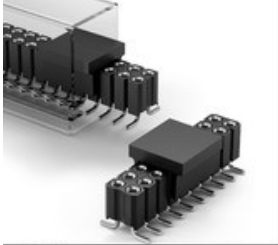
| | |
|---------------------------------|---|
| temperature range: | <ul style="list-style-type: none"> • -40°C... +163°C • (260°C/10 s) |
| class of inflammability: | UL 94 V-0 |
| version: | female header |
| specific insulation resistance: | $>10^7 \Omega \cdot m$ |
| connection type: | SMD |
| reflow solderable: | yes |
| packing: | bar magazine |

Technical Drawing

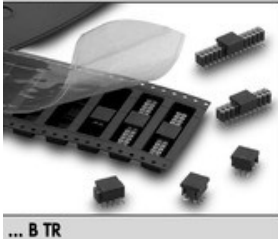


Equipping

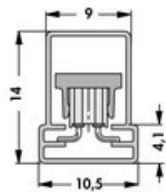
- reel diameter \varnothing 330 mm



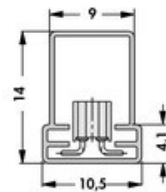
... B SM



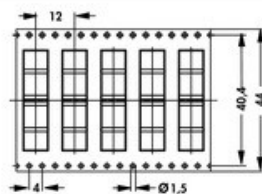
... B TR



BLY 8 SMD ... B SM



BLY 8 SMD ... SM



BLY 8 SMD ... B TR

