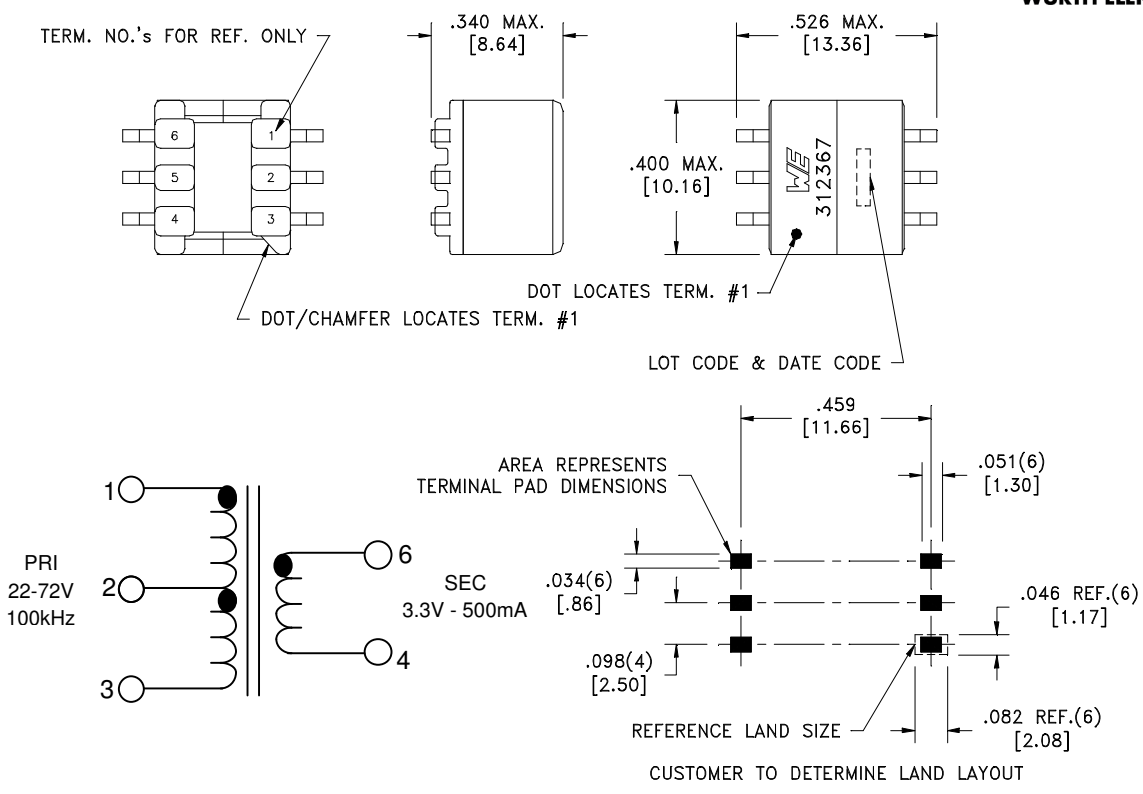


| | | |
|-------------------|------|---------------|
| CUSTOMER TERMINAL | RoHS | LEAD(Pb)-FREE |
| Sn96%, Ag4% | Yes | Yes |



ELECTRICAL SPECIFICATIONS @ 25°C unless otherwise noted:

| | |
|--------------------------|---|
| D.C. RESISTANCE (@20°C): | 1-3 , 0.81 Ohms ±10%. 6-4 , 0.013 Ohms max. |
| DIELECTRIC RATING: | 1500VAC, 1 minute tested by applying 1875VAC for 1 second between pins 1-6. |
| INDUCTANCE: | 300µH ±10%, 10KHz, 100mVAC, 0mADC, 1-3, Ls. |
| SATURATION CURRENT: | 450mA saturating current that causes 20% rolloff from initial inductance. |
| LEAKAGE INDUCTANCE: | 1.7µH typ., 4µH max., 100KHz, 100mVAC, 1-3(4+6), Ls. |
| URNS RATIO: | (1-2):(2-3) , (1):(1.00), ±1%. (1-3):(6-4) , (8.4):(1.00), ±1%. |

Wire insulation & RoHS status not affected by wire color. Wire insulation color may vary depending on availability.

OPERATING TEMPERATURE RANGE: -40°C to 125°C including temp. rise.

Safety Standard Undefined

T_1_0353

| | | | | |
|--|---|------------|------------------------------------|-------------------|
| WE-Midcom, Inc. Watertown, SD USA Toll Free: 800-643-2661 Fax: 605-886-4486 | Unless otherwise specified, tolerances are as follows: Angles: ±1° Fractions: ±1/64 Decimals: ±.005 (.127mm) | | WE-Midcom, Inc. | |
| | Drawing Title Transformer | | Drawing Number 750312367 | Rev. 01 |
| Revisions: See Sheet 1 | | Scale ---- | Sheet 2 of 5 | |
| Engineer:ANC | | 08/11/2011 | | |

This drawing is dual dimensioned.
Dimensions in brackets are in millimeters