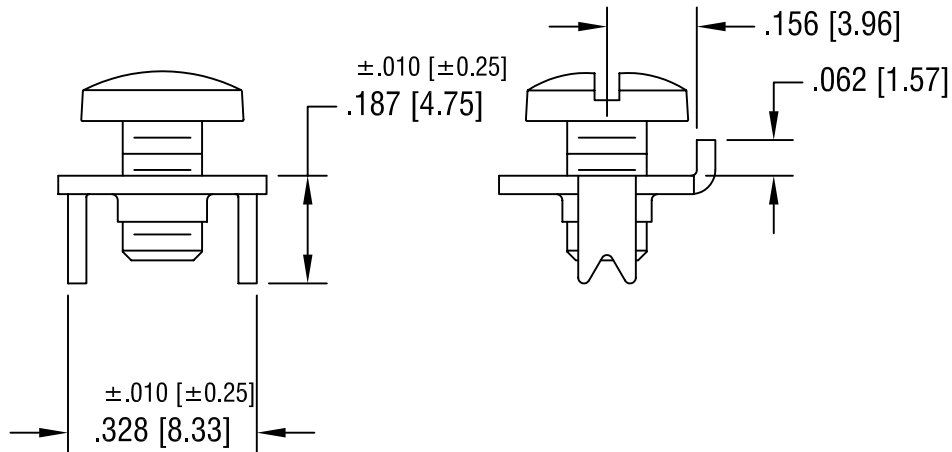
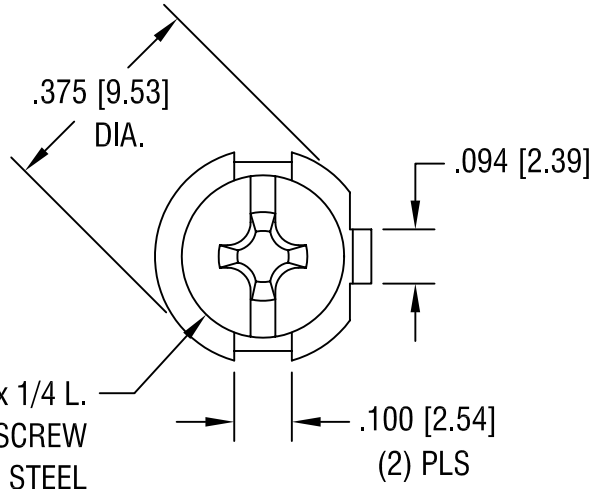
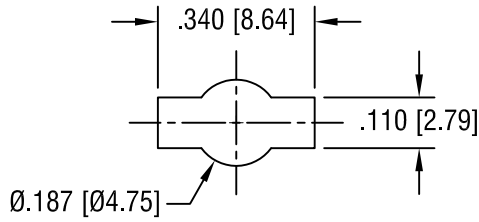


THIS DOCUMENT IS THE PROPERTY OF
KEYSTONE ELECTRONICS CORP. AND
SHALL NOT BE REPRODUCED, DISTRIBUTED
OR USED AS A BASIS FOR MANUFACTURE
WITHOUT PRIOR WRITTEN PERMISSION
FROM KEYSTONE ELECTRONICS CORP.

MOUNTING DETAIL



KEYSTONE ELECTRONICS CORP.

ASTORIA, N.Y. 11105-2017

PART NAME

SCREW TERMINAL

MATERIAL

.032 [0.81] TH'K BRASS

FINISH

TIN PLATE

DRN BY

BOONE

DATE

10.8.98

APPD

SCALE

3X

10.14.04 CHANGE AS PER ECN 04-133

A

TOLERANCES

INCH [MM]

CODE

DWG NO.

DECIMAL ±.005 [± 0.15]

C

ANGULAR ± 1°
UNLESS OTHERWISE SPECIFIED

1201

DATE

DESCRIPTION

REV.