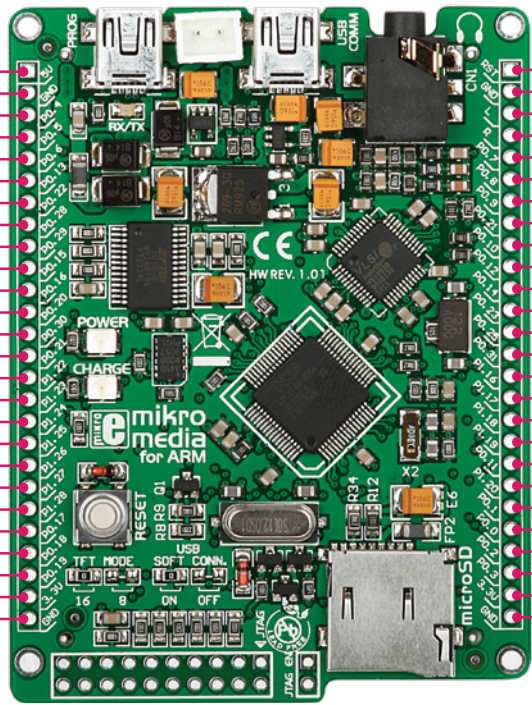


- 5V power supply
- Reference Ground
- SCK0/CAPO.1/ADO.6
- MISO0/MATO.1/ADO.7
- MOSIO/CAPO.2/AD1.0
- DTR1/MAT1.1/AD1.4
- AD1.7/CAPO.0/MATO.0
- ADO.1/CAPO.2/MATO.2
- ADO.2/CAPO.3/MATO.3
- RI1/EINT2/AD1.5
- EINT0/MATO.2/CAPO.2
- MAT1.3/SSEL1/EINT3
- ADO.3/EINT3/CAPO.0
- PWM5/AD1.6/CAP1.3
- AD1.7/CAPO.0/MATO.0
- PIPESTAT2
- TRACECLK
- EXTINO
- RTCK
- TDO
- TDI
- CAP1.2/SCK1/MAT1.2
- CAP1.3/MISO1/MAT1.3
- MAT1.2/MOSI1/CAP1.2
- 3.3V power supply
- Reference Ground

- 5V
- GND
- P0.4
- P0.5
- P0.6
- P0.13
- P0.22
- P0.28
- P0.29
- P0.15
- P0.16
- P0.20
- P0.30
- P0.21
- P1.22
- P1.23
- P1.24
- P1.25
- P1.26
- P1.27
- P1.28
- P0.17
- P0.18
- P0.19
- 3.3V
- GND



- RST
- GND
- L
- R
- P0.7
- P0.8
- P0.9
- P0.21
- P0.10
- P0.12
- P0.14
- P0.23
- P0.25
- P0.31
- P1.16
- P1.17
- P1.18
- P1.19
- P0.11
- P1.20
- P0.1
- P0.0
- P0.2
- P0.3
- 3.3V
- GND

- Reset pin
- Reference Ground
- left ch.] audio out
- right ch.
- SSEL0/PWM2/EINT2
- TXD1/PWM4/AD1.1
- RXD1/PWM6/EINT3
- PWM5/AD1.6/CAP1.3
- RTS1/CAP1.0/AD1.2
- DSR1/MAT1.0/AD1.3
- DCD1/EINT1/SDA1
- VBUS
- ADO.4/AOUT
- UP_LED/CONNECT
- TRACEPKT0
- TRACEPKT1
- TRACEPKT2
- TRACEPKT3
- CTS1/CAP1.1/SCL1
- TRACESYNC
- RXD0/PWM3/EINT0
- TXD0/PWM1
- SCLO/CAPO.0
- SDA0/MATO.0/EINT1
- 3.3V power supply
- Reference Ground

- Pin functions -

- Pin functions -

mikroMedia for ARM - Board dimensions

