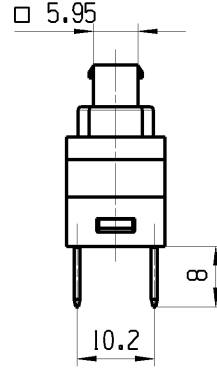
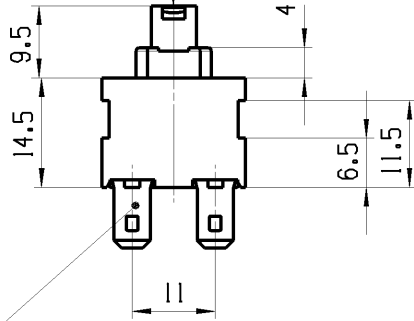
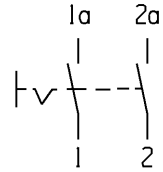
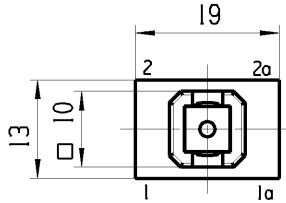


Betaetigungskraft F=9N ±3N  
operating force F=9N ±3N



Flachstecker ae hn l./plug in sim.  
DIN46244-A 4.8-0.8



Ausschalter 2-polig  
fuer Ger aete der Klasse II geeignet

DPST  
suitable for appliances of class II

G-Konform nach IEC 60335-1:2001 Kap.30  
G-matching IEC 60335-1:2001 clause 30

Aufschrift  
Marking

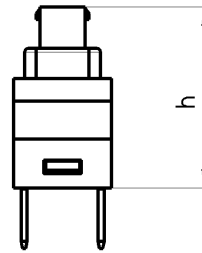


168..  
16141/250 ~  
121121/250 ~  
10181/250 ~ 5E4  
05 T125

R97 us

Aufschriftbeschreibung  
marking description

R97: 12A 125-250 VAC  
1/2HP 125-250 VAC



Schaltstellung/ operating position	h
AUS/off	24.0
EIN/on	20.95
Block/block	19.7

Herstellort/-jahr/-woche nach DIN EN 60062  
date of manufacture: place/year/week acc. to DIN EN 60062

Auf Verpackung/on box: G  
6.630-437.0

fuer Form und Lage FOR SHAPE AND LOC.	⊙ =		Allgemeintoleranzen UNTOLERANCED DIMENSIONS			Pause COPY	Blatt SHEET 01	TYP K	Zeichn./DRAWING NO. 16891802		Index b
	fuer Winkel FOR ANGLE. ± 2	PROJEKTION		Abmasse und Nennmassbereiche Angaben in mm	Laenge LENGTH				Radien RADII	Original Din A4	
				0-6 ± 0.2 ± 0.2	>6-15 ± 0.4 ± 0.4	>15-30 ± 0.4 ± 0.4					
			ALL DIMENSIONS ARE IN MILLIMETRES	>30-70 ±	>70-120 ±	± 10%					
				>120-200 ±							
b	64355	20.07.09	MUT				CAD: NX v6.0				
a	52247	23.04.07	HHE				gez./DRAWN BY 09.03.07 MUT				
	51507	05.04.07	MUT				gepr./CHECKED BY				
Ausg. ISSUE	Aenderung REVISION	gez. DRAWN BY	Ausg. ISSUE	Aenderung REVISION	gez. DRAWN BY	Ersatz fuer/REPLACEMENT OF V07011021		MARQUARDT			