

POWER RELAY

1 POLE - High Capacity 32A Type

FTR-K3-PV Series

■ FEATURES

- 1 pole, 32A
- 1 form A contact
- Wide contact gap: 1.5mm
(Compliant with European photovoltaic standard VDE0126)
- High insulation in small package (between coil and contacts)
 - Dielectric strength: AC 4,000V
 - Surge strength: 6,000V
- Low coil power consumption: 1,200mW
- Coil holding voltage can be reduced up to 35% of nominal coil voltage (ambient temperature; +20 °C, contact current; 32A)
Power consumption at the lowest coil holding voltage; 147mW
* Coil holding voltage is the coil voltage after 100ms of applied nominal coil voltage
- Plastic materials: Flammability; UL94 V-0
- Cadmium-free contacts
- Flux free, cat. RTII protection
- RoHS compliant.
Please see page 6 for more information



■ PARTNUMBER INFORMATION

[Example] FTR-K3 A B 012 W - PV
 (a) (b) (c) (d) (e) (f)

(a)	Relay type	FTR-K3 : FTR-K3-Series
(b)	Contact configuration	A : 1 form A / PCB type
(c)	Coil power	B : Standard (1,200mW)
(d)	Coil rated voltage	012 : 5.....48 VDC Coil rating table at page 3
(e)	Contact material	W : Silver alloy
(f)	Option code	PV : High current (32A) / contact gap 1.5mm

E.g.: Ordering code: FTR-K3AB012W-PV Actual marking: K3AB012W-PV

FTR-K3-PV SERIES

■ SPECIFICATION

Item		FTR-K3 high capacity type
Contact Data	Configuration	1 form A
	Material	Silver alloy
	Resistance (initial)	Max. 100 mΩ at 6VDC, 1A
	Contact rating (resistive)	32A, 250VAC
	Max. carrying current	32A
	Max. switching voltage	250VAC
	Max. switching power	8,000VA
	Max. switching current	32A
	Min. switching load *1	100mA, 5VDC (reference value)
Life	Mechanical	Min. 1 x 10 ⁶ operations
	Electrical (resistive)	32A / 250VAC, min. 30 x 10 ³ operations
	Electrical (inductive)	Endurance 32A, 250VAC, cos φ = 0.8, min. 30 x 10 ³ operations
		Overload 48A, 250VAC, cos φ = 0.8, min. 50 operations
Coil Data	Rated power (at 20 °C)	1,200mW
	Operate power (at 20 °C)	588mW
	Coil power at holding voltage	147mW (35% of nominal coil voltage)
	Holding voltage range *2	35~120% of nominal coil voltage (32A at + 20 °C) 45~80% of nominal coil voltage (32A at + 85 °C)
	Operating temperature range	-40 °C to +60 °C (coil nominal voltage) -40 °C to +85 °C (holding voltage; 45~80% of nominal coil voltage)
Timing Data	Operate (at nominal voltage)	Max. 20ms (without bounce)
	Release (at nominal voltage)	Max. 10ms (no diode, without bounce)
Insulation	Contact gap (initial)	Min. 1.5mm
	Resistance	Min. 1,000MΩ at 500VDC
	Dielectric strength	Open contacts 2,500VAC (50/60Hz) 1min
		Contacts to coil 4,000VAC (50/60Hz) 1min
	Surge strength	Contacts to coil 6,000V / 1.2 x 50μs standard wave
	Clearance / creepage	Min. 6.0mm / min. 8.0mm
	EN61810-1, VDE0435	Voltage 250VAC
		Pollution degree 3
		Material group IIIa
Other	Vibration resistance	Misoperation 10 to 55 to 10Hz single amplitude 0.75mm
		Endurance 10 to 55 to 10Hz single amplitude 0.75mm
	Shock	Misoperation Min. 200m/s ² (11 ± 1ms)
		Endurance Min. 1,000m/s ² (6 ± 1ms)
	Weight	Approximately 26g

*1 Minimum switching loads mentioned above are reference values. Please perform the confirmation test with actual load before production since reference values may vary according to switching frequencies, environmental conditions and expected reliability levels.

*2 Coil holding voltage is the coil voltage after 100ms of applied nominal coil voltage.

■ Care shall be taken on the heat generated on PC board when maximum carrying current exceeds 10A.

Please perform the confirmation test with actual conditions.

FTR-K3-PV SERIES

■ COIL RATING

Coil Code	Rated Coil Voltage (VDC)	Coil Resistance +/- 10% (Ohm)	Must Operate Voltage (VDC) * ¹	Must Release Voltage (VDC) * ¹	Min. Non Release Voltage (VDC) * ¹	Rated Power (mW)
005	5	21	3.5	0.5	1.75	1,200 (147)* ²
006	6	30	4.2	0.6	2.1	
009	9	68	6.3	0.9	3.15	
012	12	120	8.4	1.2	4.2	
018	18	270	12.6	1.8	6.3	
024	24	480	16.8	2.4	8.4	
048	48	1,920	33.6	4.8	16.8	

Note: All values in the table are valid for 20°C and zero contact current.

*¹ Specified operate values are valid for pulse wave voltage.

*² This value is the coil power at 35% of nominal voltage at 20°C.

■ Please use at rated coil voltage. Please refer to characteristic data and set up adequate voltage in case of use at over voltage.

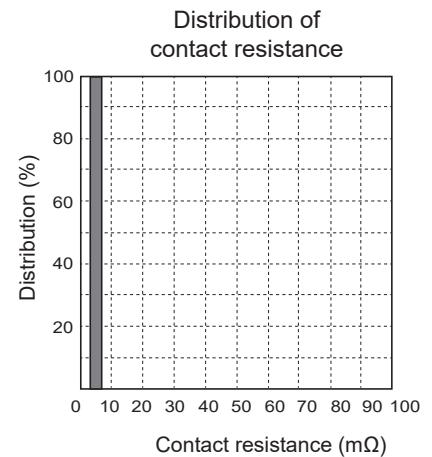
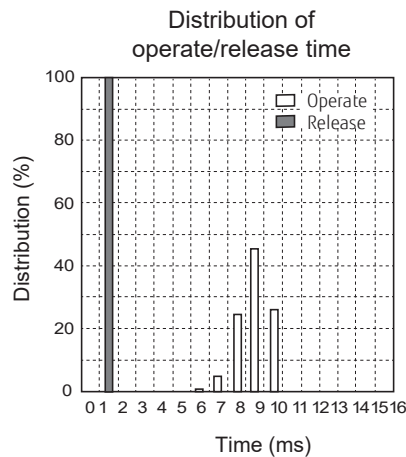
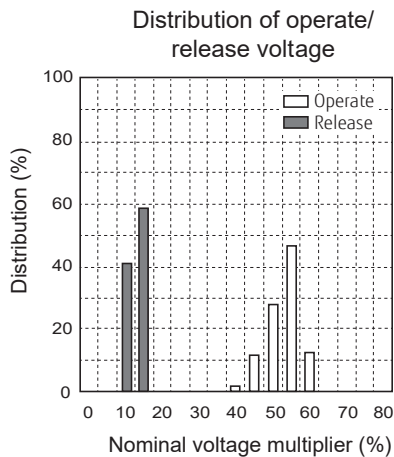
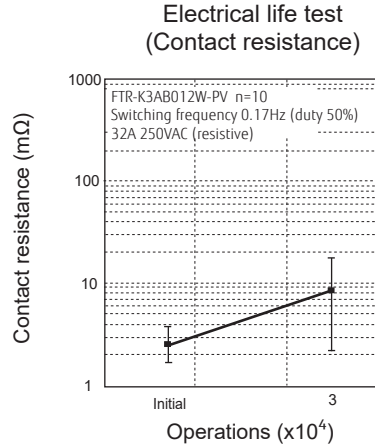
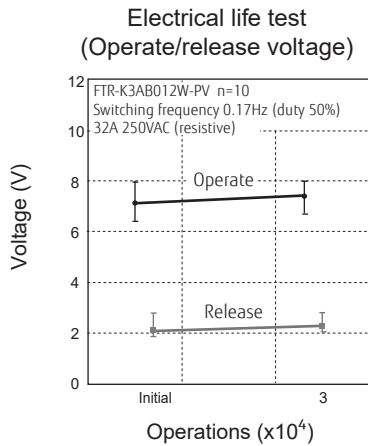
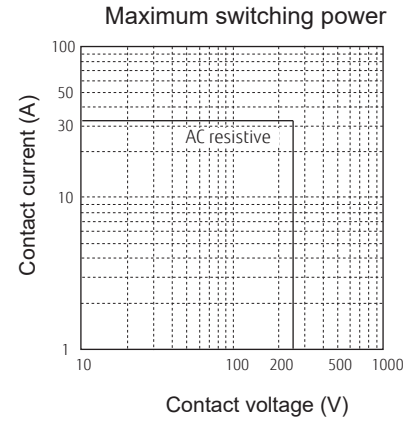
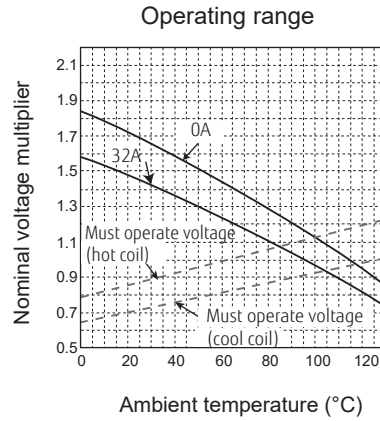
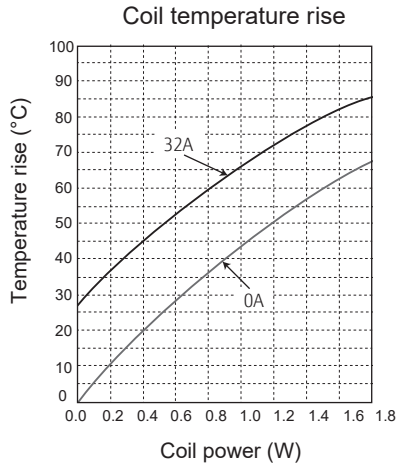
■ SAFETY STANDARDS

Type	Compliance	Contact rating
UL	UL 508 CSA 22.2 No.14 (cULus)	Flammability: UL 94-V0 (plastics)
	E63614	36A, 277VAC (General use at +85 °C, 10K operations) 32A, 277VAC (General use at +85 °C, 30K operations) 1hp 125VAC (at +60°C) 2hp 277VAC (at +60°C, 100K operations)
VDE	IEC/EN61810-1	32A, 250VAC (cos φ = 0.8 at +85 °C)

FTR-K3-PV SERIES

■ CHARACTERISTIC DATA

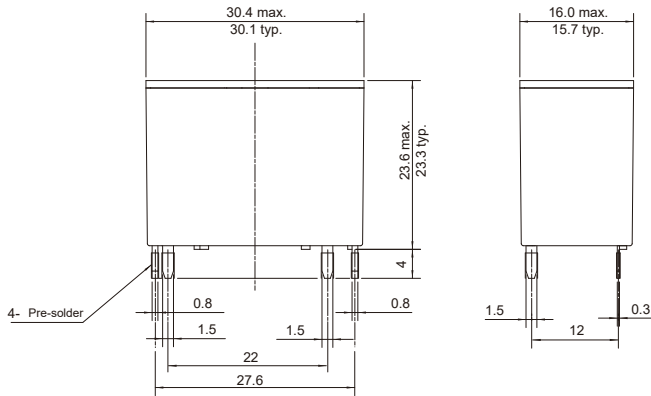
(Characteristic data is not guaranteed value but measured values of samples from production line.)



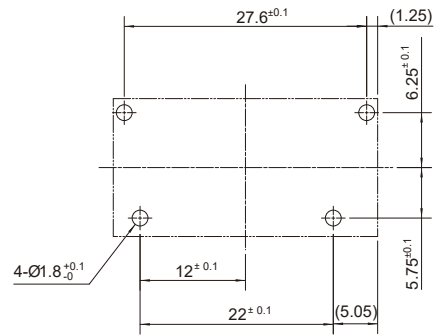
FTR-K3-PV SERIES

■ DIMENSIONS

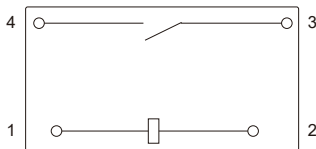
● Dimensions



● PC board mounting hole layout (BOTTOM VIEW)



● Schematics (BOTTOM VIEW)



- Dimensions of the terminals do not include thickness of pre-solder.
- Tolerance of PC board mounting hole layout : ± 0.1 unless otherwise specified.

Unit; mm
(): Reference

CAUTIONS

- All values mentioned in this datasheet are provided under ideal conditions.
Please perform the confirmation test before actual use.
- Reflow soldering is prohibited.
- Do not use relays in the atmosphere with sulfide gas, chloride gas or nitric oxide.
Contact resistance may increase.
- Do not use silicon or silicon-containing product or materials near relays.
It may cause contact failure.

GENERAL INFORMATION

1. ROHS Compliance

- All relays produced by Fujitsu Components are compliant with RoHS directive 2011/65/EU, including commission-delegated directive 2015/863.

2. Recommended lead free solder condition

- Lead free solder plating on relay terminals is Sn-3.0Ag-0.5Cu, unless otherwise specified. This material has been verified to be compatible with PbSn assembly process.
- Recommended solder for assembly: Sn-3.0Ag-0.5Cu.

Flow Solder Condition:

Pre-Heating: maximum 120°C
within 90 sec.

Soldering: dip within 5 sec. at 255°C±5°C solder bath

Relay must be cooled by air immediately after soldering

Solder by Soldering Iron:

Soldering Iron: 30-60W

Temperature maximum 340-360°C

Duration: maximum 3 sec.

We highly recommend that you confirm your actual solder conditions

3. Moisture Sensitivity

- Moisture Sensitivity Level standard is not applicable to electromechanical relays, unless otherwise indicated.

4. Tin Whiskers

- Dipped SnAgCu solder is known as presenting a low risk to tin whisker development.
No considerable length whisker was found by our in house test.

FTR-K3-PV SERIES

Fujitsu Components International Headquarter Offices

Japan FUJITSU COMPONENT LIMITED Shinagawa Seaside Park Tower 20F, 12-4, Higashi-shinagawa 4-chome, Shinagawa- ku, Tokyo, 140-0002, Japan Tel: (81-3) 3450-1682 Email: fcl-contact@cs.jp.fujitsu.com Web: www.fcl.fujitsu.com/	Asia Pacific FUJITSU COMPONENTS ASIA, LTD. 102E Pasir Panjang Road #01-01 Citilink Warehouse Complex Singapore 118529 Tel: (65) 6375-8560 Fax: (65) 6273-3021 Email: fcal@sg.fujitsu.com Web: www.fujitsu.com/sg/products/devices/components	Korea FUJITSU COMPONENTS KOREA LIMITED #403, 180, Pangyoyeok-ro, Bundang-gu, Seongnam-si, Gyeonggi-do, 13524 Korea Tel: (82) 31-708-7108 Fax: (82) 31-709-7108 Email: fcal@sg.fujitsu.com Web: www.fujitsu.com/sg/products/devices/components/
North and South America FUJITSU COMPONENTS AMERICA, INC 1230 E. Arques Ave. M/S 160 Sunnyvale, CA. 94085, USA Tel: (1-408) 745-4900 Fax: (1-408) 745-4970 Email: components@us.fujitsu.com Web: us.fujitsu.com/components	China FUJITSU ELECTRONIC COMPONENTS (SHANGHAI) CO., LTD. Unit 4306, B.M. InterContinental Center 100 Yu Tong Road, Shanghai 200070, China Tel: (86-21) 3253 0998 Fax: (86-21) 3253 0997 Email: fcsh@cn.fujitsu.com Web: www.fujitsu.com/cn/products/devices/components/	
Europe FUJITSU COMPONENTS EUROPE B.V. Diamantlaan 25 2132 WV Hoofddorp Netherlands Tel: (31-23) 5560910 Fax: (31-23) 5560950 Email: info@fceu.fujitsu.com Web: www.fujitsu.com/uk/components	Hong Kong FUJITSU COMPONENTS HONG KONG CO., LTD Unit 2313, Seapower Tower, Concordia Plaza No.1 Science Museum Road, Tsim Sha Tsui, Kowloon, Hong Kong Tel: (852) 2881-8495 Tex: (852) 2894-9512 Email: fcal@sg.fujitsu.com Web: www.fujitsu.com/sg/products/devices/components/	

© 2021 Fujitsu Components Europe B.V. All rights reserved. All trademarks or registered trademarks are the property of their respective owners.

Fujitsu Products are intended for general use, including without limitation, in personal, household and office environments, in buildings and for ordinary use in the industry. Fujitsu Products are not intended to be used in applications where extremely high safety is required ("High Safety Required Applications"), such as, but not limited to, applications in nuclear facilities, in aircraft automatic flight control, in air traffic control, in mass transit system control, in missile launch systems, in weapon systems, in medical equipment for life support or any application involving a direct serious risk of physical injury or death. Please do not use Fujitsu Products without securing the sufficient safety and reliability required for the High Safety Required Applications. In addition, Fujitsu shall not be liable against the customer and/or any third party for any claims or damages arising in connection with the use of Fujitsu Products in the High Safety Required Applications. Fujitsu warrants that its Products, if properly used and serviced, will conform to their specification and will be free from defects in material and workmanship for twelve months from delivery. The implied warranties of merchantability and fitness for a particular purpose and all other warranties, representations and conditions, express or implied by statute, trade usage or otherwise, except as set forth in this warranty, are excluded and shall not apply to the Products delivered.

The contents, data and information in this datasheet are provided by Fujitsu Component Ltd. as a service only to its user and only for general information purposes. The use of the contents, data and information provided in this datasheet is at the users' own risk. Fujitsu has assembled this datasheet with care and will endeavor to keep the contents, data and information correct, accurate, comprehensive, complete and up to date. Fujitsu Components Europe B.V. and affiliated companies do however not accept any responsibility or liability on their behalf, nor on behalf of its employees, for any loss or damage, direct, indirect or consequential, with respect to this datasheet, its contents, data, and information and related graphics and the correctness, reliability, accuracy, comprehensiveness, usefulness, availability and completeness thereof. Nor do Fujitsu Components Europe B.V. and affiliated companies accept on their behalf, nor on behalf of its employees, any responsibility or liability with respect to these datasheets, its contents, data, information and related graphics and the correctness, reliability, accuracy, comprehensiveness, usefulness, availability and completeness thereof. Rev. October 28, 2021