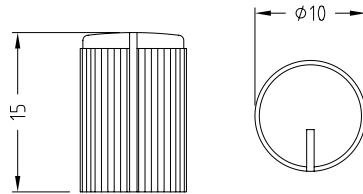
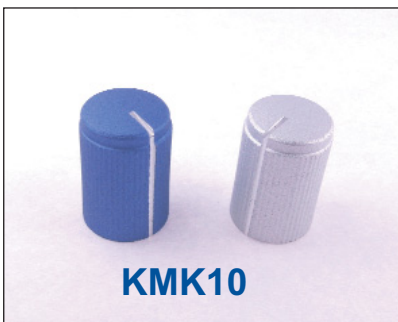


# CLIFF

## KNURLED ALUMINIUM SHELL KNOBS



Knobs for professional equipment - comprising machined aluminium shell on moulded plastic inner. Push on fixing. Max shaft depth 11mm.



### KMK10

6mm Splined shaft

**FC7248** - Silver Anodised

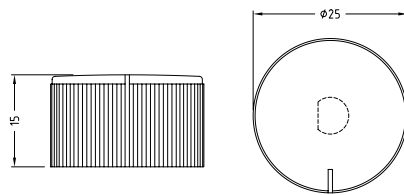
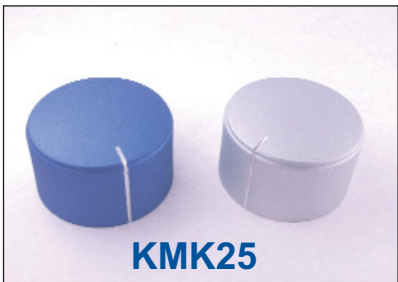
**FC7249** - Black Anodised

6mm USA 'D' shaft

**FC7250** - Silver Anodised

**FC7251** - Black Anodised

Other anodised colours available.



### KMK25

6mm Splined shaft

**FC7252** - Silver Anodised

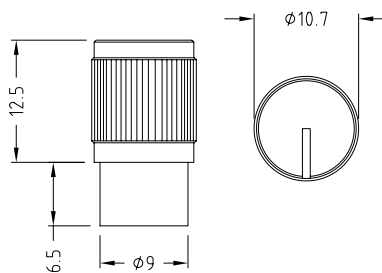
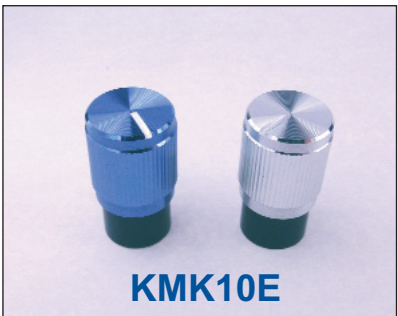
**FC7253** - Black Anodised

6mm USA 'D' shaft

**FC7254** - Silver Anodised

**FC7255** - Black Anodised

Other anodised colours available.



### KMK10E

6mm Splined shaft

**FC7256** - Silver Anodised

**FC7257** - Black Anodised

6mm USA 'D' shaft

**FC7258** - Silver Anodised

**FC7259** - Black Anodised

Other anodised colours available.

For further information, contact: [sales@cliffuk.co.uk](mailto:sales@cliffuk.co.uk)

**Cliff Electronic Components Limited,**  
76 Holmethorpe Avenue, Holmethorpe Ind. Estate,  
Redhill, Surrey RH1 2PF U.K.  
Tel: +44 (0)1737 771375 Fax: +44 (0)1737 766012



Visit us online at:

[www.cliffuk.co.uk](http://www.cliffuk.co.uk)

