

# 2J7A83JB-B16J

## 5GNR Pole/Screw Mount

### Key Features

#### Cable 1: 5GNR

- 617-960 MHz
- 1427-2690 MHz
- 3300-5000 MHz
- 5150-5925 MHz

Pole/Screw Mount

Heavy Duty antenna

High Performance

Ground Plane Independent

Anti-Rotation Mounting

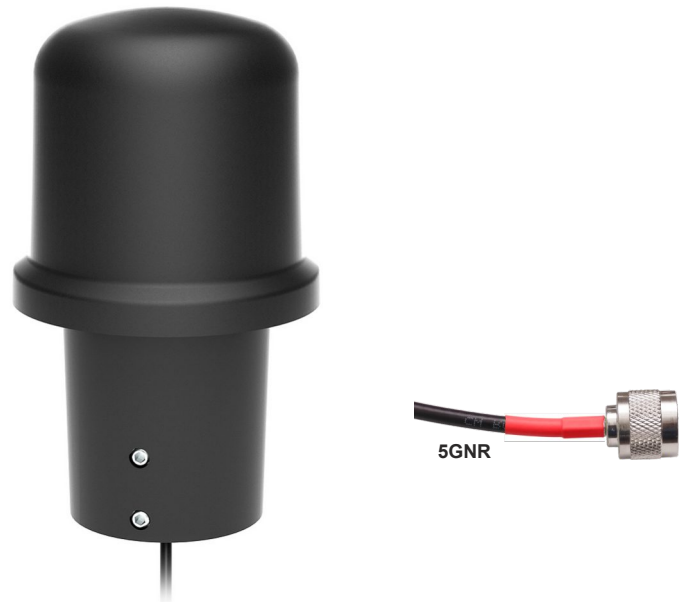
Customizable Cable and Connector

Dimensions:

Ø 96 × H 160 - Pole Mount

Ø 96 × H 91 - Screw Mount

Certificates: IP67, IP69, Ik09



## 1. Antenna and electrical specifications

Cable 1

Parameters	5GNR Antenna			
Technologies	5G, 4G, 3G and 2G			
Standards	5GNR/4GLTE/FirstNet/CBRS/LPWA/CAT-X/CAT-Mx/CAT-NBx/NB-IoT/3G/2G			
Frequency (MHz)	617-960	1427-2690	3300-5000	5150-5925
Band (MHz)	600, 700, 850, 900	1500, 1600, 1700, 1800, 1900, 2000, 2100, 2300, 2500, 2600	3300, 3500, 3600, 3700, 4500	5200, 5500, 5800
5GNR Bands	n5, n8, 12, n20, n28, n71, n81, n82, n83,	n1, n2, n3, n7, n25, n34, n38, n39, n40, n41, n50, n51, n66, n70, n74, n75, n76, n80, n84, n86	n77, n78, n79	
4GLTE Bands	B5, B6, B8, B12, B13, B14, B17, B18, B19, B20, B26, B27, B28, B29, B44, B67, B68, B71, B85	B1, B2, B3, B4, B7, B9, B10, B11, B21, B23, B24, B25, B30, B32, B33, B34, B35, B36, B37, B38, B39, B40, B41, B45, B50, B51, B65, B66, B69, B70, B74, B75, B76	B22, B42, B43, B48, B49, B52	B46, B47, B252, B255
3GCELL Bands	B5, B6, B8, B12, B13, B14, B19, B20, B26	B1, B2, B3, B4, B7, B9, B10, B11, B21, B25, B32, B33, B34, B35, B36, B37, B38, B39, B40	B22	
2GCELL Bands	710, 750, 810T, 850, 900P, 900E, 900R	1800DCS, 1900PCS		
CDMACELL Bands	BC0, BC2, BC3, BC7, BC9, BC10, BC12, BC18, BC19	BC1, BC4, BC6, BC8, BC13, BC14, BC15, BC16, BC20, BC21		
Return Loss (dB)	~-7.9	~-13.3	~-11.4	~-12.9
VSWR	~2.6:1	~1.7:1	~1.9:1	~1.7:1
Efficiency (%)	~44.1	~56.3	~44.0	~42.4
Peak Gain (dBi)	~1.4	~3.6	~3.4	~3.8
Average Gain (dB)	~-3.6	~-2.5	~-3.6	~-3.7
Impedance (Ohm)	50			
Polarisation	Linear			
Radiation Pattern	Omni-Directional			
Max. Input Power (W)	35			
Connector Type	SMA-Male Standard (Other Connectors Available)			
Cable Length	300 cm Standard (Any Cable Length Available)			
Cable Type	LL195 Standard (Other Cables Available)			

### Antenna Measurement Conditions:

Mounted on Metal Plate of 30 x 30 cm

100 cm of Cable LL195

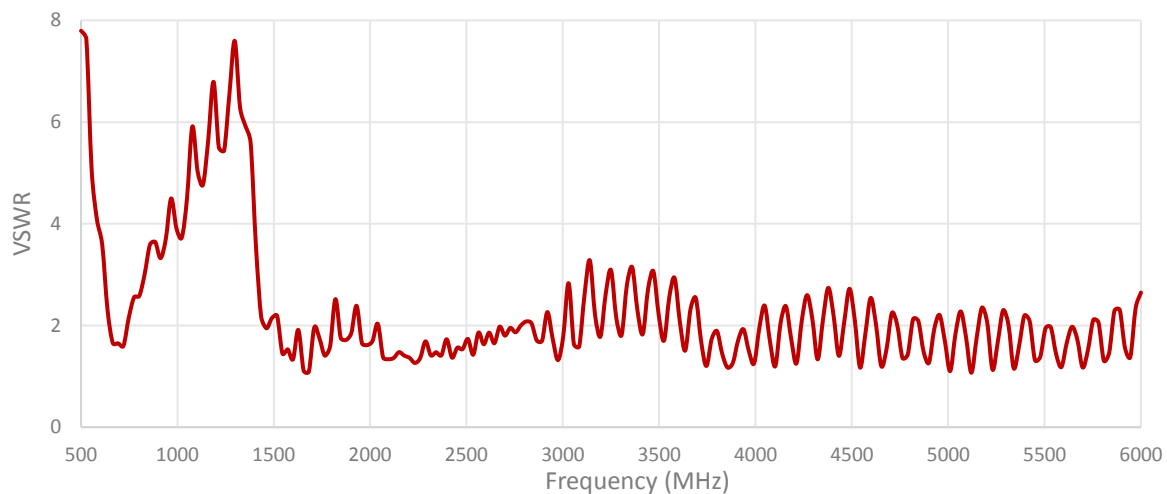
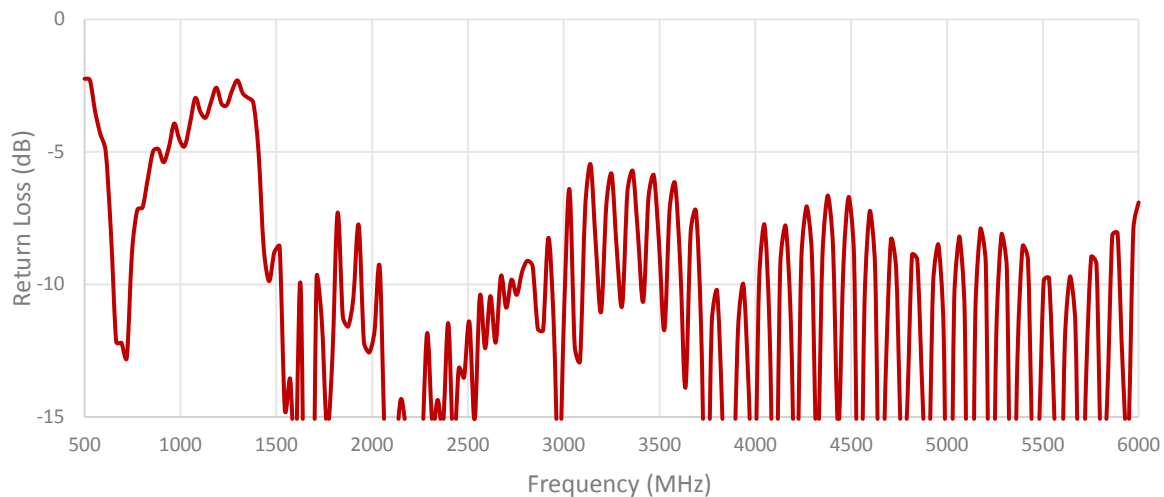
Measured in Certified CTIA 3D Anechoic Chamber

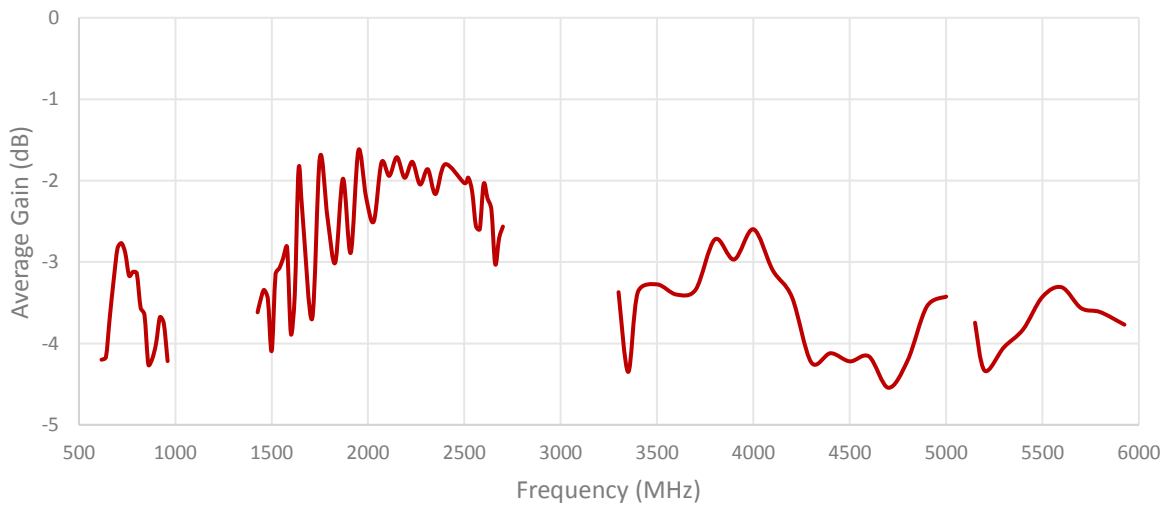
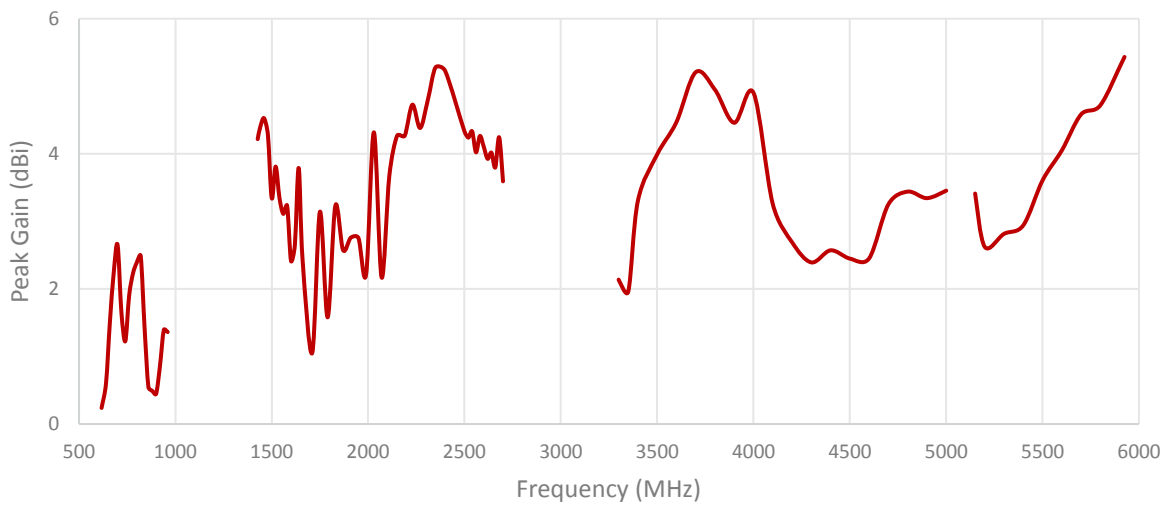
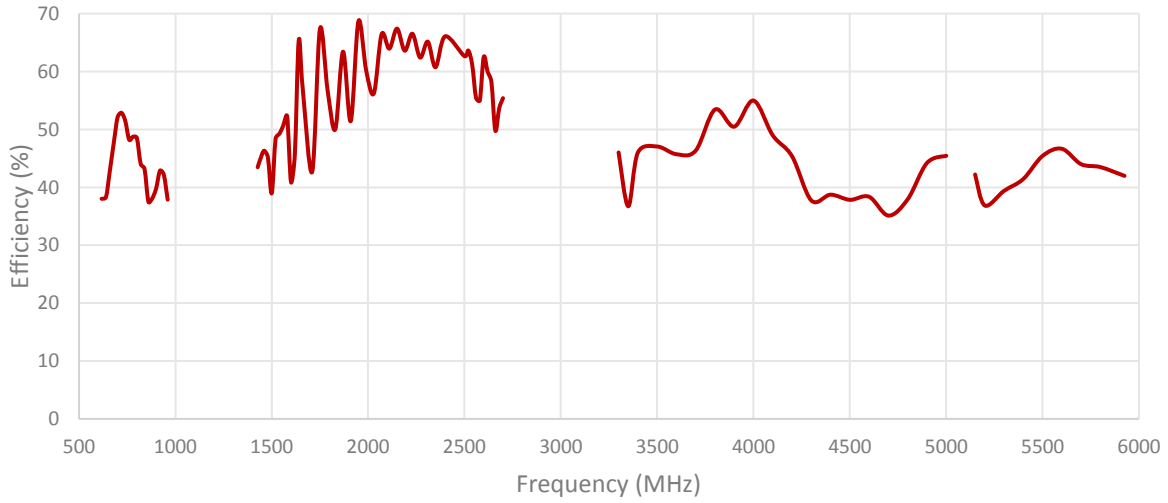
## 2. Mechanical and environmental specifications

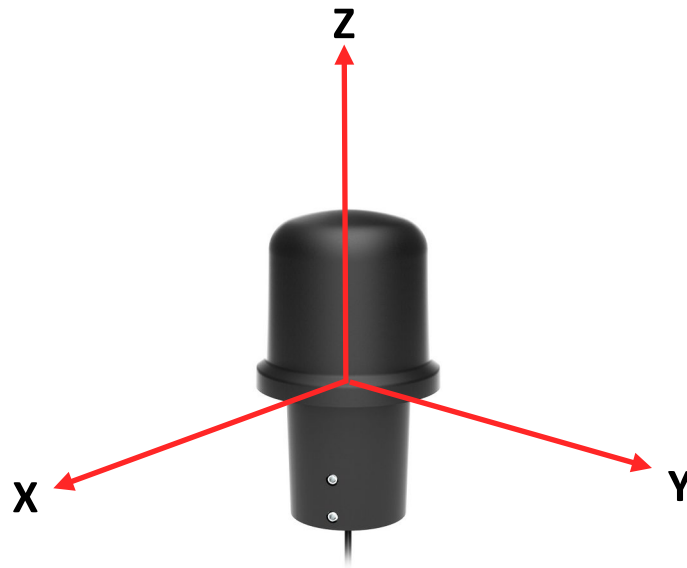
Specifications	2J7A83JB-B16J
<b>Mounting Type</b>	Pole (for pole with max Ø 43mm) / Screw Mount (max 7mm surface thickness)
<b>Dimensions (mm)</b>	Ø 96 × H 160 - Pole Mount / Ø 96 × H 91 - Screw Mount
<b>Max. Tighten Torque (Nm)</b>	6 Nm (for Screw Mount)
<b>Radome</b>	ASA
<b>Radome color</b>	White, Black
<b>Antenna Base</b>	ASA
<b>Operating Temperature (C)</b>	-40 to +85
<b>Storage Temperature (C)</b>	-40 to +85
<b>Substance Compliance</b>	RoHS
<b>Certificates</b>	IP67, IP69, IK09

### 3. Antenna parameters

Cable 1: 5GNR

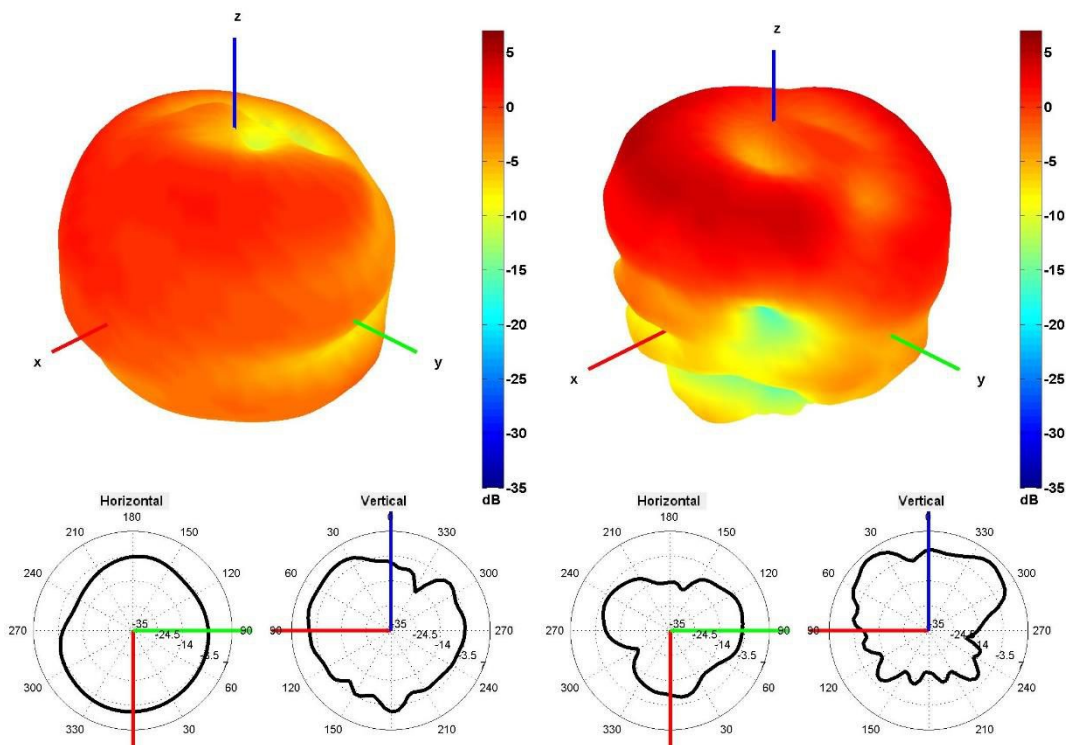




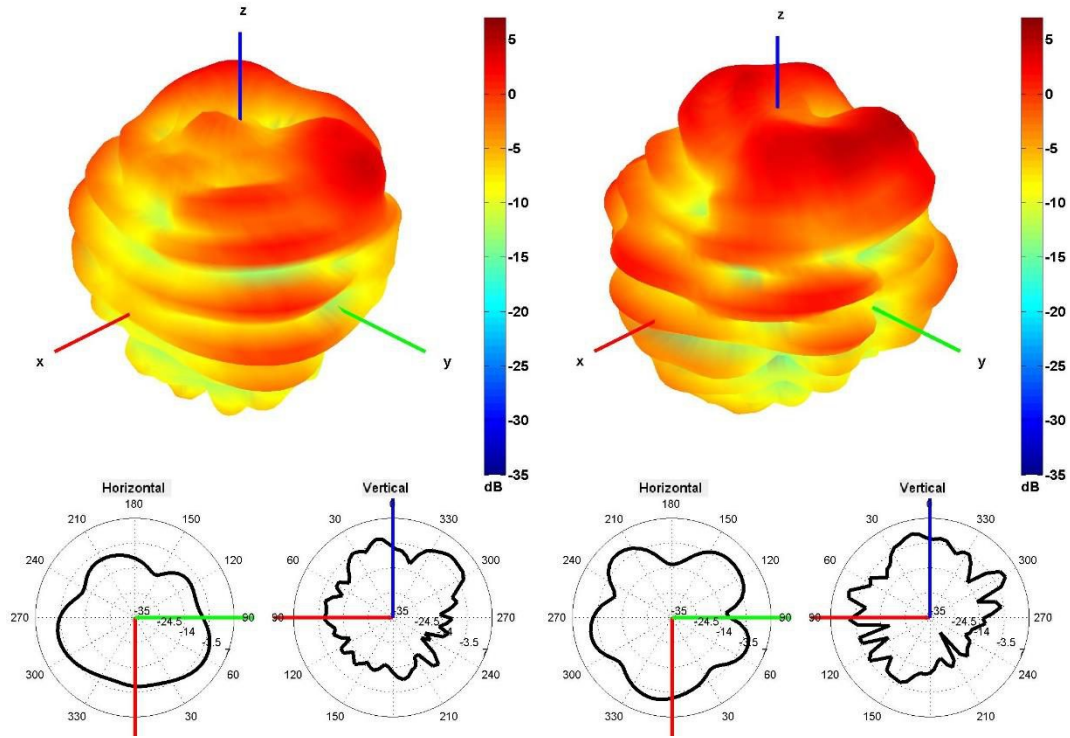


Radiation pattern reference

Cable 1: 5GNR



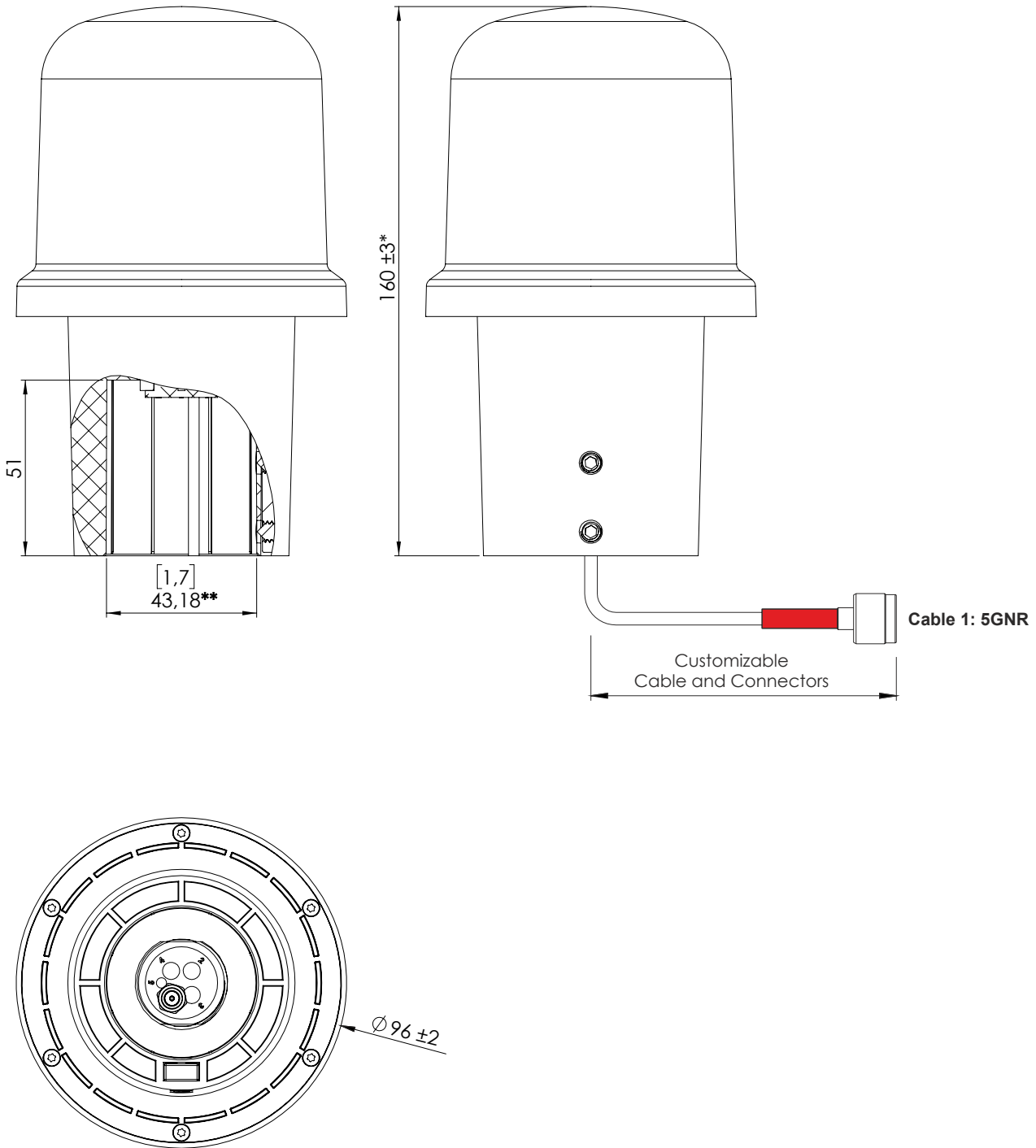
750 and 2500 MHz Radiation pattern



450 and 550 MHz Radiation pattern

## 4. Antenna drawings

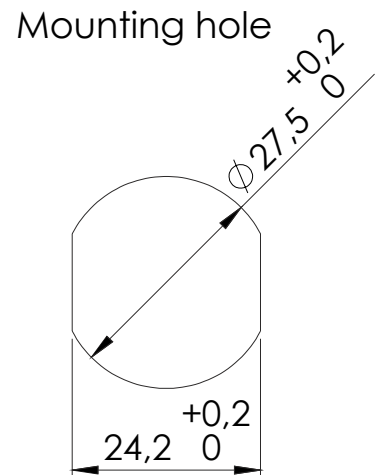
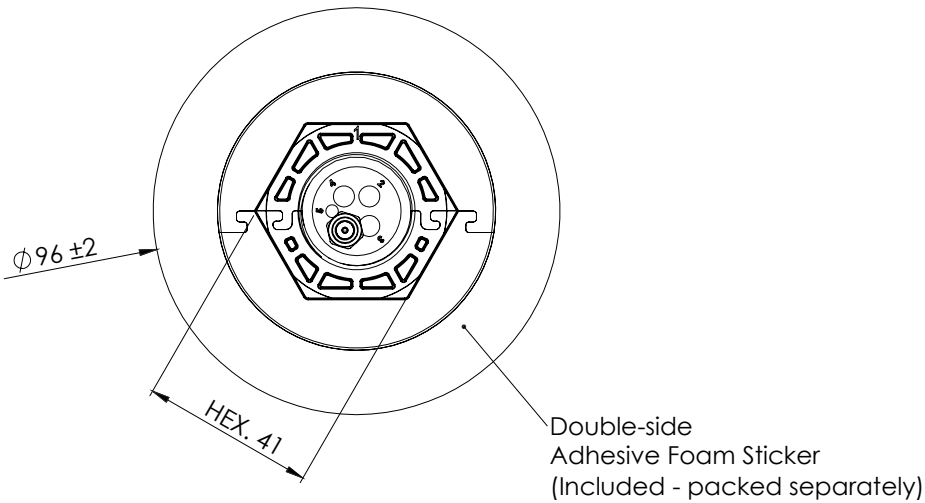
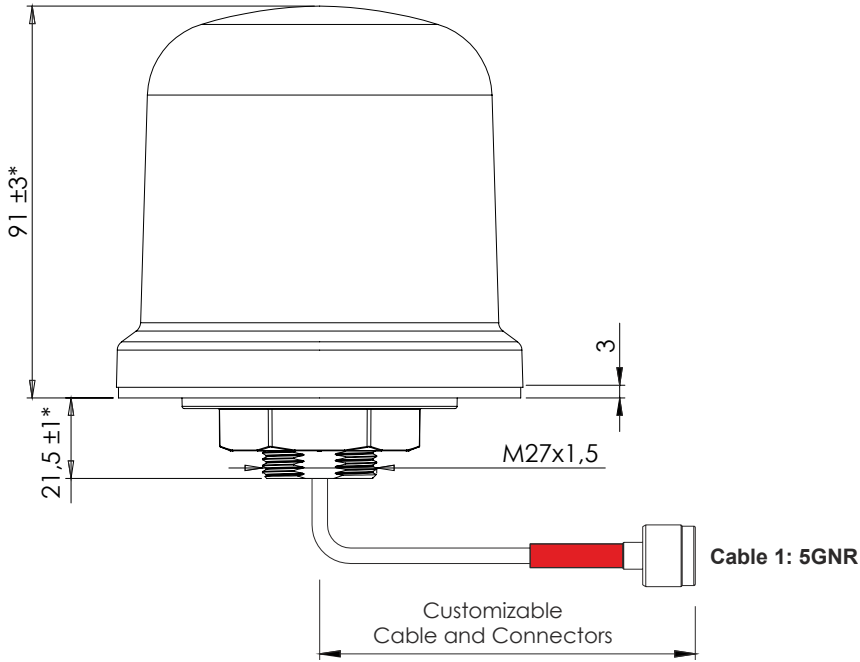
### Pole Mount option using 2JB16J Bracket



Note: Dimensions are in millimeters  
 \*Dimensions are after mounting  
 \*\*Mounting for pole Ø43 mm



## Screw Mount option



**Note: Dimensions are in millimeters**  
**\*Dimensions are after mounting**  
**Max. mounting thickness 7mm**  
**\*\*Mounting Torque= 6 Nm**

## 5. Antenna Images

