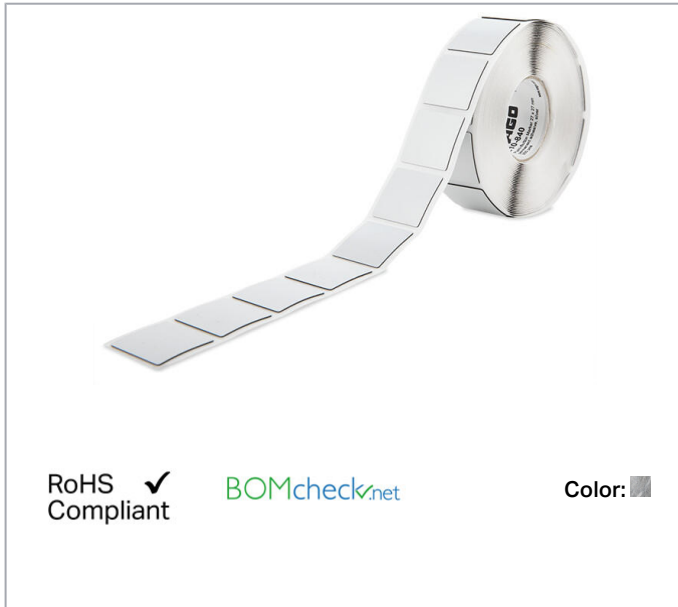


Data sheet | Item number: 210-840

Push-button marker; for frames, to be snapped in or glued in place; 27 x 27 mm; silver-colored

www.wago.com/210-840



Data

Technical data

Suitable	for Siemens
Marking	plain
Pre-assembly	250 markers/reel
Marking device	Smart Printer (Thermal Transfer Printer)

Physical data

Height	27 mm
Width	27 mm
Depth	0.65 mm
Marking surface	27 x 27 mm

Mechanical data

Mounting type	Snap-in or adhesive mounting
Smear resistance	smudge-proof in conjunction with 258-5005 Ink Ribbon

Subject to changes. Please also observe the further product documentation!

WAGO Kontakttechnik GmbH & Co. KG
Hansastr. 27
32423 Minden
Phone: +49571 887-0 | Fax: +49571 887-169
Email: info.de@wago.com | Web: www.wago.com

Do you have any questions about our products?
We are always happy to take your call at +49 (571) 887-44222.

Material data

Color	silver-colored
Material	Polyester
Adhesive information	Acrylic; permanent; foamed
Halogen-free	Yes
Weight	112 g

Environmental requirements

Surrounding air temperature (storage)	≥22 °C
Relative humidity	40 ... 50 %

Commercial data

Packaging type	bag
Country of origin	DK
GTIN	4055143965262
Customs tariff number	39191080888

Required accessories

protection



Item no.: 210-841

Cover; for frames, snap-in type, 27 x 27 mm; halogen-free; transparent

www.wago.com/210-841

Downloads

Documentation

Operating Instructions

210-852 Information on handling print material	1	pdf	Download
	28. 8. 2020	1.0 MB	

Environmental Product Compliance

Compliance Search

Environmental Product Compliance 210-840	URL	Download
Push-button marker; for frames, to be snapped in or glued in place; 27 x 27 mm; silver-colored		

Subject to changes. Please also observe the further product documentation!

Installation Notes

Stick on frame



Remove the push-button label from the carrier film.

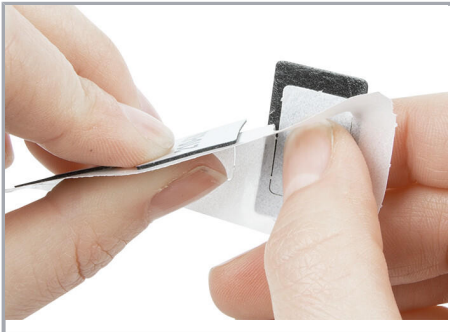


Stick the push-button label onto the push-button frame.



WAGO's push-button label is attached to the push-button frame. A cover cannot be applied.

Snap into frame



Remove the push-button label from the carrier film. Press and hold the pre-punched carrier film to do this.



Snap the push-button label, with the carrier film on the back, on to the push-button frame. Only the area of the push-button label outside the remaining carrier film is adhesive.



Optional: A cover may also be installed on a push-button frame equipped with latches.

Subject to changes. Please also observe the further product documentation!



Push-button label and cover are snapped on to the push-button frame.

Subject to changes. Please also observe the further product documentation!