

Han Brid-Sti-c + Kontakthalt.(crimp) (K)

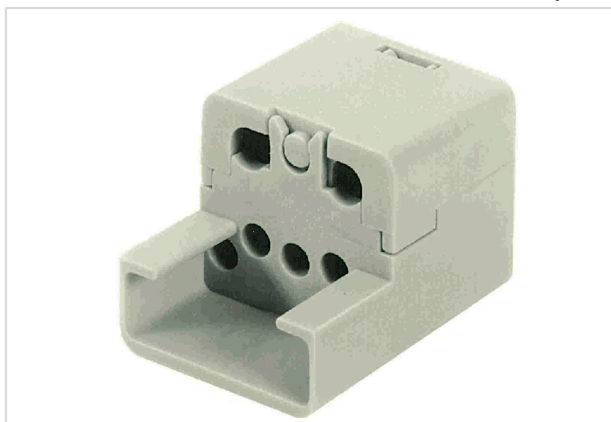


Image is for illustration purposes only. Please refer to product description.

| | |
|--------------------|---|
| Part number | 09 12 004 3001 |
| Specification | Han Brid-Sti-c + Kontakthalt.(crimp) (K) |
| HARTING eCatalogue | https://harting.com/09120043001 |

Identification

| | |
|----------------|----------------------------|
| Category | Inserts |
| Series | Han-Brid® |
| Identification | Han-Brid® FO |
| Specification | Hybrid field bus connector |

Version

| | |
|--------------------|--|
| Gender | Male |
| Size | 3 A |
| Number of contacts | 2 |
| further contacts | + 4 electrical contacts 10 A + option for PE |
| Details | Cable side Unloaded for POF |

Technical characteristics

| | |
|-----------------------|-------------------|
| Rated current | 10 A |
| Rated voltage | 50 V |
| Rated impulse voltage | 0.8 kV |
| Pollution degree | 3 |
| Insulation resistance | $>10^{10} \Omega$ |
| Limiting temperature | -40 ... +70 °C |
| Mating cycles | ≥ 500 |



Pushing Performance
Since 1945

Material properties

| | |
|---|-------------------------------------|
| Material (insert) | Polycarbonate (PC) |
| Colour (insert) | RAL 7032 (pebble grey) |
| Material flammability class acc. to UL 94 | V-0 |
| RoHS | compliant |
| ELV status | compliant |
| China RoHS | e |
| REACH Annex XVII substances | Not contained |
| REACH ANNEX XIV substances | Not contained |
| REACH SVHC substances | Not contained |
| California Proposition 65 substances | Yes |
| California Proposition 65 substances | Lead Nickel |
| Fire protection on railway vehicles | EN 45545-2 (2020-08) + A1 (2023-10) |
| Requirement set with Hazard Levels | R22 (HL 1-3) R23 (HL 1-3) |

Specifications and approvals

| | |
|----------------|--|
| Specifications | IEC 61984 |
| UL / CSA | UL 1977 ECBT2.E235076 CSA-C22.2 No. 182.3 ECBT8.E235076 |
| Approvals | DNV GL |

Commercial data

| | |
|--------------------------------|---|
| Packaging size | 10 |
| Net weight | 5 g |
| Country of origin | Romania |
| European customs tariff number | 85366990 |
| GTIN | 5713140017092 |
| eCl@ss | 27440205 Contact insert for industrial connectors |
| ETIM | EC000438 |
| UNSPSC 24.0 | 39121522 |