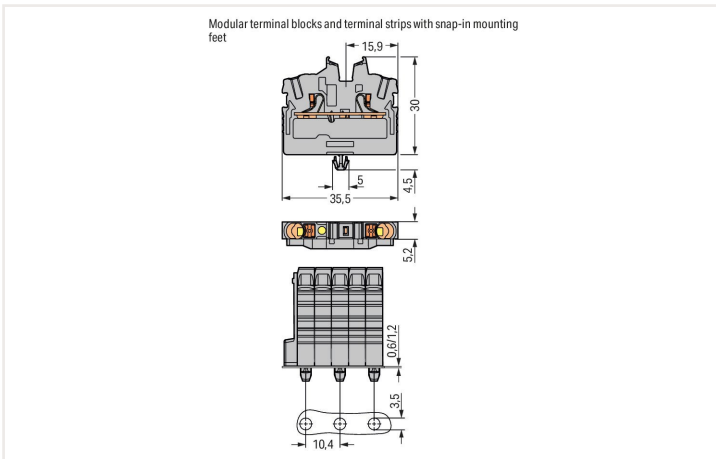
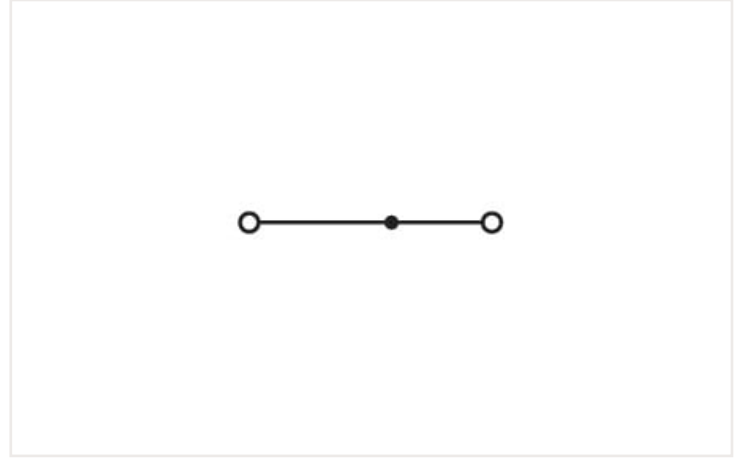


## Data sheet | Item number: 2252-317

2-conductor miniature through terminal block; with push-button; 2.5 mm<sup>2</sup>; with snap-in mounting foot; side and center marking; with test port; Push-in CAGE CLAMP®; 2,50 mm<sup>2</sup>; green-yellow



### Electrical data

#### Ex information

Reference hazardous areas

See Downloads – Documentation – Additional Information: Technical Section; Technical explanations

### Connection data

Total number of connection points	2
Total number of potentials	1
Number of levels	1
Number of jumper slots	1

#### Connection 1

Connection technology	Push-in CAGE CLAMP®
Actuation type	Push-in Push-button
Connectable conductor materials	Copper
Nominal cross-section	2.5 mm <sup>2</sup>
Solid conductor	0.25 ... 4 mm <sup>2</sup> / 22 ... 12 AWG
Solid conductor; push-in termination	1 ... 4 mm <sup>2</sup> / 18 ... 12 AWG
Fine-stranded conductor	0.25 ... 4 mm <sup>2</sup> / 22 ... 12 AWG
Fine-stranded conductor; with insulated ferrule	1 ... 2.5 mm <sup>2</sup> / 18 ... 14 AWG
Fine-stranded conductor; with ferrule; push-in termination	1 ... 2.5 mm <sup>2</sup> / 18 ... 14 AWG

### Connection 1

Note (conductor cross-section)	Depending on the conductor characteristic, a conductor with a smaller cross-section can also be inserted via push-in termination.
Strip length	10 ... 12 mm / 0.39 ... 0.47 inches
Wiring direction	Front-entry wiring

### Physical data

Width	5.2 mm / 0.205 inches
Height from the surface	30 mm / 1.181 inches
Depth	35.5 mm / 1.398 inches

### Mechanical data

Mounting type	Snap-in foot
Marking level	Center/side marking

### Material data

Note (material data)	<a href="#">Information on material data can be found here</a>
Color	green-yellow
Material group	I
Insulation material	Polyamide (PA66)
Flammability class per UL94	V0
Fire load	0.088 MJ
Weight	4.2 g

### Environmental requirements

Processing temperature	-35 ... +85 °C
Continuous operating temperature	-60 ... +105 °C

### Commercial data

ETIM 8.0	EC001284
ETIM 7.0	EC001284
PU (SPU)	100 Pieces
Country of origin VKOrg Germany	DE
GTIN	4066966147094
Customs tariff number VKOrg Germany	85369010000

## Approvals and certificates

### Ex-Approvals



Approval	Standard	Certificate name
AEx Underwriters Laboratories Inc.	UL 60079	E185892 (AEx eb IIC resp. Ex eb IIC)
ATEX Physikalisch Technische Bundesanstalt	EN IEC 60079-0	PTB 20 ATEX 1013 U (II 2 G Ex eb IIC Gb bzw. I M 2 Ex eb I Mb)
IECEX Physikalisch Technische Bundesanstalt	IEC 60079	IECEX PTB 20.0029 U (Ex eb IIC Gb resp. Ex eb I Mb)

### Country specific Approvals



Approval	Standard	Certificate name
CCA DEKRA Certification B.V.	EN 60998	NTR NL 7885
CSA DEKRA Certification B.V.	C22.2	80058059
KEMA/KEUR DEKRA Certification B.V.	EN 60998	71-119680

### UL-Approvals



Approval	Standard	Certificate name
UL Underwriters Laboratories Inc.	UL 1059	E45172

## Downloads

### Environmental Product Compliance

#### Compliance Search

Environmental Product  
Compliance 2252-317



## Documentation

### Additional Information

Technical Section

pdf  
2142.18 KB



## CAD/CAE-Data

### CAD data

2D/3D Models  
2252-317



### CAE data

EPLAN Data Portal  
2252-317



ZUKEN Portal  
2252-317



## 1 Compatible products

### 1.1 System counterpart

#### 1.1.1 Through terminal block



**Item no.: 2252-327**  
 2-conductor miniature through terminal block; with push-button; 2.5 mm<sup>2</sup>; Center terminal block without snap-in mounting foot, without mounting flange; side and center marking; with test port; Push-in CAGE CLAMP®; 2,50 mm<sup>2</sup>; green-yellow

### 1.2 Required accessories

#### 1.2.1 End plate

##### 1.2.1.1 End plate



**Item no.: 2052-391**  
 End plate; gray

### 1.3 Optional accessories

#### 1.3.1 DIN-rail

##### 1.3.1.1 Mounting accessories



**Item no.: 210-154**  
 Aluminum carrier rail; 1000 mm long; 18 mm wide; 7 mm high; silver-colored

#### 1.3.2 Ferrule

##### 1.3.2.1 Ferrule



**Item no.: 216-241**  
 Ferrule; Sleeve for 0.5 mm<sup>2</sup> / 20 AWG; insulated; electro-tin plated; electrolytic copper; gastight crimped; acc. to DIN 46228, Part 4/09.90; white



**Item no.: 216-242**  
 Ferrule; Sleeve for 0.75 mm<sup>2</sup> / 18 AWG; insulated; electro-tin plated; electrolytic copper; gastight crimped; acc. to DIN 46228, Part 4/09.90; gray



**Item no.: 216-262**  
 Ferrule; Sleeve for 0.75 mm<sup>2</sup> / 18 AWG; insulated; electro-tin plated; electrolytic copper; gastight crimped; acc. to DIN 46228, Part 4/09.90; gray



**Item no.: 216-243**  
 Ferrule; Sleeve for 1 mm<sup>2</sup> / AWG 18; insulated; electro-tin plated; electrolytic copper; gastight crimped; acc. to DIN 46228, Part 4/09.90; red



**Item no.: 216-263**  
 Ferrule; Sleeve for 1 mm<sup>2</sup> / AWG 18; insulated; electro-tin plated; electrolytic copper; gastight crimped; acc. to DIN 46228, Part 4/09.90; red



**Item no.: 216-244**  
 Ferrule; Sleeve for 1.5 mm<sup>2</sup> / AWG 16; insulated; electro-tin plated; electrolytic copper; gastight crimped; acc. to DIN 46228, Part 4/09.90; black



**Item no.: 216-264**  
 Ferrule; Sleeve for 1.5 mm<sup>2</sup> / AWG 16; insulated; electro-tin plated; electrolytic copper; gastight crimped; acc. to DIN 46228, Part 4/09.90; black



**Item no.: 216-246**  
 Ferrule; Sleeve for 2.5 mm<sup>2</sup> / AWG 14; insulated; electro-tin plated; electrolytic copper; gastight crimped; acc. to DIN 46228, Part 4/09.90; blue



**Item no.: 216-266**  
 Ferrule; Sleeve for 2.5 mm<sup>2</sup> / AWG 14; insulated; electro-tin plated; electrolytic copper; gastight crimped; acc. to DIN 46228, Part 4/09.90; blue

### 1.3.3 Installation

#### 1.3.3.1 Mounting accessories



**Item no.: 209-137**  
Mounting adapter; can be used as end stop; 6.5 mm wide; gray



**Item no.: 209-120**  
Mounting foot; can be snapped on terminal blocks with snap-in mounting foot; for mounting on relay-modules; 6.4 mm wide; gray

### 1.3.4 Insulation stop

#### 1.3.4.1 Insulation stop



**Item no.: 2002-171**  
Insulation stop; 0.25 - 0.5 mm<sup>2</sup>; 5 pieces/strip; light gray



**Item no.: 2002-172**  
Insulation stop; 0.75 - 1 mm<sup>2</sup>; 5 pieces/strip; dark gray

### 1.3.5 Jumper

#### 1.3.5.1 Jumper



**Item no.: 2002-400**  
Continuous jumper; 2-way; insulated; light gray



**Item no.: 2002-423/000-006**  
Continuous jumper; from 1 to 3; insulated; blue



**Item no.: 2002-423**  
Continuous jumper; from 1 to 3; insulated; light gray



**Item no.: 2002-423/000-005**  
Continuous jumper; from 1 to 3; insulated; red



**Item no.: 2002-406/020-000**  
Delta jumper; insulated; light gray



**Item no.: 2002-410/000-006**  
Jumper; 10-way; insulated; blue



**Item no.: 2002-410**  
Jumper; 10-way; insulated; light gray



**Item no.: 2002-410/000-005**  
Jumper; 10-way; insulated; red



**Item no.: 2002-402/000-006**  
Jumper; 2-way; insulated; blue



**Item no.: 2002-402**  
Jumper; 2-way; insulated; light gray



**Item no.: 2002-402/000-005**  
Jumper; 2-way; insulated; red



**Item no.: 2002-403/000-006**  
Jumper; 3-way; insulated; blue



**Item no.: 2002-403**  
Jumper; 3-way; insulated; light gray



**Item no.: 2002-403/000-005**  
Jumper; 3-way; insulated; red



**Item no.: 2002-404/000-006**  
Jumper; 4-way; insulated; blue



**Item no.: 2002-404**  
Jumper; 4-way; insulated; light gray



**Item no.: 2002-404/000-005**  
Jumper; 4-way; insulated; red



**Item no.: 2002-405/000-006**  
Jumper; 5-way; insulated; blue



**Item no.: 2002-405**  
Jumper; 5-way; insulated; light gray



**Item no.: 2002-405/000-005**  
Jumper; 5-way; insulated; red



**Item no.: 2002-406/000-006**  
Jumper; 6-way; insulated; blue



**Item no.: 2002-406**  
Jumper; 6-way; insulated; light gray



**Item no.: 2002-406/000-005**  
Jumper; 6-way; insulated; red



**Item no.: 2002-407/000-006**  
Jumper; 7-way; insulated; blue



**Item no.: 2002-407**  
Jumper; 7-way; insulated; light gray



**Item no.: 2002-407/000-005**  
Jumper; 7-way; insulated; red



**Item no.: 2002-408/000-006**  
Jumper; 8-way; insulated; blue



**Item no.: 2002-408**  
Jumper; 8-way; insulated; light gray



**Item no.: 2002-408/000-005**  
Jumper; 8-way; insulated; red



**Item no.: 2002-409/000-006**  
Jumper; 9-way; insulated; blue



**Item no.: 2002-409**  
Jumper; 9-way; insulated; light gray



**Item no.: 2002-409/000-005**  
Jumper; 9-way; insulated; red



**Item no.: 2002-440**  
Jumper; from 1 to 10; insulated; light gray



**Item no.: 2002-433**  
Jumper; from 1 to 3; insulated; light gray



**Item no.: 2002-434**  
Jumper; from 1 to 4; insulated; light gray



**Item no.: 2002-435**  
Jumper; from 1 to 5; insulated; light gray



**Item no.: 2002-436**  
Jumper; from 1 to 6; insulated; light gray



**Item no.: 2002-437**  
Jumper; from 1 to 7; insulated; light gray



**Item no.: 2002-438**  
Jumper; from 1 to 8; insulated; light gray



**Item no.: 2002-439**  
Jumper; from 1 to 9; insulated; light gray

### 1.3.5.1 Jumper



**Item no.: 2002-480**  
Staggered jumper; 10-way; insulated; light gray

**Item no.: 2002-481**  
Staggered jumper; 11-way; insulated; light gray

**Item no.: 2002-482**  
Staggered jumper; 12-way; insulated; light gray

**Item no.: 2002-473/011-000**  
Staggered jumper; 2-way; from 1 to 3; insulated; light gray



**Item no.: 2002-472**  
Staggered jumper; 2-way; insulated; light gray

**Item no.: 2002-473**  
Staggered jumper; 3-way; insulated; light gray

**Item no.: 2002-475/011-000**  
Staggered jumper; 3-way; insulated; light gray

**Item no.: 2002-474**  
Staggered jumper; 4-way; insulated; light gray



**Item no.: 2002-475**  
Staggered jumper; 5-way; insulated; light gray

**Item no.: 2002-476**  
Staggered jumper; 6-way; insulated; light gray

**Item no.: 2002-477**  
Staggered jumper; 7-way; insulated; light gray

**Item no.: 2002-478**  
Staggered jumper; 8-way; insulated; light gray



**Item no.: 2002-479**  
Staggered jumper; 9-way; insulated; light gray

**Item no.: 2002-477/011-000**  
Staggered jumper; insulated; light gray

**Item no.: 2002-479/011-000**  
Staggered jumper; insulated; light gray

**Item no.: 2002-481/011-000**  
Staggered jumper; insulated; light gray



**Item no.: 2002-405/011-000**  
Star point jumper; 3-way; insulated; light gray

**Item no.: 210-103**  
Wire commoning chain; insulated; black gray

**Item no.: 210-123**  
Wire commoning chain; insulated; blue

### 1.3.6 Marking

#### 1.3.6.1 Group marker carrier



**Item no.: 2009-191**  
Group marker carrier; gray

**Item no.: 2009-192**  
Group marker carrier; gray

**Item no.: 2009-193**  
Group marker carrier; gray

#### 1.3.6.2 Marker



**Item no.: 2009-145/000-006**  
Mini-WSB Inline; for Smart Printer; 1700 pieces on roll; stretchable 5 - 5.2 mm; plain; snap-on type; blue

**Item no.: 2009-145/000-007**  
Mini-WSB Inline; for Smart Printer; 1700 pieces on roll; stretchable 5 - 5.2 mm; plain; snap-on type; gray

**Item no.: 2009-145/000-023**  
Mini-WSB Inline; for Smart Printer; 1700 pieces on roll; stretchable 5 - 5.2 mm; plain; snap-on type; green

**Item no.: 2009-145/000-012**  
Mini-WSB Inline; for Smart Printer; 1700 pieces on roll; stretchable 5 - 5.2 mm; plain; snap-on type; orange



**Item no.: 2009-145/000-005**  
Mini-WSB Inline; for Smart Printer; 1700 pieces on roll; stretchable 5 - 5.2 mm; plain; snap-on type; red

**Item no.: 2009-145/000-024**  
Mini-WSB Inline; for Smart Printer; 1700 pieces on roll; stretchable 5 - 5.2 mm; plain; snap-on type; violet

**Item no.: 2009-145**  
Mini-WSB Inline; for Smart Printer; 1700 pieces on roll; stretchable 5 - 5.2 mm; plain; snap-on type; white

**Item no.: 2009-145/000-002**  
Mini-WSB Inline; for Smart Printer; 1700 pieces on roll; stretchable 5 - 5.2 mm; plain; snap-on type; yellow



**Item no.: 248-501/000-006**  
Mini-WSB marking card; as card; not stretchable; plain; snap-on type; blue

**Item no.: 248-501/000-007**  
Mini-WSB marking card; as card; not stretchable; plain; snap-on type; gray

**Item no.: 248-501/000-023**  
Mini-WSB marking card; as card; not stretchable; plain; snap-on type; green

**Item no.: 248-501/000-017**  
Mini-WSB marking card; as card; not stretchable; plain; snap-on type; light green



**Item no.: 248-501/000-012**  
Mini-WSB marking card; as card; not stretchable; plain; snap-on type; orange

**Item no.: 248-501/000-005**  
Mini-WSB marking card; as card; not stretchable; plain; snap-on type; red

**Item no.: 248-501/000-024**  
Mini-WSB marking card; as card; not stretchable; plain; snap-on type; violet

**Item no.: 248-501**  
Mini-WSB marking card; as card; not stretchable; plain; snap-on type; white



**Item no.: 248-501/000-002**  
Mini-WSB marking card; as card; not stretchable; plain; snap-on type; yellow

**Item no.: 793-5501/000-006**  
WMB marking card; as card; for terminal block width 5 - 17.5 mm; stretchable 5 - 5.2 mm; plain; snap-on type; blue

**Item no.: 793-5501/000-014**  
WMB marking card; as card; for terminal block width 5 - 17.5 mm; stretchable 5 - 5.2 mm; plain; snap-on type; brown

**Item no.: 793-5501/000-007**  
WMB marking card; as card; for terminal block width 5 - 17.5 mm; stretchable 5 - 5.2 mm; plain; snap-on type; gray

1.3.6.2 Marker



**Item no.: 793-5501/000-023**  
WMB marking card; as card; for terminal block width 5 - 17.5 mm; stretchable 5 - 5.2 mm; plain; snap-on type; green



**Item no.: 793-5501/000-017**  
WMB marking card; as card; for terminal block width 5 - 17.5 mm; stretchable 5 - 5.2 mm; plain; snap-on type; light green



**Item no.: 793-5501/000-012**  
WMB marking card; as card; for terminal block width 5 - 17.5 mm; stretchable 5 - 5.2 mm; plain; snap-on type; orange



**Item no.: 793-5501/000-005**  
WMB marking card; as card; for terminal block width 5 - 17.5 mm; stretchable 5 - 5.2 mm; plain; snap-on type; red



**Item no.: 793-5501/000-024**  
WMB marking card; as card; for terminal block width 5 - 17.5 mm; stretchable 5 - 5.2 mm; plain; snap-on type; violet



**Item no.: 793-5501**  
WMB marking card; as card; for terminal block width 5 - 17.5 mm; stretchable 5 - 5.2 mm; plain; snap-on type; white



**Item no.: 793-5501/000-002**  
WMB marking card; as card; for terminal block width 5 - 17.5 mm; stretchable 5 - 5.2 mm; plain; snap-on type; yellow



**Item no.: 793-501/000-006**  
WMB marking card; as card; not stretchable; plain; snap-on type; blue



**Item no.: 793-501/000-007**  
WMB marking card; as card; not stretchable; plain; snap-on type; gray



**Item no.: 793-501/000-023**  
WMB marking card; as card; not stretchable; plain; snap-on type; green



**Item no.: 793-501/000-017**  
WMB marking card; as card; not stretchable; plain; snap-on type; light green



**Item no.: 793-501/000-012**  
WMB marking card; as card; not stretchable; plain; snap-on type; orange



**Item no.: 793-501/000-005**  
WMB marking card; as card; not stretchable; plain; snap-on type; red



**Item no.: 793-501/000-024**  
WMB marking card; as card; not stretchable; plain; snap-on type; violet



**Item no.: 793-501**  
WMB marking card; as card; not stretchable; plain; snap-on type; white



**Item no.: 793-501/000-002**  
WMB marking card; as card; not stretchable; plain; snap-on type; yellow



**Item no.: 2009-115/000-006**  
WMB-Inline; for Smart Printer; 1500 pieces on roll; stretchable 5 - 5.2 mm; plain; snap-on type; blue



**Item no.: 2009-115/000-007**  
WMB-Inline; for Smart Printer; 1500 pieces on roll; stretchable 5 - 5.2 mm; plain; snap-on type; gray



**Item no.: 2009-115/000-023**  
WMB-Inline; for Smart Printer; 1500 pieces on roll; stretchable 5 - 5.2 mm; plain; snap-on type; green



**Item no.: 2009-115/000-017**  
WMB-Inline; for Smart Printer; 1500 pieces on roll; stretchable 5 - 5.2 mm; plain; snap-on type; light green



**Item no.: 2009-115/000-012**  
WMB-Inline; for Smart Printer; 1500 pieces on roll; stretchable 5 - 5.2 mm; plain; snap-on type; orange



**Item no.: 2009-115/000-005**  
WMB-Inline; for Smart Printer; 1500 pieces on roll; stretchable 5 - 5.2 mm; plain; snap-on type; red



**Item no.: 2009-115/000-024**  
WMB-Inline; for Smart Printer; 1500 pieces on roll; stretchable 5 - 5.2 mm; plain; snap-on type; violet



**Item no.: 2009-115**  
WMB-Inline; for Smart Printer; 1500 pieces on roll; stretchable 5 - 5.2 mm; plain; snap-on type; white



**Item no.: 2009-115/000-002**  
WMB-Inline; for Smart Printer; 1500 pieces on roll; stretchable 5 - 5.2 mm; plain; snap-on type; yellow

1.3.6.3 Marker carrier



**Item no.: 2002-161**  
Adaptor; gray



**Item no.: 2009-198**  
Adaptor; gray

1.3.6.4 Marking strip



**Item no.: 2009-110**  
Marking strips; for Smart Printer; on reel; not stretchable; plain; snap-on type; white

### 1.3.7 Push-in type wire jumper

#### 1.3.7.1 Jumper



**Item no.: 2009-414**  
Push-in type wire jumper; 1.5 mm<sup>2</sup>; insulated; 110 mm long; black



**Item no.: 2009-414/000-005**  
Push-in type wire jumper; 1.5 mm<sup>2</sup>; insulated; 110 mm long; black



**Item no.: 2009-416**  
Push-in type wire jumper; 1.5 mm<sup>2</sup>; insulated; 250 mm long; black



**Item no.: 2009-414/000-006**  
Push-in type wire jumper; insulated; 110 mm long; black



**Item no.: 2009-412**  
Push-in type wire jumper; insulated; 60 mm long; black

### 1.3.8 Test and measurement

#### 1.3.8.1 Testing accessories



**Item no.: 2009-174**  
Test plug adapter; for 4 mm Ø test plugs; for testing TOPJOB®S rail-mounted terminal blocks; gray



**Item no.: 210-136**  
Test plug; 2 mm Ø; with 500 mm cable; red



**Item no.: 2009-182**  
Testing tap; for max. 2.5 mm<sup>2</sup>; tool-free connection for individual test wires 0.08 - 2.5 mm; gray



**Item no.: 2002-649**  
TOPJOB®S L-type spacer module; modular; e.g., for bridging commoned terminal blocks; gray



**Item no.: 2002-611**  
TOPJOB®S L-type test plug module; modular; 1-pole; 2,50 mm<sup>2</sup>; gray

### 1.3.9 Tool

#### 1.3.9.1 Operating tool



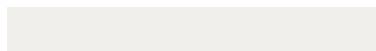
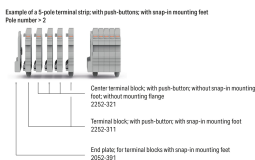
**Item no.: 210-658**  
Operating tool; Blade: 3.5 x 0.5 mm; with a partially insulated shaft; angled; short; multicoloured



**Item no.: 210-720**  
Operating tool; Blade: 3.5 x 0.5 mm; with a partially insulated shaft; multicoloured

### Installation notes

#### Installation





### Conductor termination



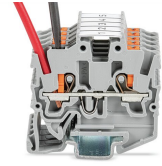
Insert solid conductors via push-in termination.



Insert ferruled conductors via push-in termination.

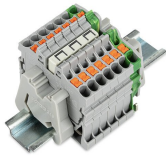


Insert fine-stranded conductors via operating tool.

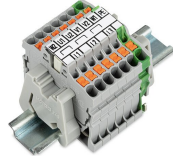


Remove all conductors via operating tool.

### Commoning



Insert a delta jumper and push down until it hits the backstop (example shows terminal blocks with push-buttons).



Marking strip (2009-110) inserted in the marking slot with jumper symbols of the inserted jumper (delta jumper) (example shows terminal blocks with push-buttons)



Insert a star point jumper and push down until it hits the backstop (example shows terminal blocks with push-buttons).



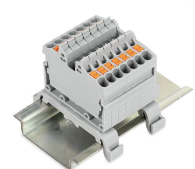
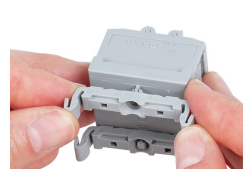
Marking strip (2009-110) inserted in the marking slot with jumper symbols of the inserted jumper (2000-405/011-000 Delta Jumper) (example shows terminal blocks with push-buttons)

### Testing



Testing with a 2 mm Ø 210-136 Test Plug (max. 42 V).

### Installation



### Marking



Snapping a marking strip into the marker slot.



Snapping a marking strip (2009-110) into a marker slot.