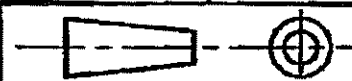


1 OBSOLETE PARTS: OBSOLETE CIS STREAMLINING PER D.RENAUD/D.SINISI
 2 OBSOLETE

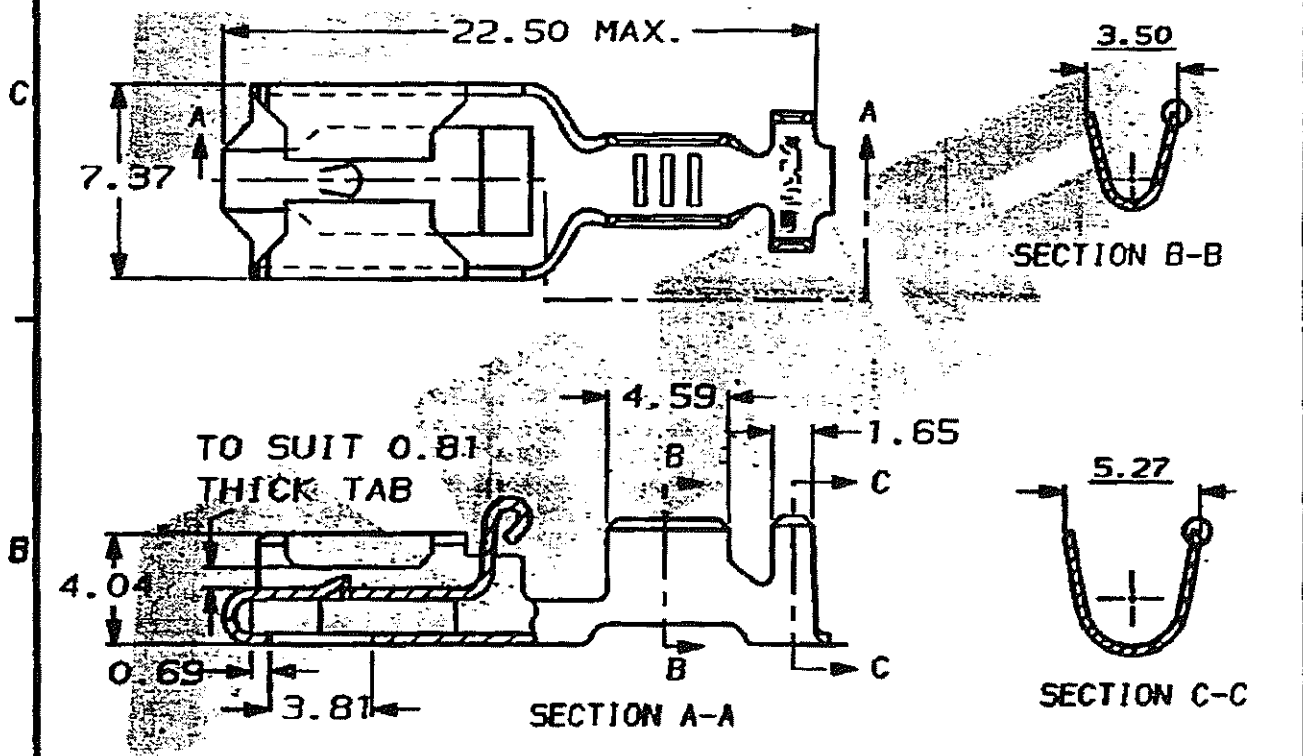
DO NOT SCALE

DIMENSIONS IN MM.



C.A.D. FILE CODE
S. C154718.AD

PART NUMBER	MATERIAL	FINISH	REELING	LOOSE PIECE (REF. ONLY)
154718-1	BRASS	NONE	STANDARD	341002-1
154718-2	PHOS. BRONZE	NONE	STANDARD	341002-2
154718-3	BRASS	TIN	STANDARD	341002-3
154718-4	PHOS. BRONZE	TIN	STANDARD	341002-4 2
1 154718-5	PHOS. BRONZE	NONE	STANDARD	341002-5
154718-6	BRASS	PRE-TIN	STANDARD	341002-6
154718-7	PHOS. BRONZE	PRE-TIN	STANDARD	341002-7
154718-8	BRASS	SILVER	STANDARD	341002-8
154718-9	BRASS	SILVER	STANDARD	341002-9
1-154718-0	BRASS	PRE-TIN	STANDARD	---
1-154718-1	BRASS	NONE	REV. REEL VERSION-1	---
1-154718-2	PHOS. BRONZE	NONE	REV. REEL VERSION-2	---
1-154718-3	PHOS. BRONZE	PRE-TIN	STANDARD	---
2 1-154718-4	BRASS	TIN	REV. REEL VERSION-3	---
1-154718-5	PHOS. BRONZE	TIN	REV. REEL VERSION-4	---



WIRE RANGE 0.7 TO 2.0mm² INSULATION RANGE 2.4 TO 3.2mm DIA.

CUSTOMER DWG FOR REFERENCE ONLY RELEASED FOR PUBLICATION ORIGINAL 1974

DR. D.A. BARRATT 27.11.91
 CH. D. TERRY APP. D.A. BARRATT

TE Connectivity

POSITIVE LOCK RECEPTACLE

AD2	REVISED PER ECO-11.005150	RK/HMR	28MAR11	SCALE	LOC	SIZE	DWG. No.	REV	SHEET
REV	ECN	APPROVED	DATE	4/1	E	A4	C154718	AD2	1/1