

2J7515M-433

433 MHz ISM Magnetic Mount

Key Features

- 433 MHz ISM
- 433-435 MHz
- Magnetic Mount
- High Performance
- Ground Plane Dependent
- Customizable Cable and Connector
- Dimensions \varnothing 54 x 80 mm
- Certificates IP67, IP69



1. Antenna and electrical specifications

| Parameters | 433 MHz ISM Antenna |
|-----------------------------|--|
| Standards | ISM |
| Band (MHz) | 433 MHz |
| Frequency (MHz) | 433-435 |
| Return Loss (dB) | ~-16.3 |
| VSWR | ~1.4:1 |
| Efficiency (%) | ~41.9 |
| Peak Gain (dBi) | ~1.1 |
| Average Gain (dB) | ~-3.8 |
| Impedance (Ohm) | 50 |
| Polarisation | Linear |
| Radiation Pattern | Omni-Directional |
| Max. Input Power (W) | 25 |
| Connector Type | SMA-Male Standard (Other Connectors Available) |
| Cable Length | 300 cm Standard (Any Cable Length Available) |
| Cable Type | LL100 Standard (Other Cables Available) |

Antenna Measurement Conditions:

Mounted on 30 x 30 cm Metal Plate

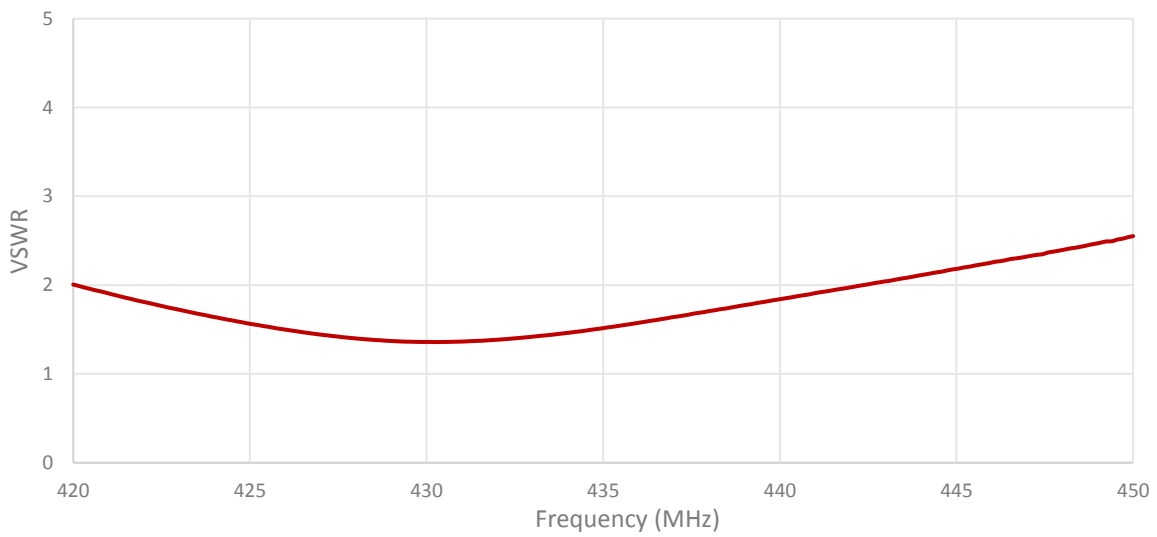
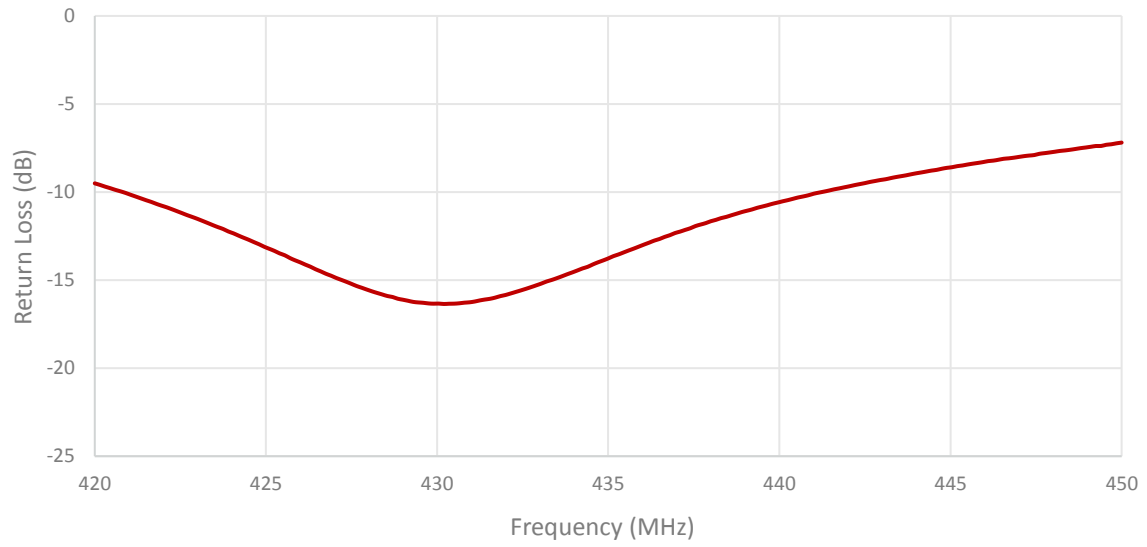
200 cm of LL100

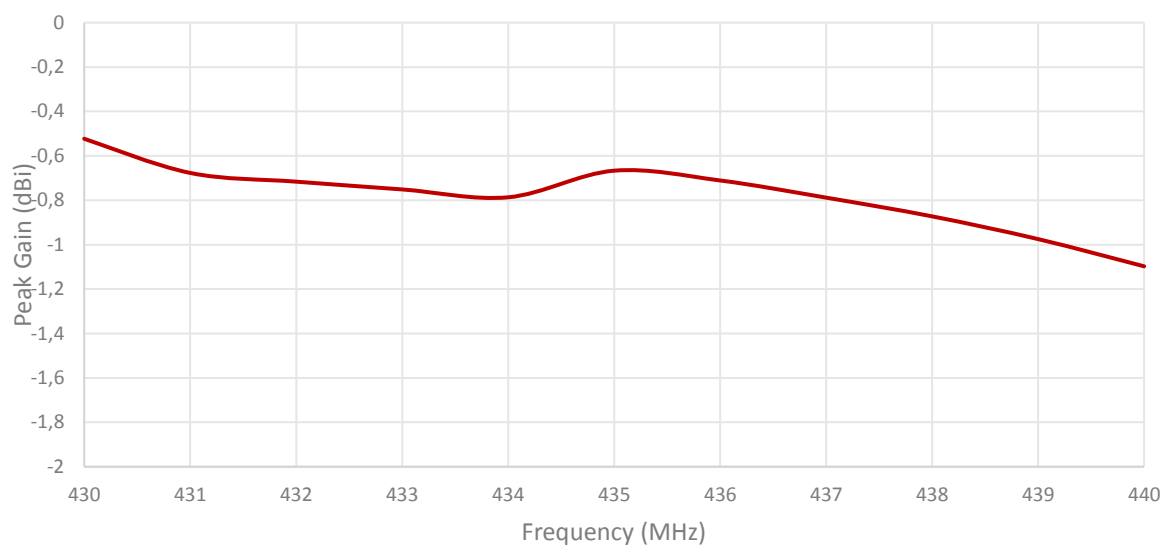
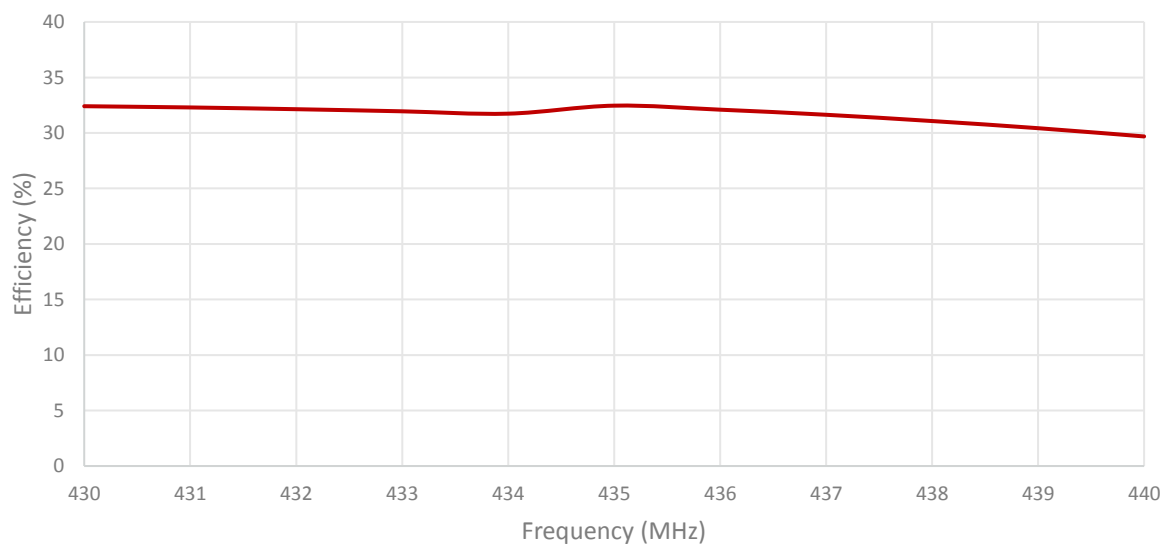
Measured in Certified CTIA 3D Anechoic Chamber

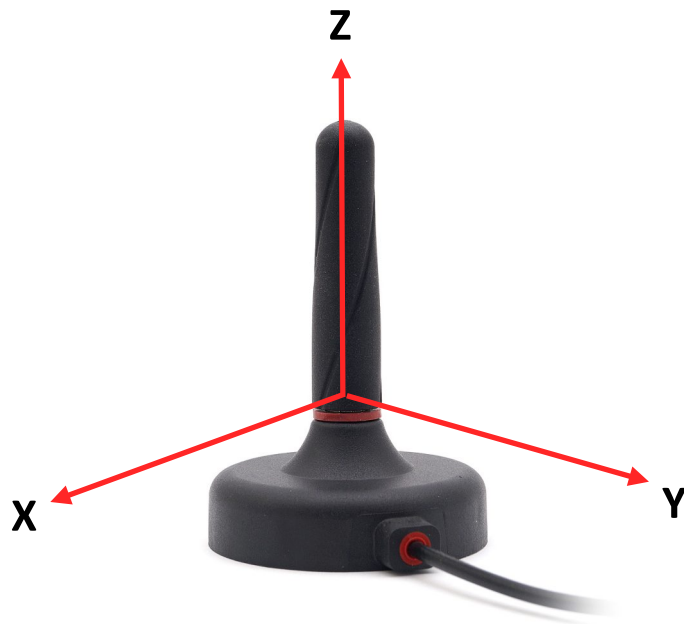
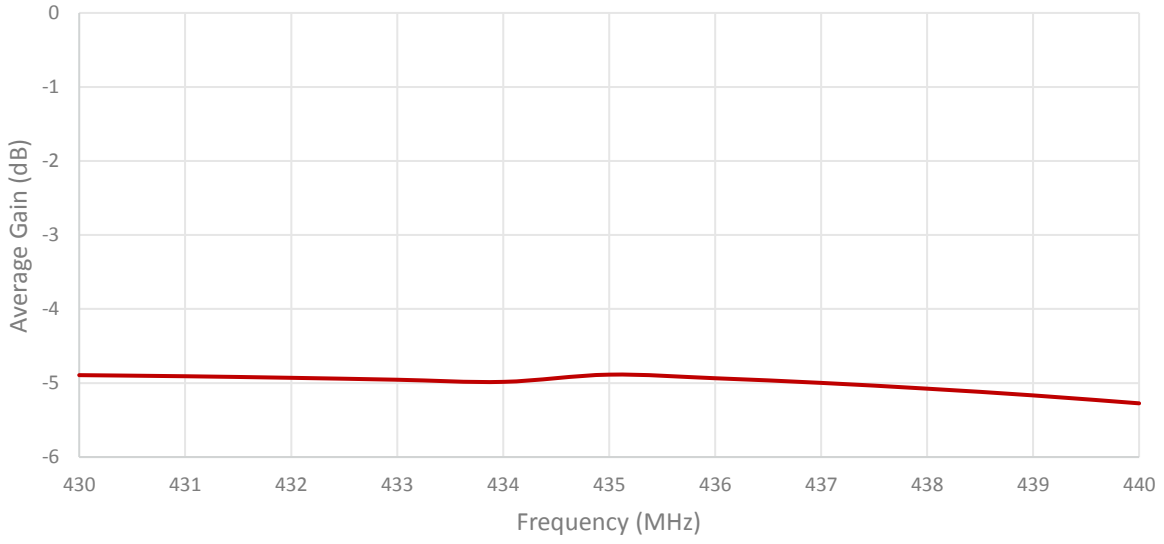
2. Mechanical and environmental specifications

| Specifications | 2J7515M-433 |
|----------------------------------|----------------|
| Mounting Type | Magnetic Mount |
| Dimensions (mm) | Ø 54 × 80 |
| Radome | ASA |
| Radome color | Black |
| Antenna Base | Zamak |
| Gasket | TPE |
| Operating Temperature (C) | -40 to +85 |
| Storage Temperature (C) | -40 to +85 |
| Substance Compliance | RoHS |
| Certificates | IP67, IP69 |

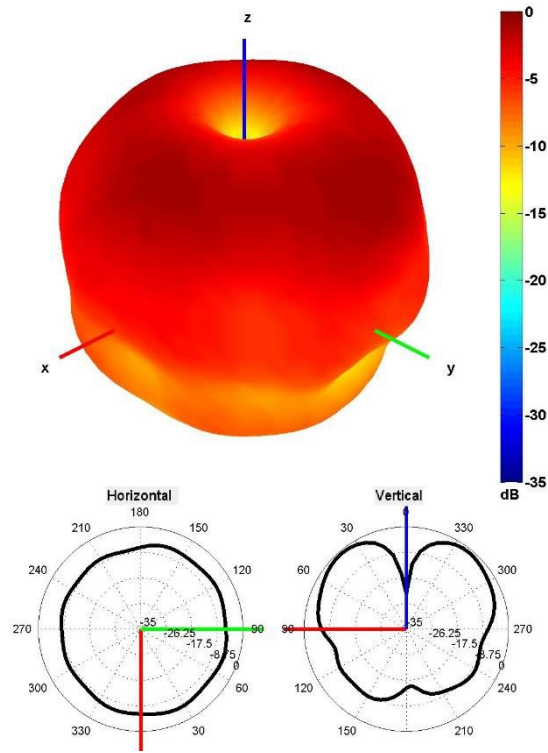
3. Antenna parameters





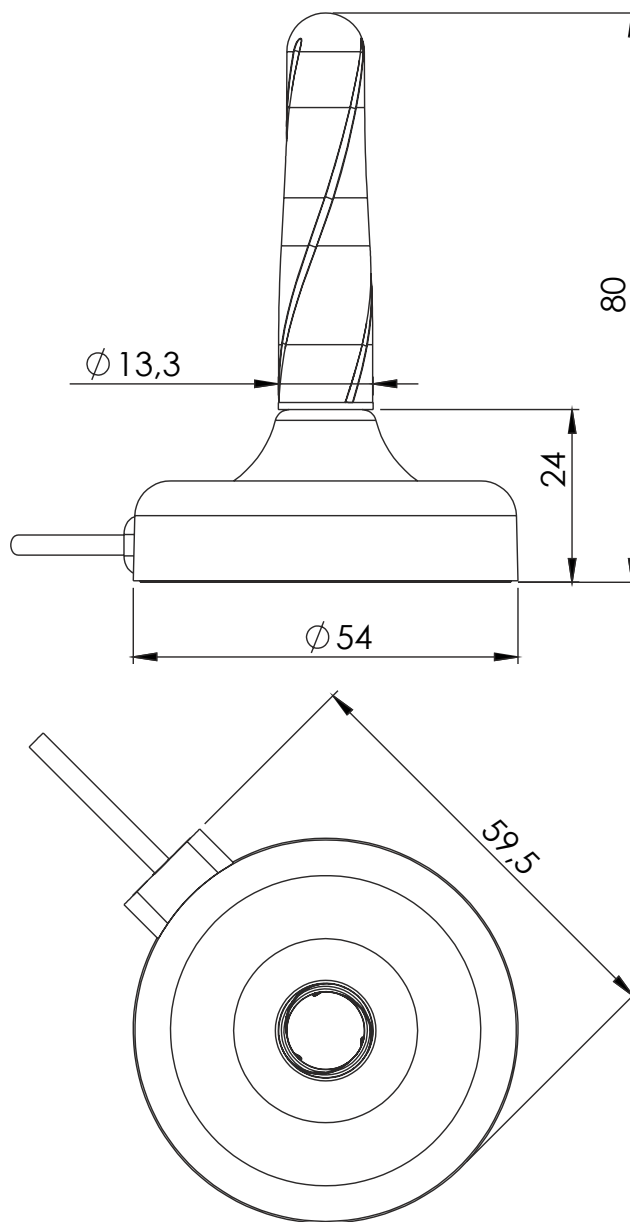


Radiation pattern reference



433 MHz Radiation pattern

4. Antenna drawings



5. Antenna Images

