

U.I. Lapp GmbH	DATASHEET	 LAPP GROUP
	EPIC® H-A 3 Surface Mount Base	10424500 12.09.2012

Innovative metal and plastic housing design
Housing in plastic or metal version. For power supply in the smallest possible space



Application range

Machine and equipment manufacturing
Control engineering
Electronic laboratory

Product features

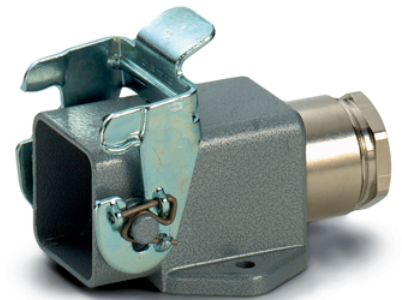
Surface-mount base
1 lever
1 cable entry
Versions with / without cable gland

Remark

Photographs are not to scale and do not represent detailed images of the respective products.

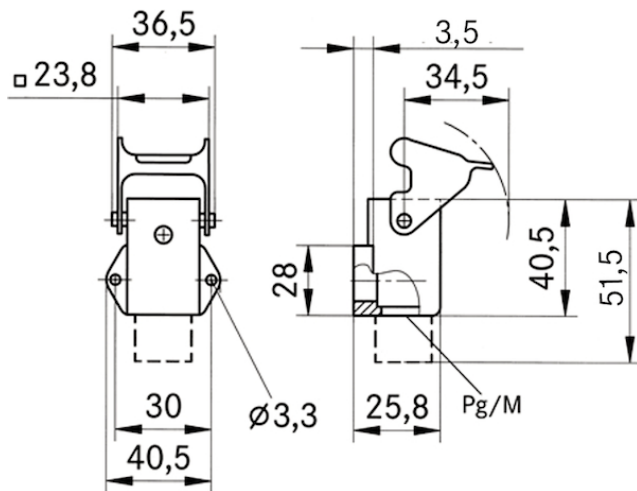
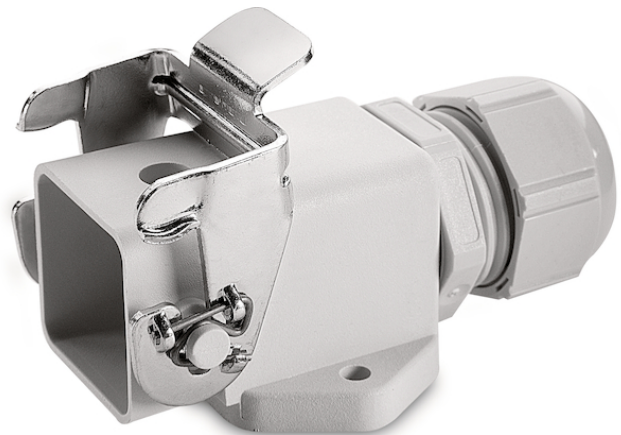
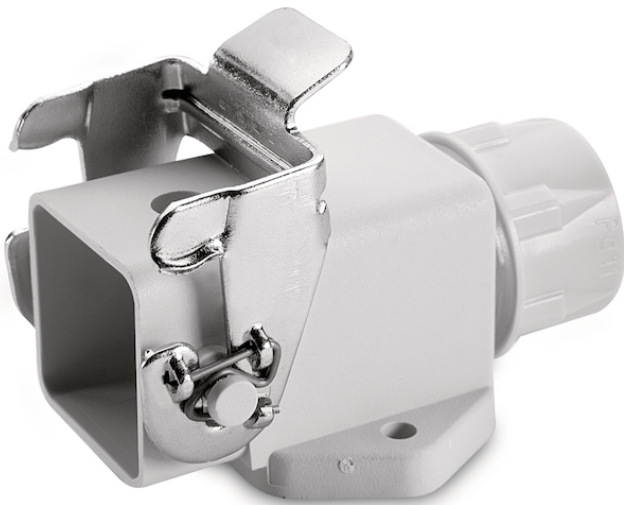
Technical Data

Dimensions incl. cable gland:	57.5
Cable clamping range:	6,5 - 12
Cable gland:	yes
Colour:	grey
Material:	Zinc die-casting
PG:	11
Article:	H-A 3 MAgsv
Material:	Housing: powder-coated zinc die-casting, grey Lever: zinc-plated steel Sealing: NBR Housing: grey thermoplastic, black Lever: zinc-plated steel Sealing: NBR
Protection rating:	IP 65 (latched)
Temperature range:	-40 °C to +100 °C, short-term up to +125 °C



Product Management	Document: EPIC® H-A 3 Surface Mount Base	1 / 2
--------------------	--	-------

U.I. Lapp GmbH	DATASHEET	 LAPP GROUP
	EPIC® H-A 3 Surface Mount Base	10424500 12.09.2012



Product Management	Document: EPIC® H-A 3 Surface Mount Base	2 / 2
--------------------	--	-------