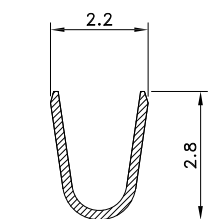


■ SPECIFICATIONS

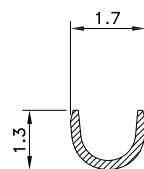
- Current Rating : 2A AC/DC
- Withstanding Voltage : 800V AC/minute
- Insulation Resistance : 1,000M $\Omega$  min
- Temperature Range : - 25°C to + 85°C
- Contact Resistance : 20m $\Omega$  max
- Applicable Wires : AWG # 22 - 28
- Material : Phos.Bronze
- Thickness : 0.2mm
- Q' ty : 10,000 pcs/Reel

721-70-T 00009  
1 2

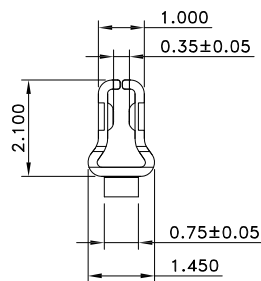
1. T: Tin plated
2. Pinrex internal code.



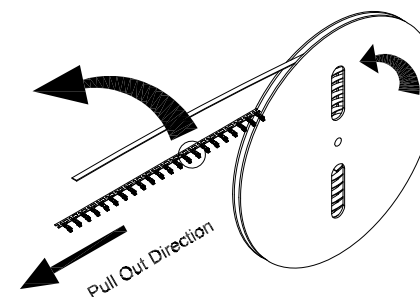
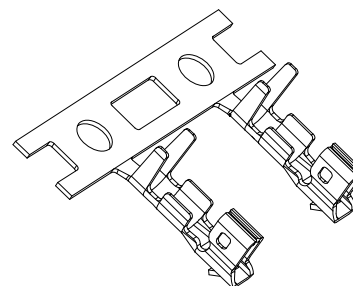
Section A-A

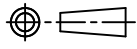



Section B-B



Section C-C



				TOLERANCE		 UNITS : mm		OLD PART NO.		TITLE		 頻銳科技股份有限公司 PINREX TECHNOLOGY CORP.	
				.0 =±.30		SCALE NONE		SHEET 1 OF 1		2.0mm SERIES WIRE TO BOARD TERMINAL		DRAW NO. 721-70-T00009 (B版)	
B UPDATE		2021/07/06		.00 =±.20		SIZE A4		DRAWER 姜文慧		CHECK 李剑		NEW PART NO. 721-70-T00009	
A RELEASE		2012/02/02		.000 =±.XXX				SHEET REV. B		APP'D 李剑			
REV.	DESCRIPTION	DATE		.0000=±.									
				ANG.=±3'									