

2J6A42B (DATASHEET)

Type
Frequencies

GSM-Railway antenna/ISM antenna

GSM-R (876 - 924 MHz)

ISM (868/915 MHz)

Mounting
Revision

Body Mount

00



P. Tipul



D. Noble

1. SPECIFICATION

1.1. Electrical Specifications

Mobile (Cable 1)

| | |
|----------------|--|
| Frequencies | GSMR (871-960 MHz) / ISM (868-928 MHz) |
| Impedance | 50 Ohms |
| Polarization | Vertical |
| Gain | 4 dBi |
| VSWR | <2:1 |
| Power handling | 50W |

1.2. General Specifications

| | |
|-----------------------|-------------------|
| Certificates | IK67, IK09, IP69K |
| Operating temperature | -40°C to +85°C |

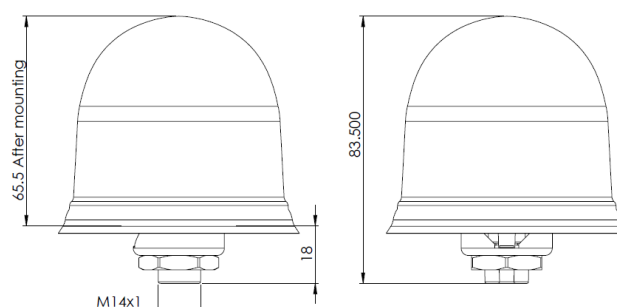
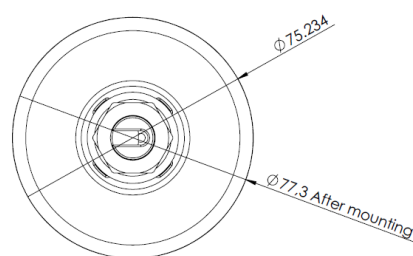
1.3. Connection Specifications

| | |
|-----------------|--------|
| Connector type: | SMA |
| Cable: | RG174U |
| Cable length: | 30 cm |

For different cable length and connector type ask our sales team.

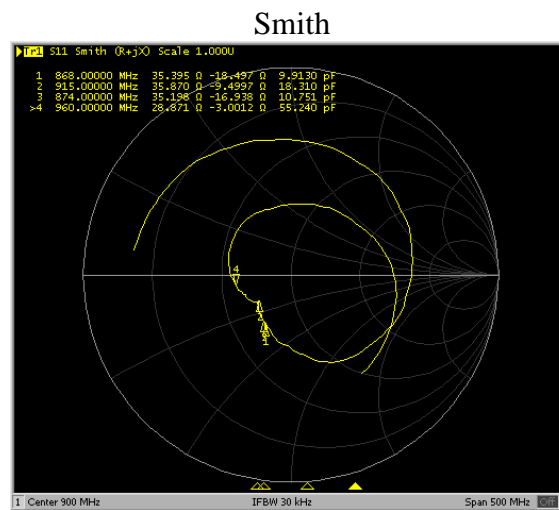
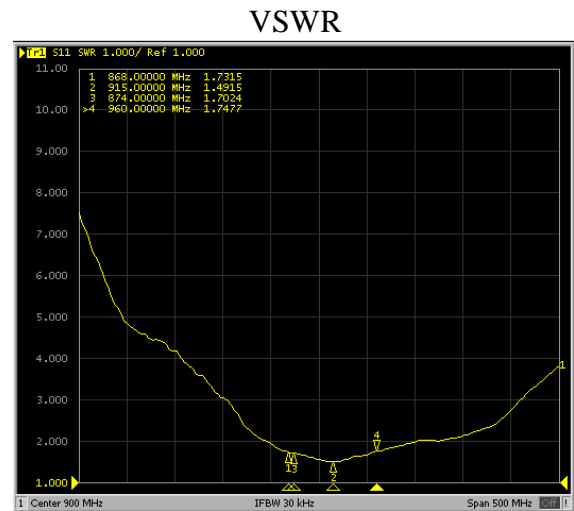
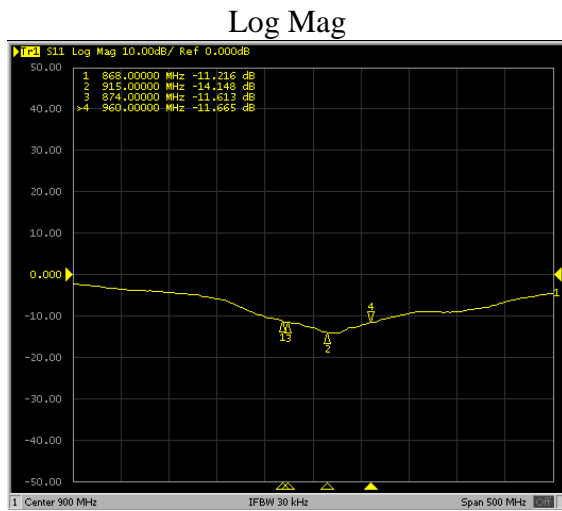
1.4. Mechanical Specifications and Dimensions

| | |
|------------------|---|
| Material: | Base: Zamak / Gasket: TPE / Lid: ASA |
| Max. dimensions: | 77.3mm x 66.5mm (after mounting) |
| Weight: | 143 g 'weight counted with cable above' |
| Colour: | Black (for different colours please ask our sales team) |

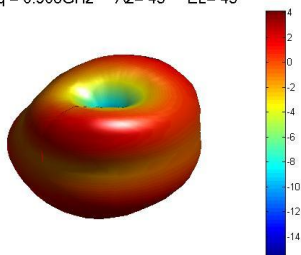


2. MEASUREMENT

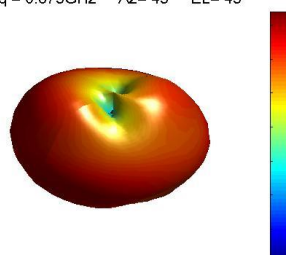
- Measured on 45 cm x 45 cm ground plane



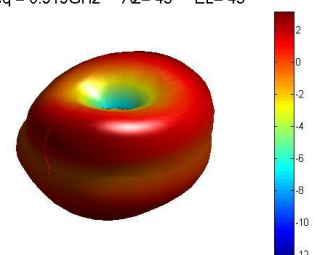
Freq = 0.908GHz Az= 45 EL= 45



Freq = 0.875GHz Az= 45 EL= 45



Freq = 0.919GHz Az= 45 EL= 45



3. IMAGES

