



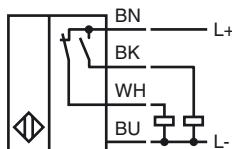
Model Number

NJ6-F-A2

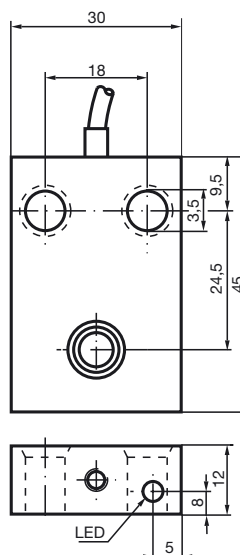
Features

- Comfort series
- 6 mm embeddable
- 4-wire DC

Connection



Dimensions



Technical Data

General specifications			
Switching element function		PNP	NO/NC
Rated operating distance	s_n	6 mm	
Installation		embeddable	
Output polarity		DC	
Assured operating distance	s_a	0 ... 4.8 mm	
Reduction factor r_{Al}		0.22	
Reduction factor r_{Cu}		0.2	
Reduction factor r_{304}		0.7	
Nominal ratings			
Operating voltage	U_B	10 ... 60 V DC	
Switching frequency	f	0 ... 500 Hz	
Hysteresis	H	0 ... 0.3 typ. 0.1 %	
Reverse polarity protected		reverse polarity protected	
Short-circuit protection		pulsing	
Voltage drop	U_d	≤ 3 V	
Operating current	I_L	0 ... 200 mA	
No-load supply current	I_0	≤ 20 mA	
Indication of the switching state		LED, yellow	
Functional safety related parameters			
MTTF _d		690 a	
Mission Time (T _M)		20 a	
Diagnostic Coverage (DC)		0 %	
Ambient conditions			
Ambient temperature		-25 ... 70 °C (-13 ... 158 °F)	
Mechanical specifications			
Connection type		cable PUR , 2 m	
Core cross-section		0.34 mm ²	
Housing material		PBT	
Sensing face		PBT	
Protection degree		IP67	
Compliance with standards and directives			
Standard conformity			
Standards		EN 60947-5-2:2007 IEC 60947-5-2:2007	
Approvals and certificates			
UL approval		cULus Listed, General Purpose	
CSA approval		cCSAus Listed, General Purpose	
CCC approval		Certified by China Compulsory Certification (CCC)	

Release date: 2011-05-12 11:14 Date of issue: 2012-02-03 024692_eng.xml